

Table with columns: PART NUMBER, REVISION, DESCRIPTION, FEED TYPE, CONVERT TO, PART NUMBERS REQUIRED. Includes sub-table 'APPLICATOR STYLE CONVERSION CHART'.

Table: APPLICATOR DATA. Columns: CRIMP, SIZE, TYPE. Values: WIRE 2.03 mm [.080] F, INSUL 2.55 mm [.100] OV.

Table: TERMINAL DATA: TE TERMINAL TE CRIMP SPECIFICATION. Includes terminals applied table with columns: TE TERMINAL, (A), (B), (C).

Table: TERMINAL DATA: TE TERMINAL TE CRIMP SPECIFICATION. Includes terminals applied table with columns: TE TERMINAL, (C).

Table: WIRE SIZE, CRIMP HEIGHT mm [INCH], CRIMP HEIGHT REFERENCE SETTING. Values for 1.00mm2, 0.75mm2, 0.50mm2.

Table: WIRE SIZE, CRIMP HEIGHT mm [INCH], CRIMP HEIGHT REFERENCE SETTING. Values for 1.00mm2, 0.75mm2, 0.50mm2.

- 1. RECOMMENDED SPARE PARTS
2. GREASE BEARING SURFACES LIGHTLY
3. LUBRICATE DAILY PER THE APPLICATOR INSTRUCTION SHEET SUPPLIED WITH THE APPLICATOR.
4. APPLICATOR SPECIFIC DATA TO BE ENTERED INTO BLANK MEMORY CHIP AT ASSEMBLY...

*WARNING ON INSTALLATION, SET WIRE DISC, ITEM 40 TO LARGEST WIRE SIZE SETTING. USE OF SETTINGS BELOW MINIMUM REQUIRED CRIMP HEIGHT SETTING WILL CAUSE DAMAGE TO CRIMP TOOLING.

Table: WIRE SIZE, CRIMP HEIGHT mm [INCH], CRIMP HEIGHT REFERENCE SETTING. Values for 0.50 + 0.50mm2, 0.50 + 0.35mm2.

Table with columns: PART NO, DESCRIPTION, ITEM NO. Lists parts like 2119957-2 APPLICATOR SHIM PACK (260), 8-21084-0 O-RING (252).

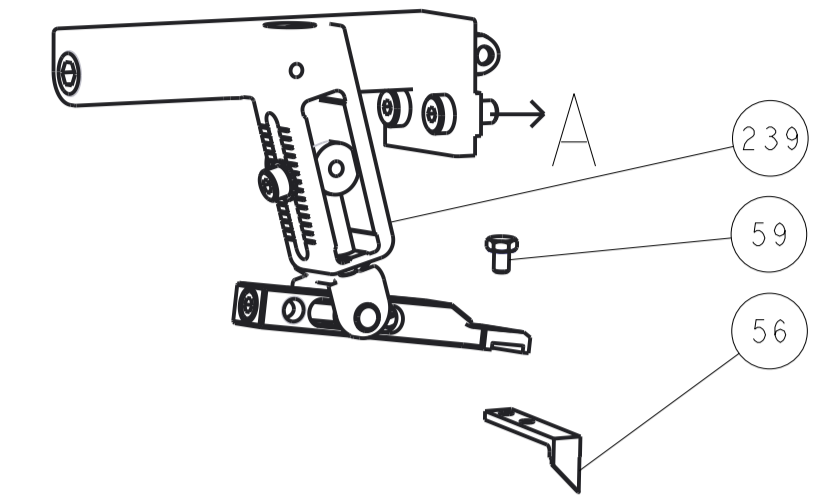
ATLANTIC VERSION Shown on sheets 1 of 4 & 2 of 4 (Pacific version shown on sheets 3 of 4 & 4 of 4)

Large table listing parts with columns: PART NO, DESCRIPTION, DATE, QTY, UNIT, APVD. Includes part list from 1-22279-3 to 1803125-2.

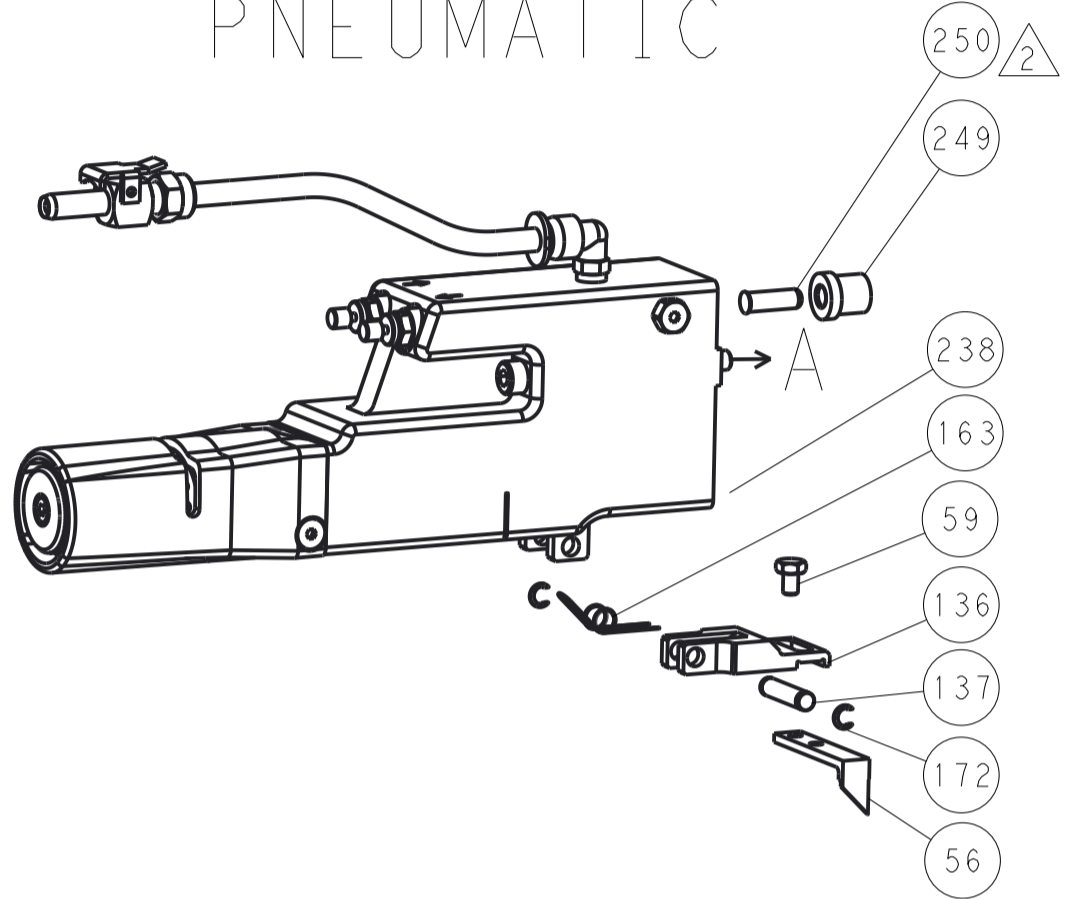
Technical drawing information including dimensions, tolerances, material, and drawing title 'Ocean Side Feed Applicator'.

LOC		DIST		REVISIONS			
A	66	P	LTM	DESCRIPTION	DATE	DWN	APVD
		-		SEE SHEET 1			

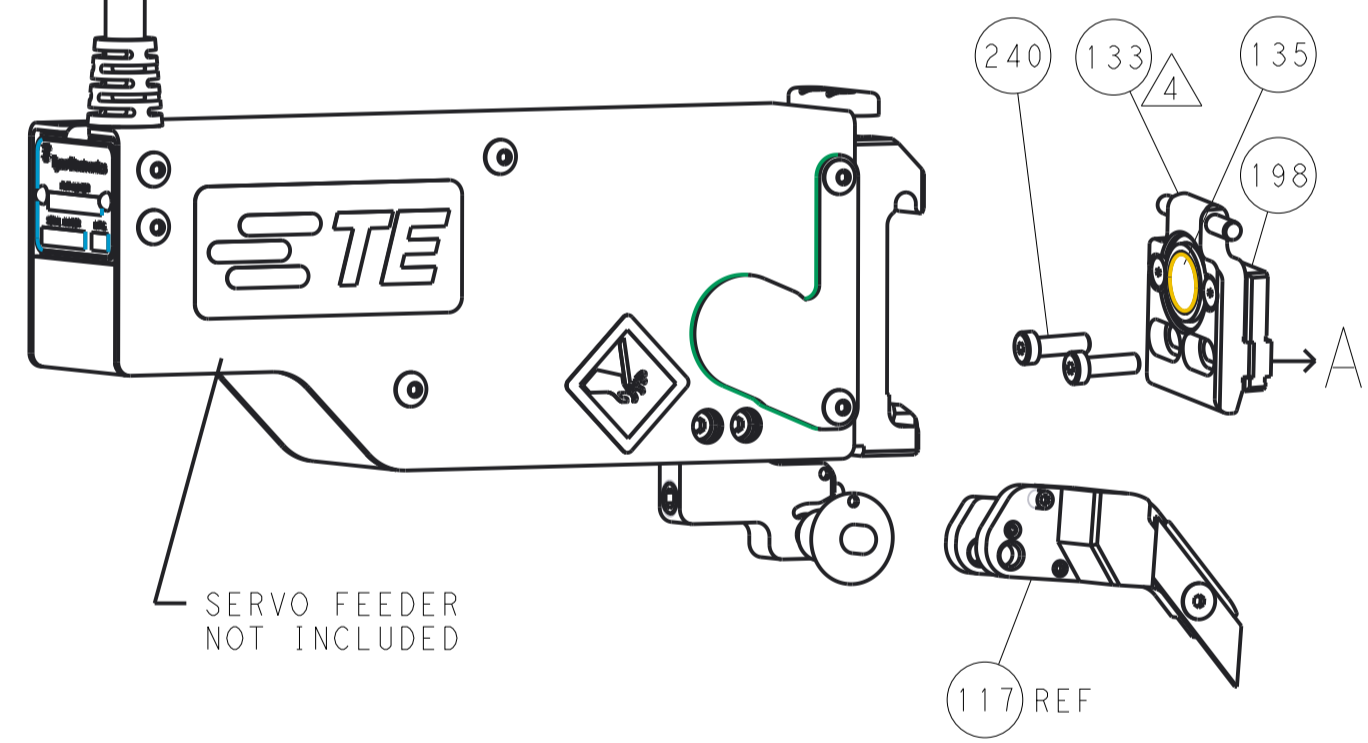
FEED TYPE MECHANICAL



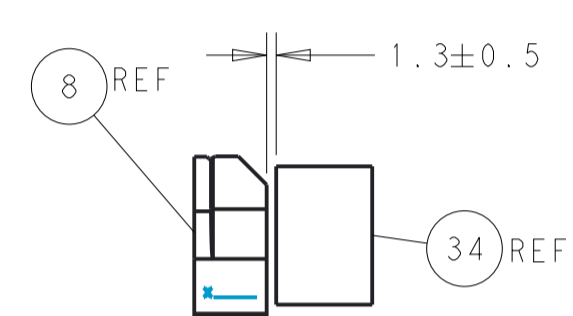
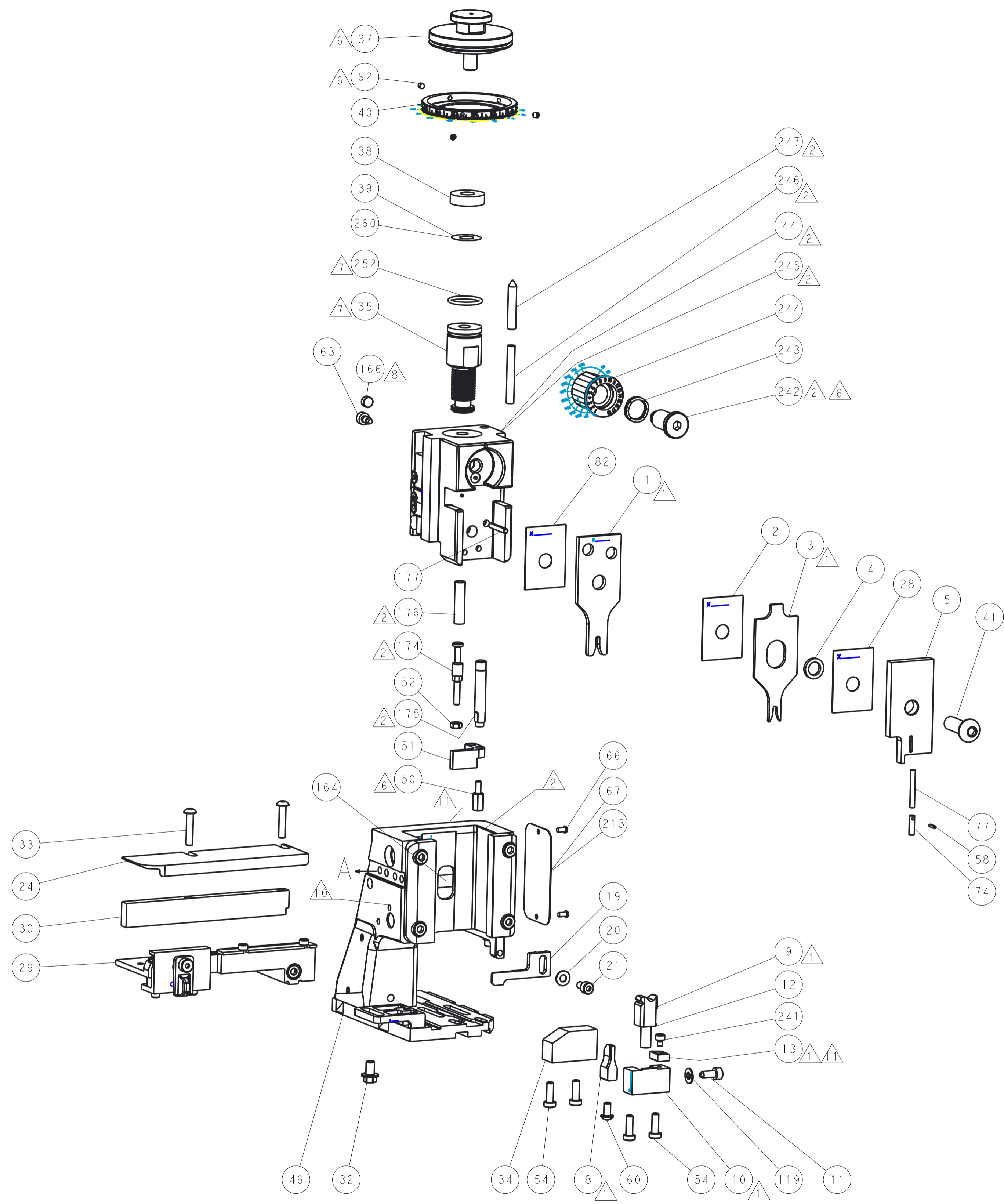
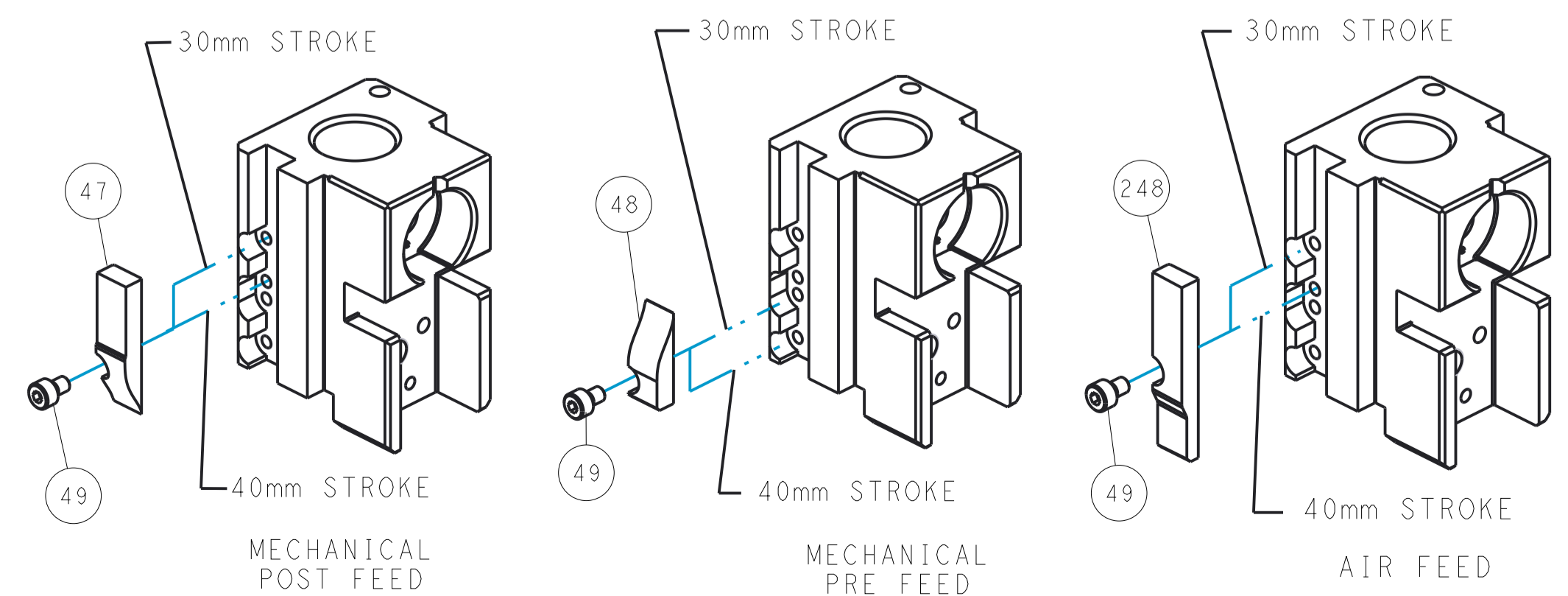
PNEUMATIC



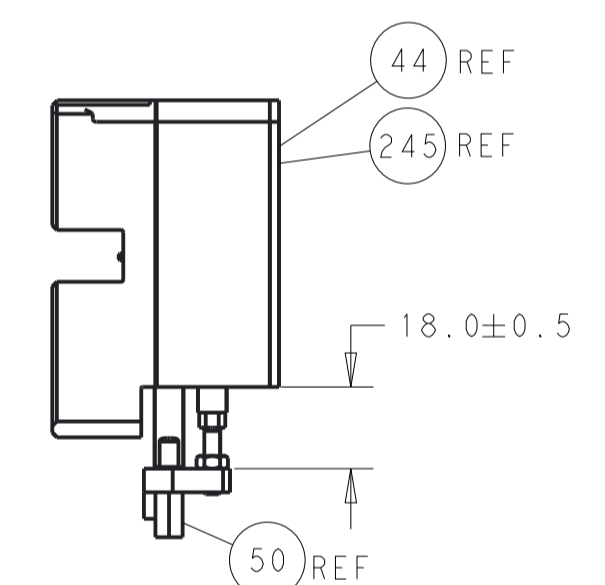
SERVO LATCH PLATE



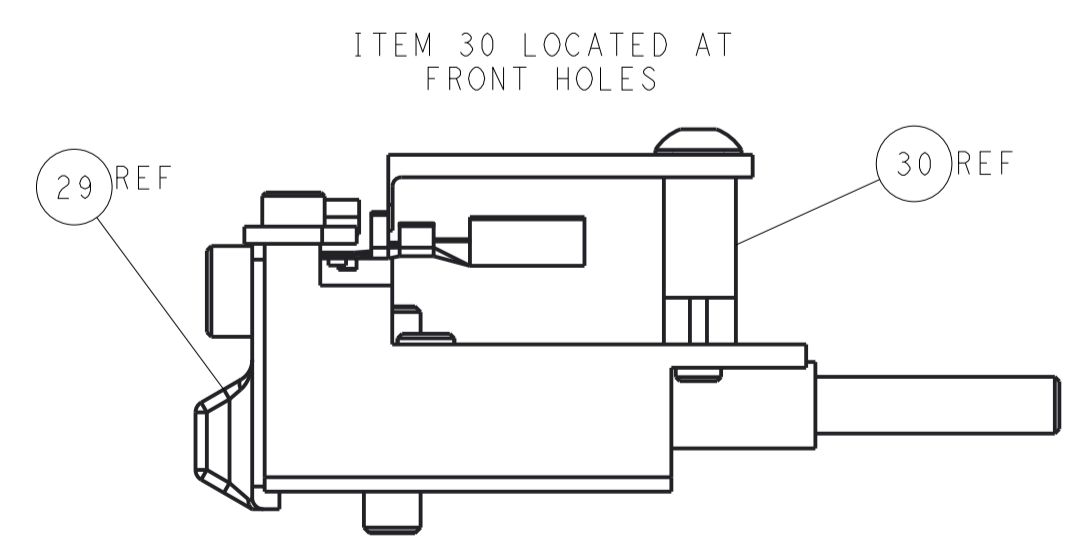
CAM POSITIONS



TERMINAL SUPPORT LOCATION



HOLDDOWN SET-UP



FEED TRACK POSITION GUIDE BY INSULATION BARREL

ATLANTIC VERSION
 Shown on sheets 1 of 4 & 2 of 4
 (Pacific version shown on sheets 3 of 4 & 4 of 4)

DIMENSIONS:		TOLERANCES UNLESS OTHERWISE SPECIFIED:		DWN Y. YIN 22AUG2011		TE Connectivity	
mm	0 PLC ±0.5	1 PLC ±0.5	2 PLC ±0.13	3 PLC ±0.013	4 PLC ±0.0013	5 PLC ±0.0013	Harrisburg, PA 17105-3608
MATERIAL:		FINISH:		CHK G. BAILEY 22AUG2011		NAME	
				S. XI 22AUG2011		Ocean Side Feed Applicator	
				APVD		PRODUCT SPEC	
				APVD		APPLICATION SPEC	
				WEIGHT		SIZE CAGE CODE DRAWING NO	
				A1 00779		©=2151099	
				Customer Accessible Production Drawing		SCALE 1:2 SHEET 2 OF 4 REV K3	

APPLICATOR STYLE CONVERSION CHART. Table with columns: CONVERT TO (PNEUMATIC FEED, SERVO LATCH PLATE, SMART APPLICATOR, MECHANICAL FEED, SERVO LATCH PLATE, SMART APPLICATOR), PART NUMBERS REQUIRED (2119950-1, 1338685-1, 5-18022-5, 2119641-2, 2119799-1, 2063440-1, etc.), FEED TYPE (MECHANICAL, PNEUMATIC, SERVO LATCH PLATE, NONE).

APPLICATOR DATA. Table with columns: CRIMP (WIRE, INSUL), SIZE (2.03 mm, 2.55 mm), TYPE (F, OV). APPLICATOR INSTRUCTIONS 408-10389.

TERMINAL DATA: TE TERMINAL TE CRIMP SPECIFICATION. TERMINAL NAME: JUNIOR-POWER-TIMER CONTACT. WIRE STRIP LENGTH 3.70-4.30 mm. INSULATION DIAMETER RANGE 1.40-2.10 mm. TERMINAL APPLICATION SPECIFICATION (A) 114-18050, (B) 114-18051. TERMINALS APPLIED table.

TERMINAL DATA: TE TERMINAL TE CRIMP SPECIFICATION. TERMINAL NAME: JUNIOR-POWER-TIMER CONTACT. WIRE STRIP LENGTH 3.50-4.10mm. INSULATION DIAMETER RANGE 1.40-2.10 mm. TERMINAL APPLICATION SPECIFICATION (C) 114-18387. TERMINALS APPLIED table.

WIRE SIZE vs CRIMP HEIGHT REFERENCE SETTING. Table with columns: WIRE SIZE (1.00mm2, 0.75mm2, 0.50mm2), CRIMP HEIGHT mm [INCH], CRIMP HEIGHT REFERENCE SETTING (5.5, 5.7, 5.8).

WIRE SIZE vs CRIMP HEIGHT REFERENCE SETTING. Table with columns: WIRE SIZE (1.00mm2, 0.75mm2, 0.50mm2), CRIMP HEIGHT mm [INCH], CRIMP HEIGHT REFERENCE SETTING (5.5, 5.7, 5.8).

- RECOMMENDED SPARE PARTS
GREASE BEARING SURFACES LIGHTLY
LUBRICATE DAILY PER THE APPLICATOR INSTRUCTION SHEET SUPPLIED WITH THE APPLICATOR.
APPLICATOR SPECIFIC DATA TO BE ENTERED INTO BLANK MEMORY CHIP AT ASSEMBLY. SEE BELOW FOR PART NUMBER: MECHANICAL FEED WITH "SMART APPLICATOR" CONVERSION: 8-2151099-4 PNEUMATIC FEED WITH "SMART APPLICATOR" CONVERSION: 8-2151099-4 SERVO FEED WITH "FINE CRIMP HEIGHT ADJUST": 8-2151099-5
ADJUSTMENT OF THE STRIPPER MAY BE REQUIRED WHEN MOVING THE APPLICATOR BETWEEN BENCH AND LEADMAKER APPLICATIONS.
APPLY PART NUMBER 1-23419-5 LOCTITE TO THREADS OF ITEM 50 & 62. APPLY PART NUMBER 2-23419-6 LOCTITE TO THREADS OF ITEM 242.
GREASE THREADS, GROOVE AND O-RING ON ITEMS 139 & 152.
MAGNET MUST BE ORIENTED CORRECTLY IN ORDER TO PROPERLY ACTUATE THE COUNTER.
CRIMP HEIGHT REFERENCE SETTING WAS THE SETTING USED WHEN THE APPLICATOR WAS QUALIFIED AT THE FACTORY. ADJUSTMENT MAY BE NECESSARY WHEN RUNNING APPLICATOR IN THE FIELD.
SPARE FEED CAM STORAGE LOCATION REFER TO INSTRUCTION SHEET FOR ADDITIONAL INFORMATION.
TO CONVERT THE APPLICATOR TO A NON-CARRIER CUTTING STYLE, REMOVE ITEM 13 AND ATTACH TO THE LOCATION ON BACK SIDE OF THE HOUSING. REFER TO INSTRUCTION SHEET FOR ADDITIONAL INFORMATION.

*WARNING ON INSTALLATION, SET WIRE DISC, ITEM 40 TO LARGEST WIRE SIZE SETTING. USE OF SETTINGS BELOW MINIMUM REQUIRED CRIMP HEIGHT SETTING WILL CAUSE DAMAGE TO CRIMP TOOLING.

THIS CRIMP PARAMETER IS PROVIDED TO MEET A CUSTOM AND UNIQUE CUSTOMER REQUIREMENT. IT HAS BEEN EVALUATED AND IS CONDITIONALLY SPECIFIED BY TE CONNECTIVITY. THIS CUSTOMIZED CRIMP PARAMETER IS NOT LISTED AS AN APPROVED APPLICATION WITHIN A TE CONNECTIVITY APPLICATION SPECIFICATION; HOWEVER, IT HAS BEEN VALIDATED ACCORDING TO TE CONNECTIVITY SPECIFICATIONS 109-18079 (TEST GROUP 1) AND 114-18022. TE CONNECTIVITY EXPRESSLY DISCLAIMS ANY AND ALL WARRANTIES THAT THE PRODUCT WILL PERFORM SIMILARLY TO VALIDATED AND APPROVED APPLICATIONS, AS STATED WITHIN TE CONNECTIVITY APPLICATION SPECIFICATIONS, INCLUDING BUT NOT LIMITED TO IMPLIED WARRANTIES OF MERCHANTABILITY OR FITNESS FOR PARTICULAR PURPOSE. AS SUCH, IT IS HIGHLY RECOMMENDED THAT THE CUSTOMER PERFORM FURTHER DETAILED EVALUATION TO ASSESS PRODUCT PERFORMANCE IN THE SPECIFIC APPLICATION.

Table with columns: -77 -27 -25 -22 -21 PART NO, DESCRIPTION (FINE ADJUST HEAD ASM, PACIFIC STYLE; PUSH ROD, AIR FEED; BUSHING, LCH5-12, MISUMI; SPRING, COMPRESSION), ITEM NO (251, 250, 249, 246).

PACIFIC VERSION Shown on sheets 3 of 4 & 4 of 4 (Atlantic version shown on sheets 1 of 4 & 2 of 4)

SET UP GAUGE 2119599-1, LOC A, DIST 66. REVISIONS table with columns: P, LTM, DESCRIPTION, DATE, DWN, APVD.

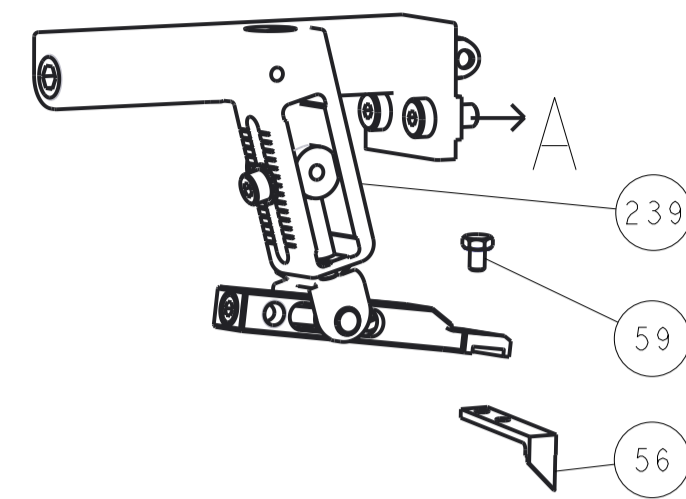
Main parts list table with columns: P, LTM, DESCRIPTION, DATE, DWN, APVD. Lists various components like CAM, SNAIL, INSULATION ADJUSTMENT; WASHER, WAVE SPRING, CREST-TO-CREST; RETAINER, INSULATION DIAL; etc.

TE Connectivity logo and product information: Ocean Side Feed Applicator, SIZE A1, CAGE CODE 00779, DRAWING NO C=2151099, SCALE 1:2, SHEET 3 OF 4, REV K3.

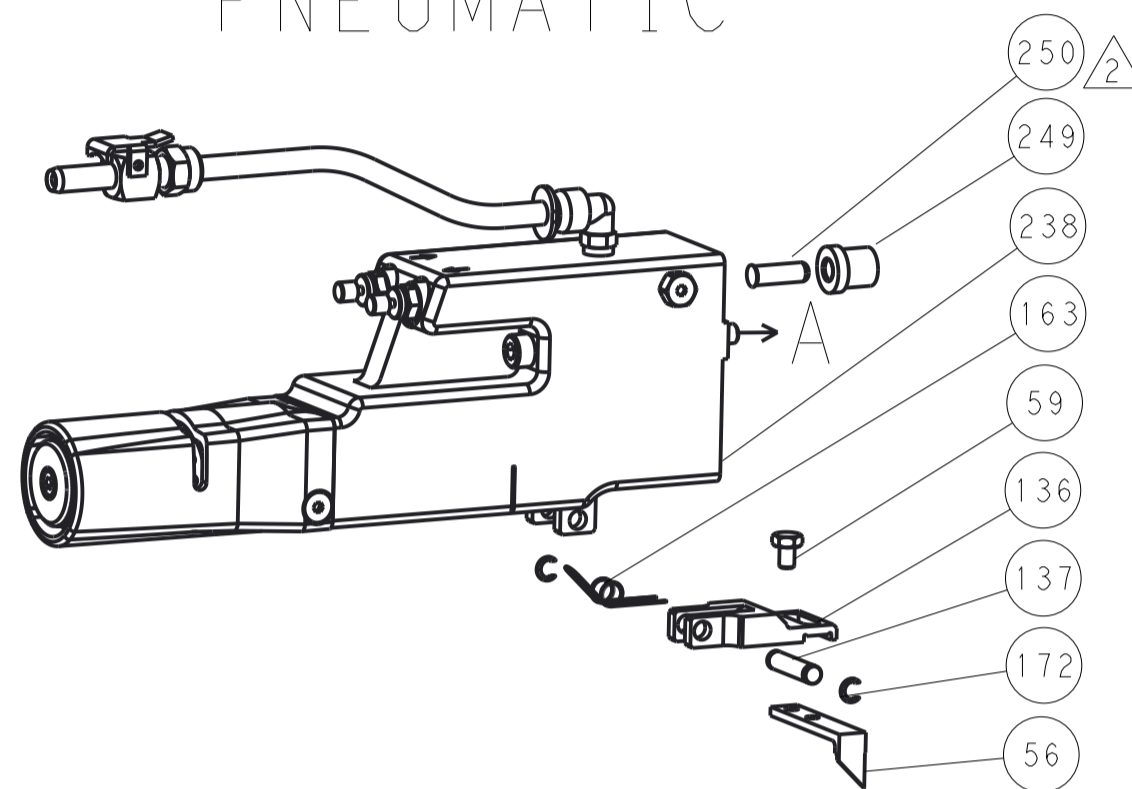
LOC		DIST		REVISIONS			
A	66	P	LTM	DESCRIPTION	DATE	OWN	APVD
		-	-	SEE SHEET 1	-	-	-

FEED TYPE

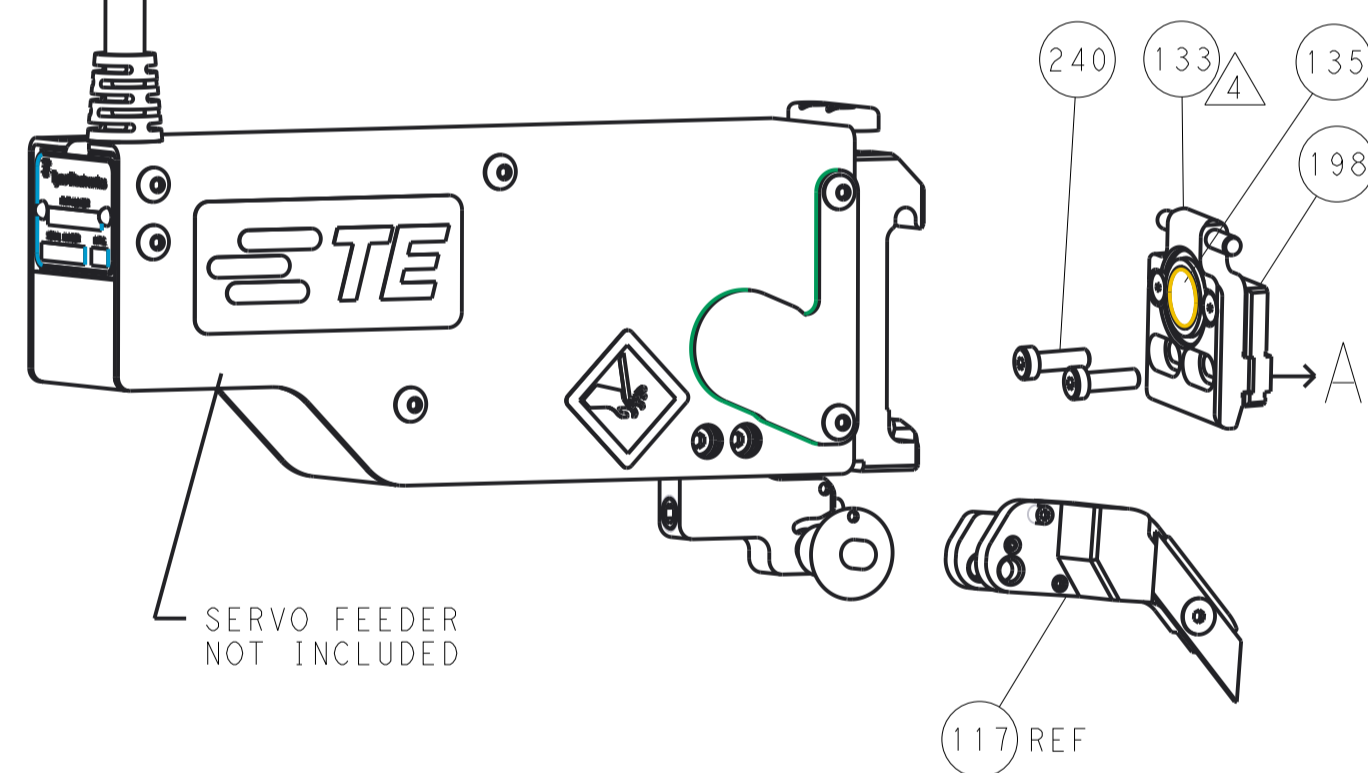
MECHANICAL



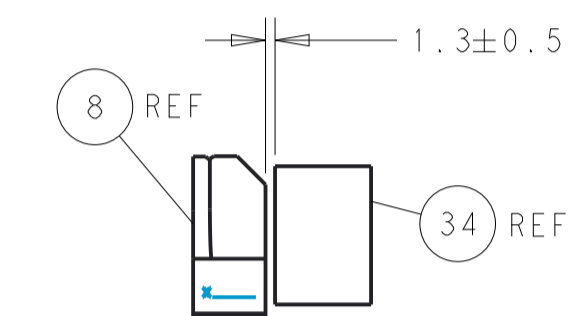
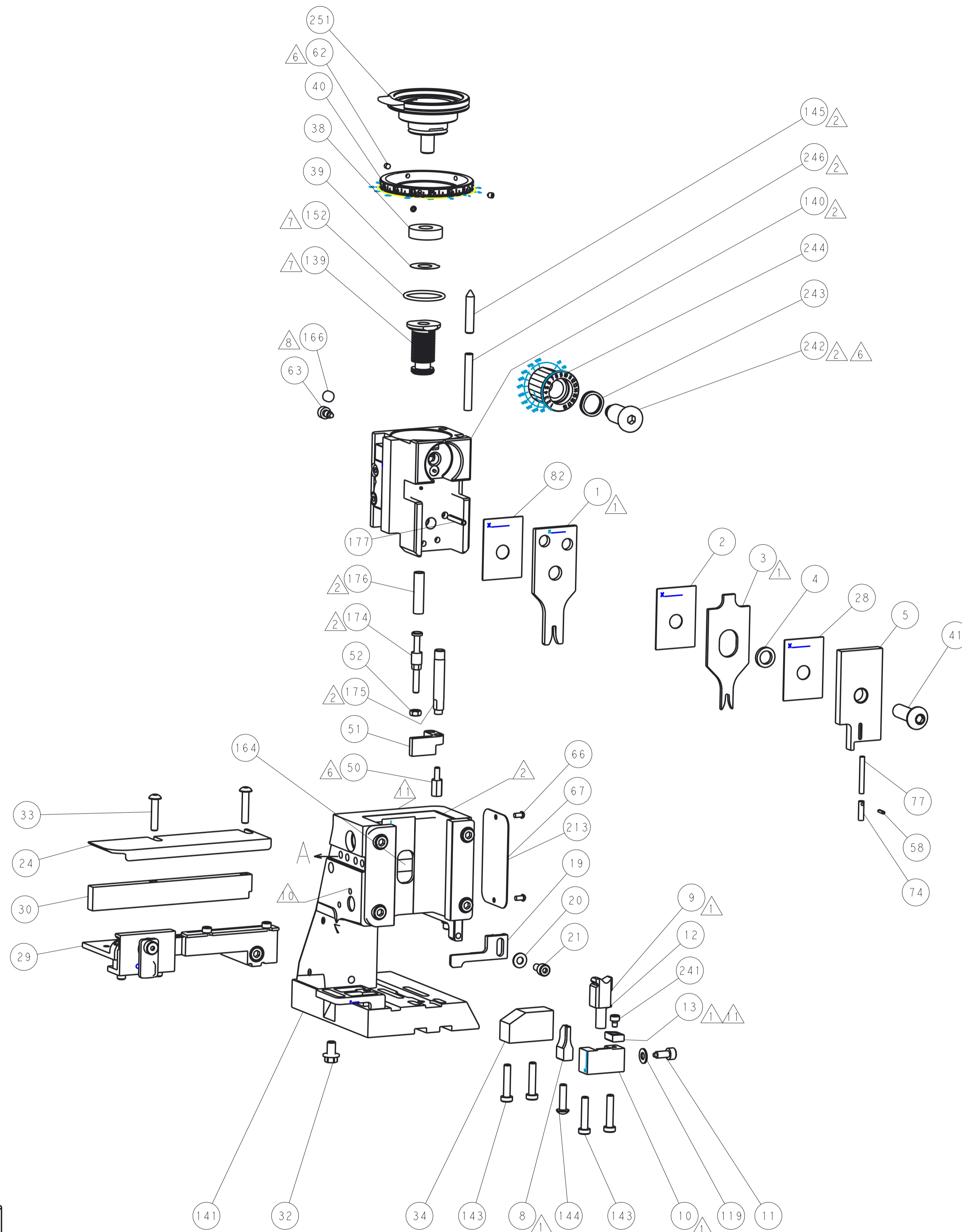
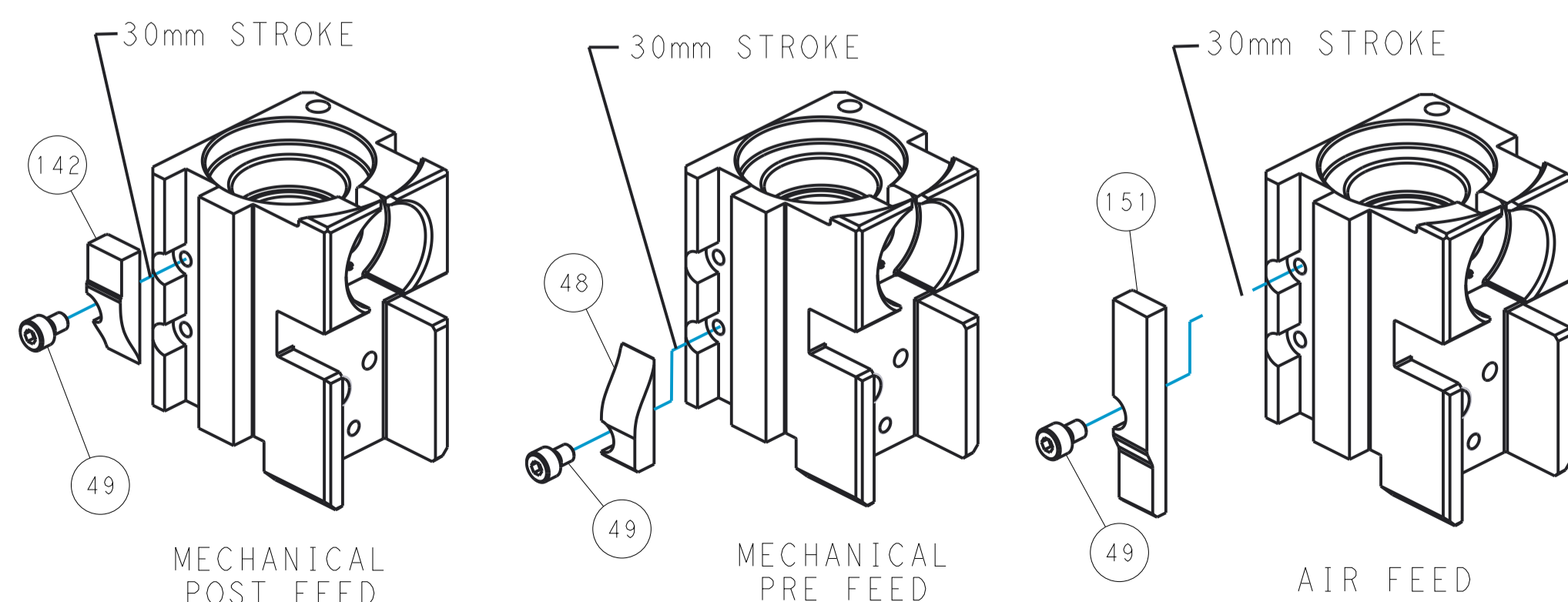
PNEUMATIC



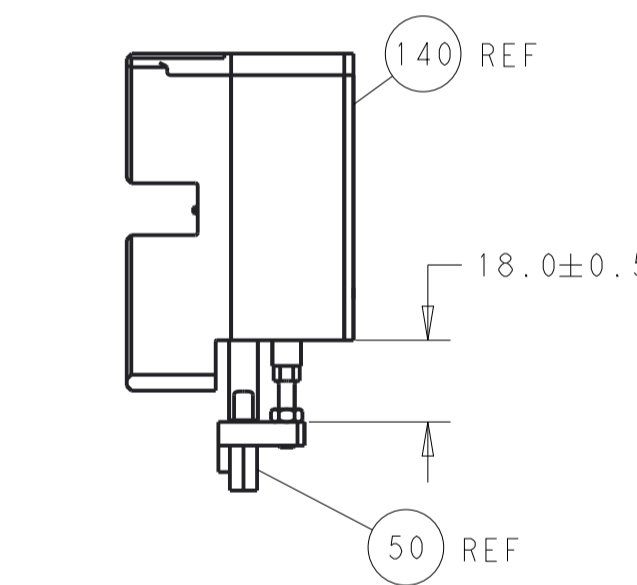
SERVO LATCH PLATE



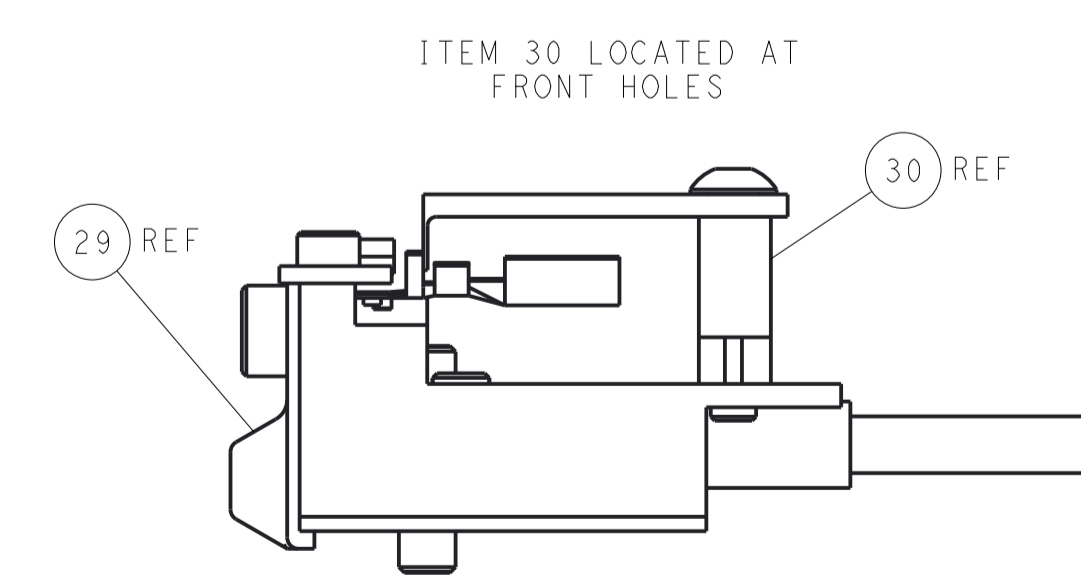
CAM POSITIONS



TERMINAL SUPPORT LOCATION



HOLDDOWN SET-UP



FEED TRACK POSITION GUIDE BY INSULATION BARREL

PACIFIC VERSION
 Shown on sheets 3 of 4 & 4 of 4
 (Atlantic version shown on sheets 1 of 4 & 2 of 4)

DIMENSIONS:		TOLERANCES UNLESS OTHERWISE SPECIFIED:		DWG: Y. YIN 22AUG2011		TE Connectivity	
mm	0 PLC ±0.5	1 PLC ±0.5	2 PLC ±0.13	3 PLC ±0.013	4 PLC ±0.001	APVD: S. XI 22AUG2011	Harrisburg, PA 17105-3608
MATERIAL:		FINISH:		NAME: Ocean Side Feed Applicator		RESTRICTED TO:	
-		-		SIZE: CAGE CODE: DRAWING NO: A1 00779 ©=2151099		-	
Customer Accessible Production Drawing		SCALE: 1:2		SHEET 4 OF 4		REV: K3	