

UNLESS OTHERWISE NOTED
 DIMENSIONS ARE IN INCHES
 TOLERANCES ARE:
 ONE PLACE DECIMALS ± .1
 TWO PLACE DECIMALS ± .01
 THREE PLACE DECIMALS ± .005
 FOUR PLACE DECIMALS ± .0020
 ANGLES
 ± 2°

TITLE: .050 X .050
 SOCKET STRIP
 DOUBLE ROW ASSEMBLY
 DWG NO: SFM-1XX-XX-XXX-D-XX
 SHEET 1 OF 3

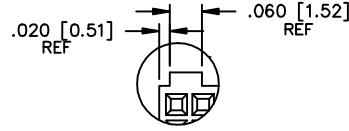
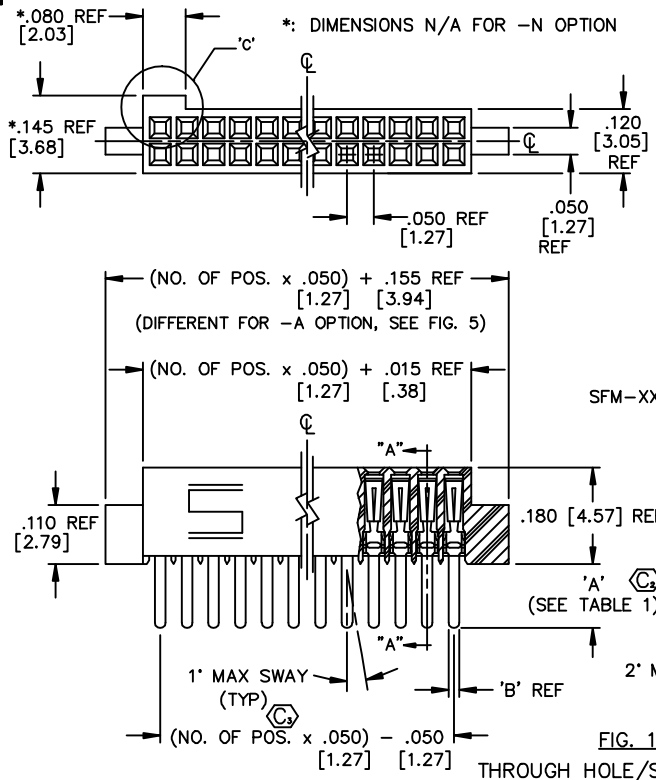


FIG. 1 THROUGH HOLE/STRAIGHT MODIFIED

SFM-1XX-XX-XXX-D-XXX

NO. OF POSITIONS
 ALL POSITIONS AVAILABLE
 -5 THRU -50
 USE BODY: (SFM-XX-D-XX-X)

LEAD STYLE

- 01: THROUGH HOLE
 USE CONTACT: (C-44-01-XXX)
 (SEE FIG. 1, SHT. 1)
- 02: SURFACE MOUNT
 USE CONTACT: (C-44-02-XXX)
 (SEE FIG. 2, SHT. 1)
- 03: STRAIGHT MODIFIED
 USE CONTACT: (C-44-03-XXX)
 (SEE FIG. 1, SHT. 1)
- L1: THROUGH HOLE (LOW INSERTION)
 USE CONTACT: (C-61-01-XXX)
 (SEE FIG. 1, SHT. 1)
- L2: SURFACE MOUNT (LOW INSERTION)
 USE CONTACT: (C-61-02-XXX)
 (SEE FIG. 2, SHT. 1)
- L3: STRAIGHT MODIFIED (LOW INSERTION)
 USE CONTACT: (C-61-03-XXX)
 (SEE FIG. 1, SHT. 1)
- T1: THROUGH HOLE (PHOS BRONZE)
 USE CONTACT: (C-119-01-XXX)
 (SEE FIG. 1, SHT. 1)
- T2: SURFACE MOUNT (PHOS BRONZE)
 USE CONTACT: (C-119-02-XXX)
 (SEE FIG. 2, SHT. 1)

OPTIONS
 (LEAVE BLANK FOR STANDARD AND USE SFM-XX-D)
 -N: NO POLARIZATION NOTCH
 (USE SFM-XX-D-XX-N)
 -A: ALIGNMENT PIN (USE SFM-XX-D-A-X)
 (SEE FIGURE 5, SHT. 2)
 -LC: LOCKING CLIP (SEE FIGURE 7)
 (USE (2) LC-05-TM & SFM-XX-D-LC-X)
 (AVAILABLE ON ALL LEADS)
 -P: PICK AND PLACE PAD
 (SEE FIG 6, SHT 2)
 -TR: TAPE & REEL
 (SEE FIG 4, SHT 3)
 -K: POLYIMIDE FILM PAD (.005 [0.13] THICKNESS WITH SILICONE ADHESIVE)
 (SEE FIG 3)
 (USE K-500-300)
 ** -SN: SOLDER NAIL FOR .062 BOARD
 (SFM-XX-D-SN AND WT-27-01-T)
 *** -SN2: SOLDER NAIL FOR .093 BOARD
 (SFM-XX-D-SN AND WT-27-02-T)

BODY SPECIFICATION
 -D: DOUBLE ROW

PLATING SPECIFICATION

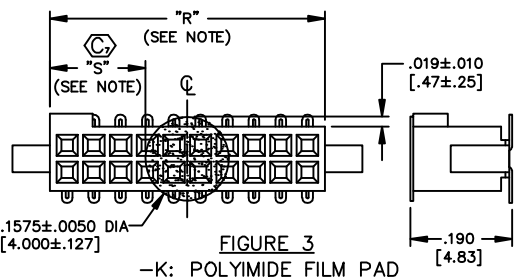
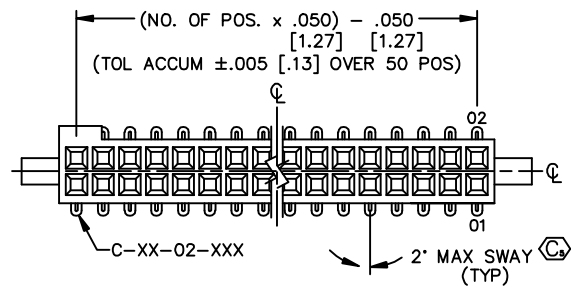
- S: SELECTIVE - SPECIFY -S IN PLATING SUFFIX -XXX
- P: GOLD FLASHED PALLADIUM NICKEL - SPECIFY -P IN PLATING SUFFIX -XXX
- F: FLASH SELECTIVE GOLD - SPECIFY -F IN PLATING SUFFIX -XXX
- H: HEAVY GOLD - SPECIFY -H IN PLATING SUFFIX -XXX
- L: SELECTIVE LIGHT GOLD - SPECIFY -L IN PLATING SUFFIX -XXX
- STL: SELECTIVE GOLD/TIN-LEAD TAIL SPECIFY -STL IN PLATING SUFFIX -XXX (ONLY AVAILABLE ON -02 OR -L2 LEADSTYLES)
- SM: SELECTIVE GOLD/MATTE TIN TAIL SPECIFY -S IN SUFFIX -XXX
- LM: LIGHT SELECTIVE GOLD/MATTE TIN TAIL SPECIFY -L IN PLATING SUFFIX -XXX
- FM: FLASH SELECTIVE GOLD/MATTE TIN TAIL SPECIFY -F IN PLATING SUFFIX -XXX

TABLE 1

SUFFIX	TAIL LENGTH "A"	TAIL WIDTH "B"
-X1	.120 [3.05]	.020 [.51]
-X3	.075 [1.91]	.016 [.41]

* = NOT RELEASED

DIFFERENT AS SHOWN OTHERWISE SAME AS FIG. 1



- NOTES:
- MIN. PUSHOUT FORCE: 5 lb.
 - COPLANARITY: .004=POS 05 THRU 26
.006=POS 27 THRU 50
 - Ⓢ REPRESENTS CRITICAL DIMENSION
 - TUBE ALL POSITIONS. PARTS TO BE TUBED WITH NOTCH GOING WITH THE ARROW.
 - PINS CAN BE ORIENTED IN ANY DIRECTION; BOTH ROWS MUST FACE SAME WAY.
 - SEE NOTCH FOR PROPER ORIENTATION.
 - .003 [.08] MAXIMUM PIN HEIGHT VARIATION BETWEEN ANY TWO PINS.

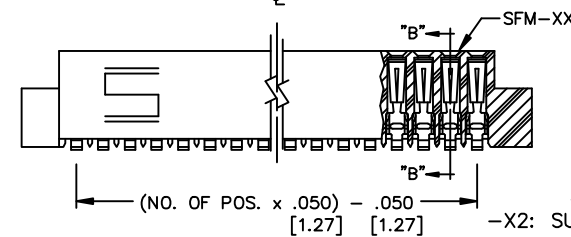


FIG. 2 -X2: SURFACE MOUNT

MATERIAL:
 INSULATOR:
 BLACK LIQUID
 CRYSTAL POLYMER
 CONTACT MATERIAL:
 TIGER EYE =BeCu
 TIGER EYE LITE =
 PHOSPHOR BRONZE

EXISPROD\ASSEMBLY\050
 SFM-ASM1

samtec

520 PARK EAST BLVD. NEW ALBANY, INDIANA 47150
 PHONE (812) 944-6733 P.O. BOX 1147
 CODE 55322

MADE BY: JORDAN 12/11/89

SFM-1XX-XX-XXX-D-XX
 SHEET 1 OF 3

PROPRIETARY NOTE
 THIS DOCUMENT CONTAINS INFORMATION CONFIDENTIAL AND PROPRIETARY TO SAMTEC INC. AND SHALL NOT BE REPRODUCED OR TRANSMITTED TO OTHERS OR USED FOR ANY PURPOSE OTHER THAN THAT FOR WHICH IT WAS OBTAINED WITHOUT THE EXPRESSED WRITTEN CONSENT OF SAMTEC INC.