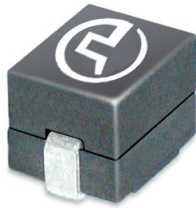


# SMT POWER INDUCTORS

Power Beads - PA4060.XXXHL



- ⊕ **Current Rating:** Over 90Apk
- ⊕ **Inductance Range:** 115nH to 300nH
- ⊕ **Height:** 7.5mm Max
- ⊕ **Footprint:** 10.4mm x 8.0mm Max
- ⊕ **Halogen Free**

## Electrical Specifications @ 25°C — Operating Temperature -40°C to +130°C <sup>7</sup>

Part Number	Inductance <sup>1</sup> @ 0A <sub>DC</sub> (nH +/- 15%)	Inductance @I <sub>rated</sub> (nH TYP)	I <sub>rated</sub> <sup>2</sup> (A <sub>DC</sub> )	DCR <sup>3</sup> (mΩ nominal)	Saturation Current <sup>4</sup> (A TYP)			Heating Current (A TYP)
					25°C	100°C	125°C	
PA4060.121HL	115	115	41	0.29 +/- 5%	94	91	79	41
PA4060.151HL	150	150	41		76	63	59.5	
PA4060.171HL	175	175	41		67	53	48.5	
PA4060.231HL	238	220	38.5		48	38.5	36	
PA4060.271HL	270	250	32.5		41	32.5	30.5	
PA4060.301HL	305	290	27		35	27	26	

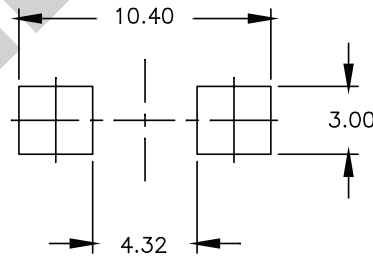
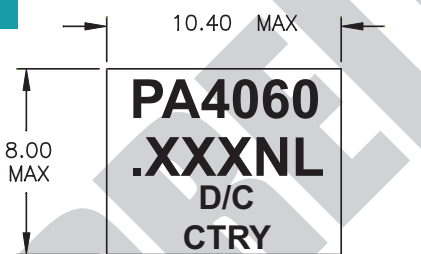
### NOTES:

- Inductance measured at 100kHz, 100mVrms.
- The rated current as listed is either the saturation current at 100°C or the heating current depending on which value is lower.
- The nominal DCR is measured from point (a) to point (b), as shown below on the mechanical drawing.
- The saturation current is the typical current which causes the inductance to drop by 20% at the stated ambient temperatures (25°C, 100°C and 125°C). This current is determined by placing the component in the specified ambient environment and applying a short duration pulse current (to eliminate self-heating effects) to the component.
- The heating current is the DC current which causes the part temperature to increase by approximately 40°C.
- In high volt\*time applications, additional heating in the component can occur due to core losses in the inductor which may necessitate derating the current in order to limit the temperature rise of the component. To determine the approximate total losses (or temperature rise) for a given application, the coreloss and temperature rise curves can be used.
- Optional Tape & Reel packaging can be ordered by adding a "T" suffix to the part number (i.e. PA4060.151HL becomes PA4060.151HLT). Pulse complies to industry standard tape and reel specification EIA481. The tape and reel for this product has a width (W=24mm), pitch (Po=12.0mm) and depth (Ko=8.4mm).
- The temperature of the component (ambient plus temperature rise) must be within the stated operating temperature range.

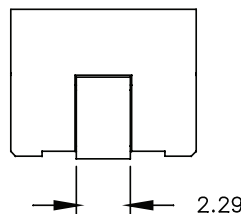
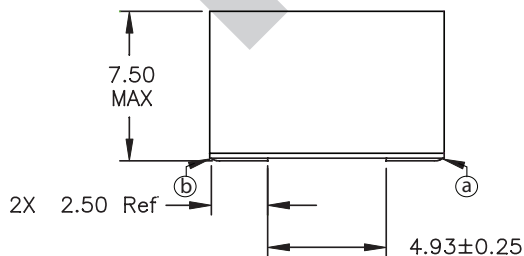
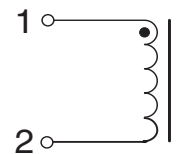
### Mechanical

### Schematic

PA4060.XXXHL



SUGGESTED LAND PATTERN



Weight . . . . . 2.4 grams  
Tape & Reel . . . . . 450/reel

Dimensions: mm

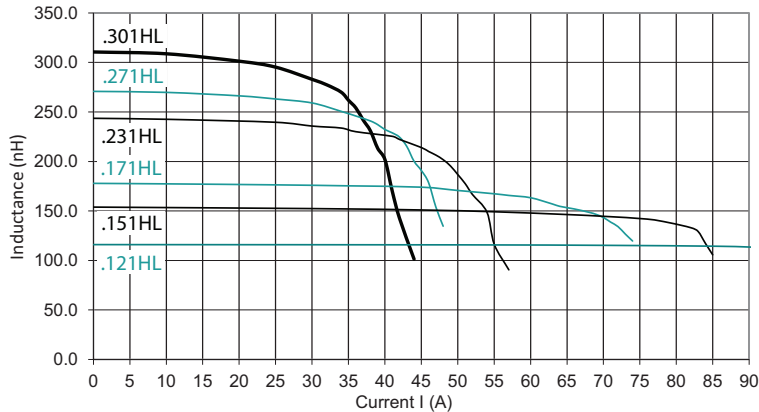
Unless otherwise specified,  
all tolerances are ± 0,25

# SMT POWER INDUCTORS

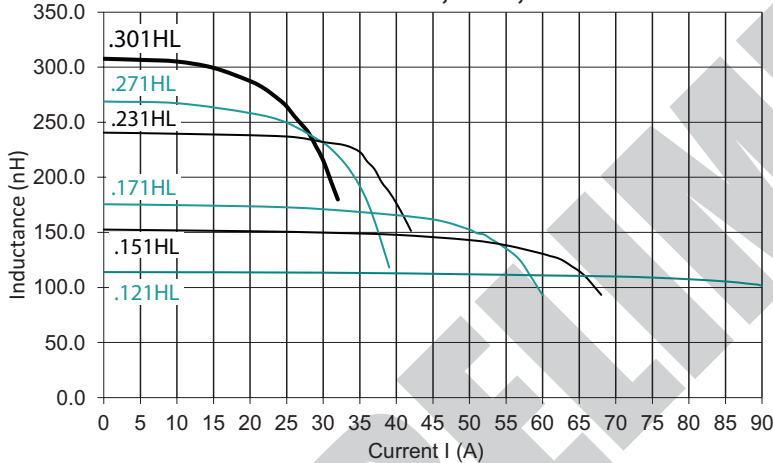
Power Beads - PA4060.XXXHL



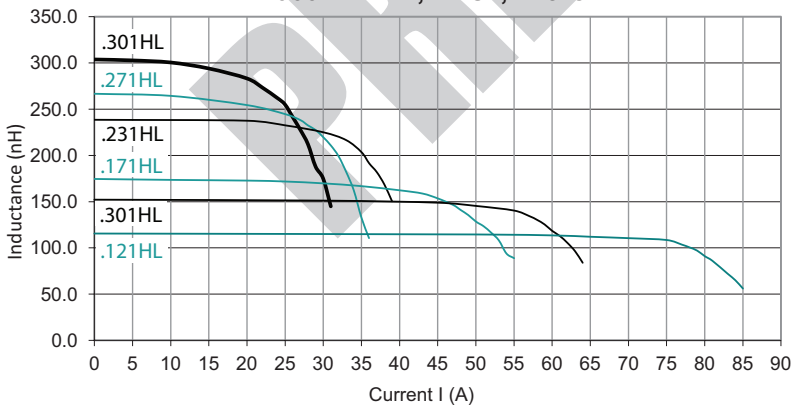
PA4060.XXXHL L vs I curve 25°C



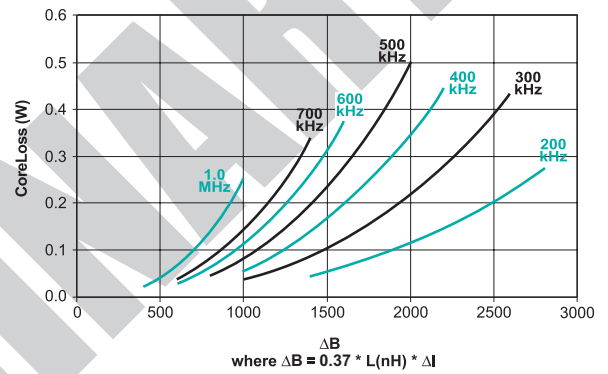
PA4060.XXXHL, LvsI, 100°C



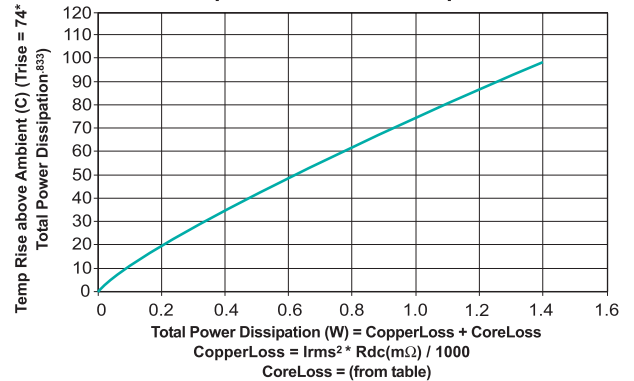
PA4060.XXXHL, L vs I, 125°C



CoreLoss (W)



Temp Rise vs Power Dissipation



**Pulse Worldwide Headquarters**  
12220 World Trade Drive  
San Diego, CA 92128  
U.S.A.

Tel: 858 674 8100  
Fax: 858 674 8262

**Pulse Europe**  
Einsteinstrasse 1  
D-71083 Herrenberg  
Germany

Tel: 49 7032 7806 0  
Fax: 49 7032 7806 135

**Pulse China Headquarters**  
B402, Shenzhen Academy of  
Aerospace Technology Bldg.  
10th Kejinan Road  
High-Tech Zone  
Nanshan District  
Shenzhen, PR China 518057

Tel: 86 755 33966678  
Fax: 86 755 33966700

**Pulse North China**  
Room 2704/2705  
Super Ocean Finance Ctr.  
2067 Yan An Road West  
Shanghai 200336  
China

Tel: 86 21 62787060  
Fax: 86 2162786973

**Pulse South Asia**  
135 Joo Seng Road  
#03-02  
PM Industrial Bldg.  
Singapore 368363

Tel: 65 6287 8998  
Fax: 65 6287 8998

**Pulse North Asia**  
3F, No. 198  
Zhongyuan Road  
Zhongli City  
Taoyuan County 320  
Taiwan R. O. C.  
Tel: 886 3 4356768  
Fax: 886 3 4356823 (Pulse)  
Fax: 886 3 4356820 (FRE)

Performance warranty of products offered on this data sheet is limited to the parameters specified. Data is subject to change without notice. Other brand and product names mentioned herein may be trademarks or registered trademarks of their respective owners. © Copyright, 2014. Pulse Electronics, Inc. All rights reserved.