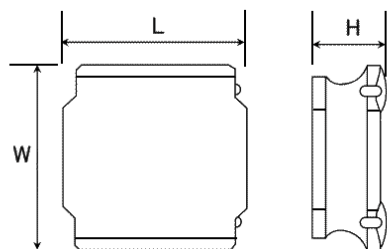


# Spec Sheet

SMD Power Inductors for Automotive / Industrial Applications (NR series H type / V type / S type)

## NRH3012T1R0NNV



### Features

- Item Summary  
1.0  $\mu$ H( $\pm 30\%$ ), 2200mA, 1710mA
- Lifecycle Stage  
Mass Production
- AEC-Q200 qualified
- Standard packaging quantity (minimum)  
Taping 2000pcs

### Products characteristics table

CaseSize (EIA/JIS)	~/3030
Inductance	1.0 $\mu$ H( $\pm 30\%$ )
Inductance Measuring Frequency	100kHz
Rated Current -Saturation Current	2200mA
Rated Current -Temperature Rise Current	1710mA
DC Resistance (max)	0.0576 $\Omega$
Avg. of DC.Resistance	0.048 $\Omega$
Self-resonant Frequency (min)	111MHz
RoHS Compliance	Yes
Halogen Free	Yes
Soldering Method	Reflow

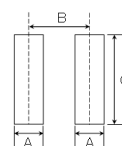
### External Dimensions

L	3mm $\pm 0.1$
W	3mm $\pm 0.1$
H	1.2mm max

### Recommended Land Patterns

【推奨ランドパターン】  
実装上の注意  
・実装状態を確認の上ご使用くださいようお願いいたします。  
・本製品のはんだ付けはリフローはんだ工法に限りま。

【Recommended Land Patterns】  
Surface Mounting  
・Mounting and soldering conditions should be checked beforehand.  
・Applicable soldering process to these products is reflow soldering only.



SMD Power Inductors (NR series/NR series H type/S type/V type)			
Type	A	B	C
NR 3010, NRH3010,			
NR 3012, NRH3012, NRV3012,	0.8	2.2	2.7
NR 3015, NPS3015			

unit:mm

2015.02.27

The data is reference only. Electrical characteristics vary depending on environment or measurement condition.  
TAIYO YUDEN reserves the right to make change to the Date at any time without notice.  
Before making final selection, please check product specification.