

TECHNICAL CHARACTERISTICS

SPECIFICATION

- >Rating: 500mA, 12VDC
- >Contact Resistance: 30mOHM max.
- >Insulation Resistance: >10,000MOHM at 500VDC
- >Dielectric Strength: 500VAC for 1 minute
- >Travel: 1,6mm
- >Operating force: 800g max.
- >Life cycle: 2000 steps
- >Switch function: ON-ON

MATERIAL

- >Cover: PA66 UL 94V-0, color blue
- >Slide: PA66 UL 94V-0, color red
- >Contact: Gold Plated
- >Terminal: Gold Plated

SOLDERING INFORMATION

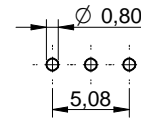
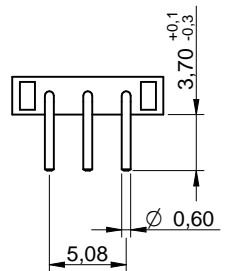
- >Terminal in THT version
- >Wave soldering 260°C 10 sec. max.

ENVIRONMENTAL

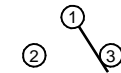
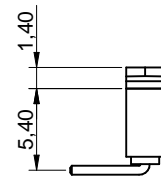
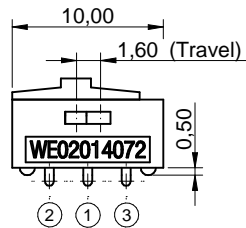
- >Storage condition: -40°C ~ +85°C
- >Operation condition: -40°C ~ +85°C
- >Compliance: ROHS, Reach

PACKAGING INFORMATION

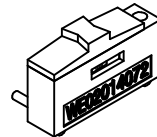
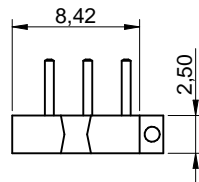
- >Bulk



P.C.B. MOUNTING PLAN



SCHEMATIC



Scale - 2:1

This electronic component is designed and developed with the intention for use in general electronics equipments.

Before incorporating the components into any equipments in the field such as aerospace, aviation, nuclear control, submarine, transportation, (automotive control, train control, ship control), transportation signal, disaster prevention, medical, public information network etc. where higher safety and reliability are especially required or if there is possibility of direct damage or injury to human body, Würth Elektronik must be asked for a written approval.

In addition, even electronic component in general electronic equipments, when used in electrical circuits that require high safety, reliability functions or performance, the sufficient reliability evaluation-check for the safety must be performed before by the user before usage.

		Projection		GENERAL TOLERANCE .x = +/- 0,2 .xx = +/- 0,15		Basic material	
				Date	Name	DESCRIPTION	
				Drawn	12-02-02	Jelisarow	
				Checked	12-02-02	Hsu	
						Scale	2:1
						Position	
						SIZE	
a	revised MatchCode	14-07-25	AL			Drawing.- No. 450302014072	
REV	FILE	DATE	BY	EDV NO 450302014072.dft		System :Solid Edge V6	
						A4	