

LOC	DIST	REVISIONS					
		P	LTR	DESCRIPTION	DATE	DWN	APVD
GP	00		A	RELEASED PER ECO-12-000076	17JAN2013	CJV	EDB

⚠ SURFACE TRACES PERMITTED WITHIN THIS AREA EXCEPT WHERE CAGE STANDOFFS, SHOWN IN DETAIL S, CONTACT PC BOARD.

⚠ PITCH BETWEEN PORTS OF ONE 1X3 CAGE ASSEMBLY.

⚠ SPACING BETWEEN CAGES ON THE SAME PC BOARD, TO BE SPECIFIED BY CUSTOMER, MUST COMPLY WITH MINIMUM DIMENSIONS SHOWN.

⚠ REFERENCE APPLICATION SPEC 114- - - - - FOR RECOMMENDED DRILL HOLE DIAMETER AND PLATING THICKNESS.

⚠ UNPLATED THRU HOLE.

⚠ DATUMS AND BASIC DIMENSIONS ESTABLISHED BY CUSTOMER.

⚠ DATUM A IS TOP SURFACE OF PC BOARD.

⚠ DIMENSION C IS THE NOMINAL THICKNESS OF CUSTOMER SUPPLIED PC BOARD.

MINIMUM PC BOARD THICKNESS:

    SINGLE SIDED = 1.45mm

    DOUBLE SIDED = 2.2mm

⚠ MATES WITH QSFP MSA COMPATIBLE TRANSCEIVER.

⚠ BASELINE FOR THESE DIMENSIONS IS THE CENTER OF COMPLIANT PIN HOLE.

⚠ DATE CODE (YYWWD) MARKED APPROXIMATELY AS SHOWN.

⚠ REFERENCE APP SPEC 114- - - - - FOR GASKET THICKNESS CALCULATION.

⚠ MATERIAL:

    CAGE ASSEMBLY: NICKEL SILVER, 0.25 THICK

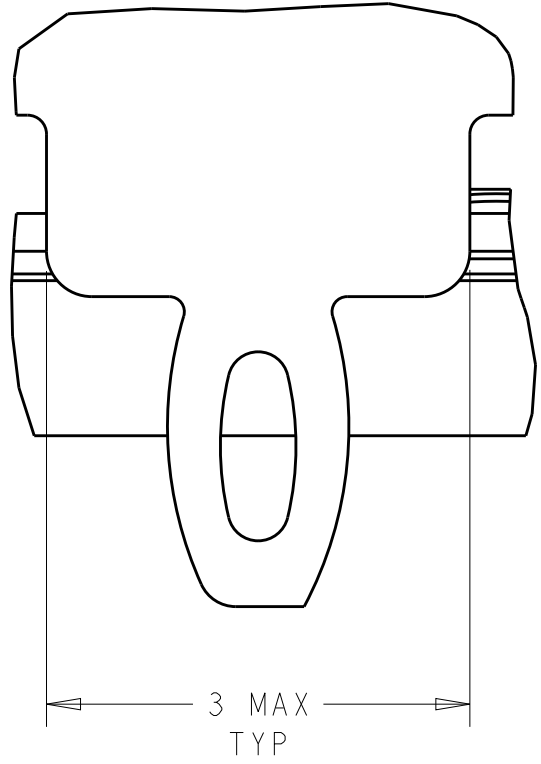
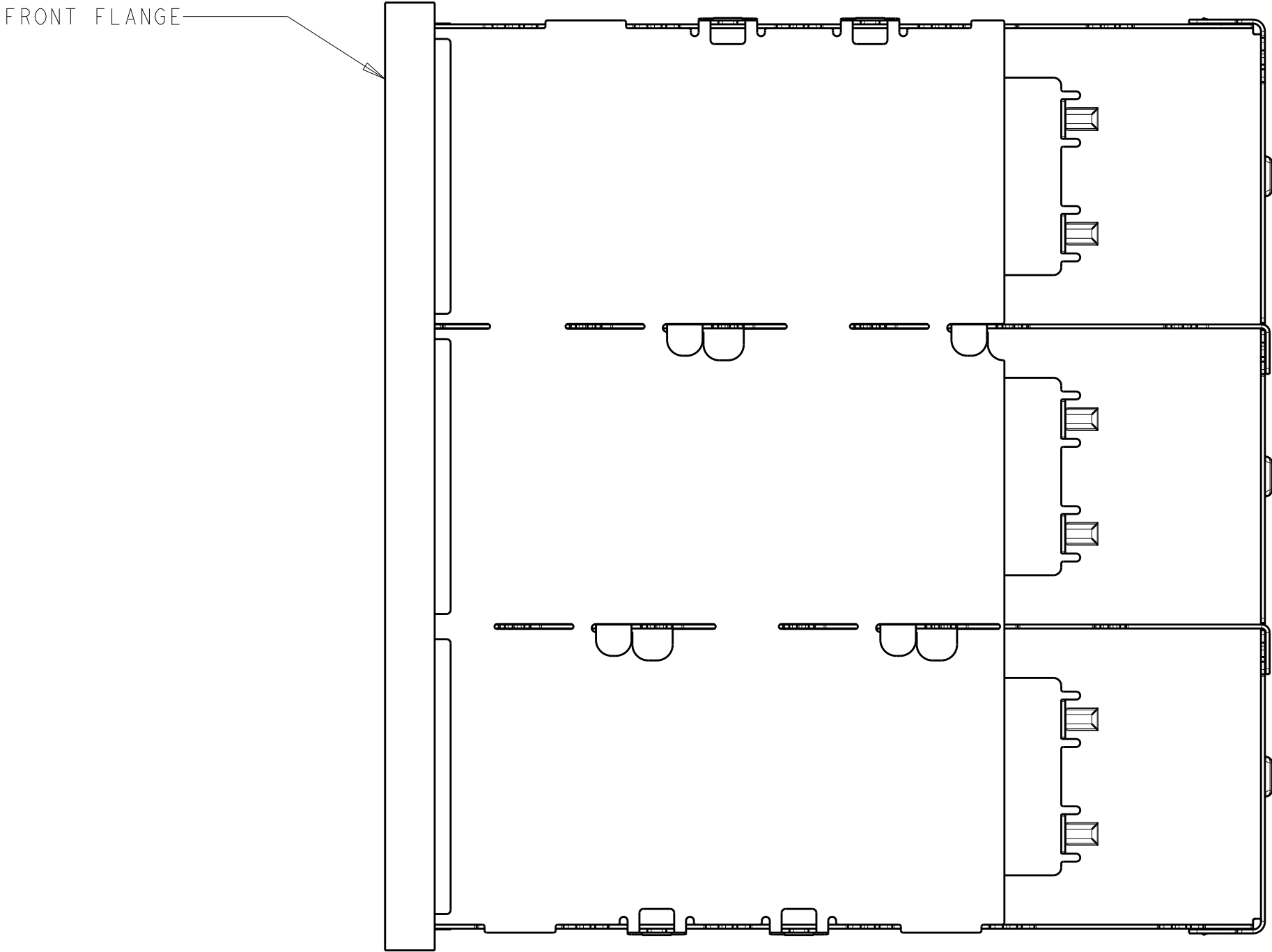
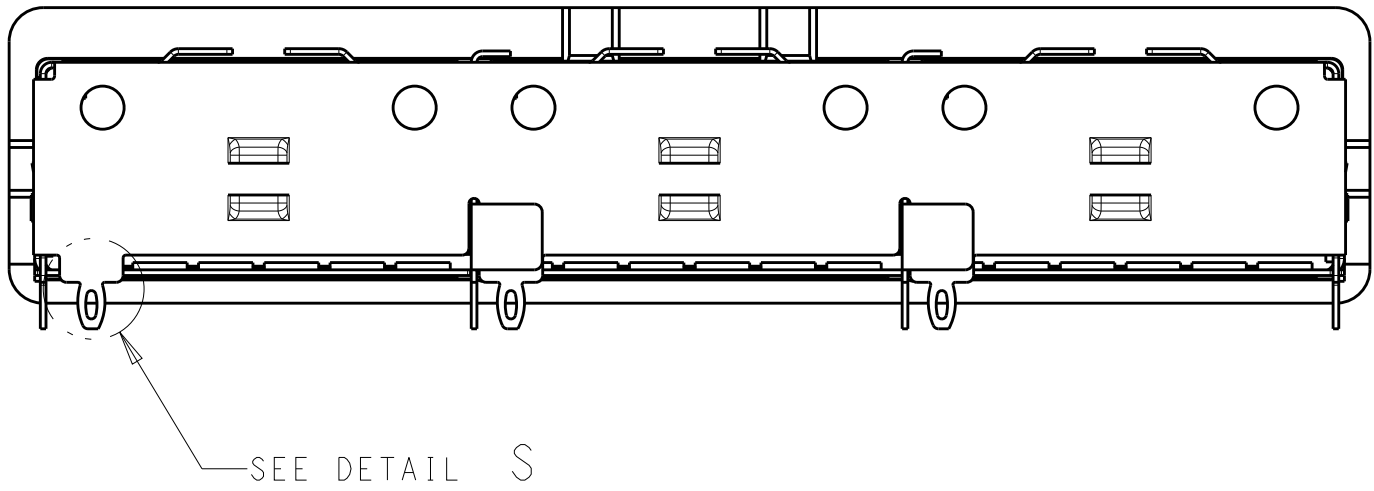
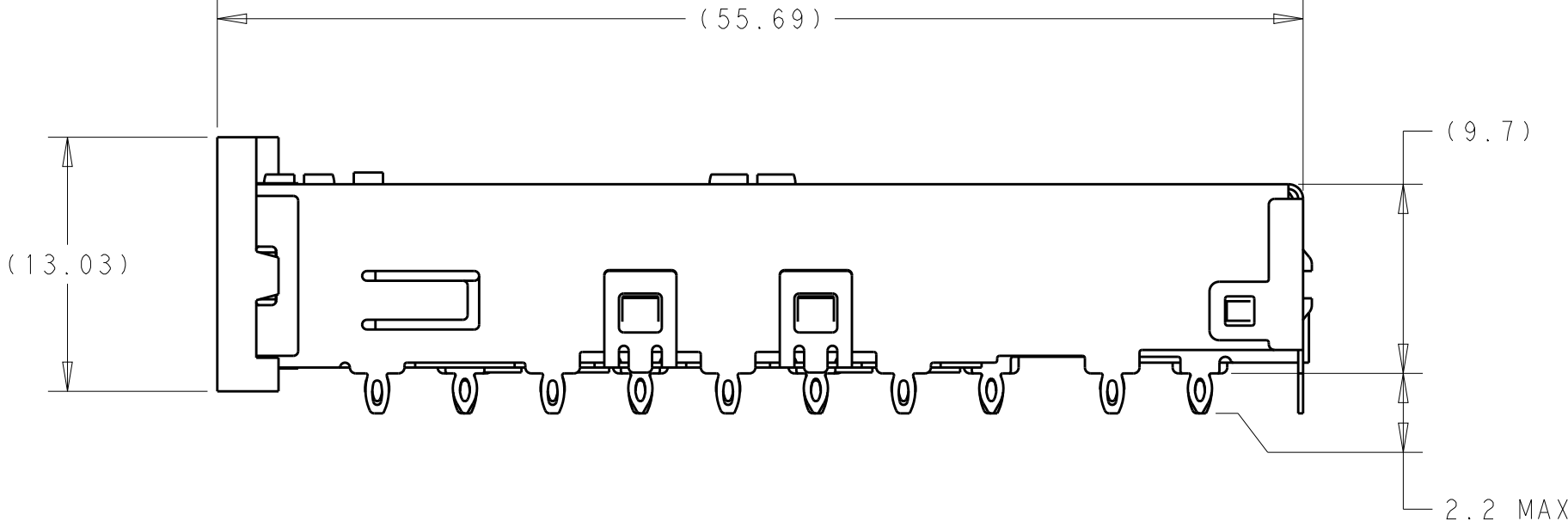
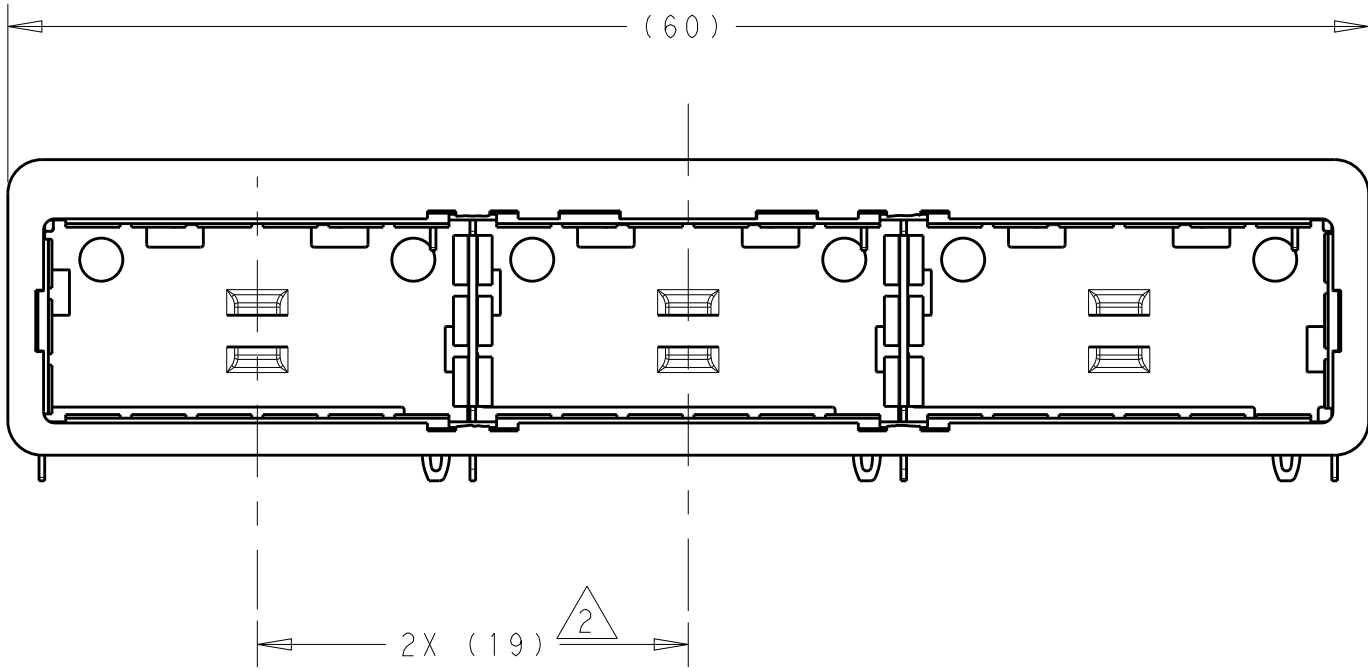
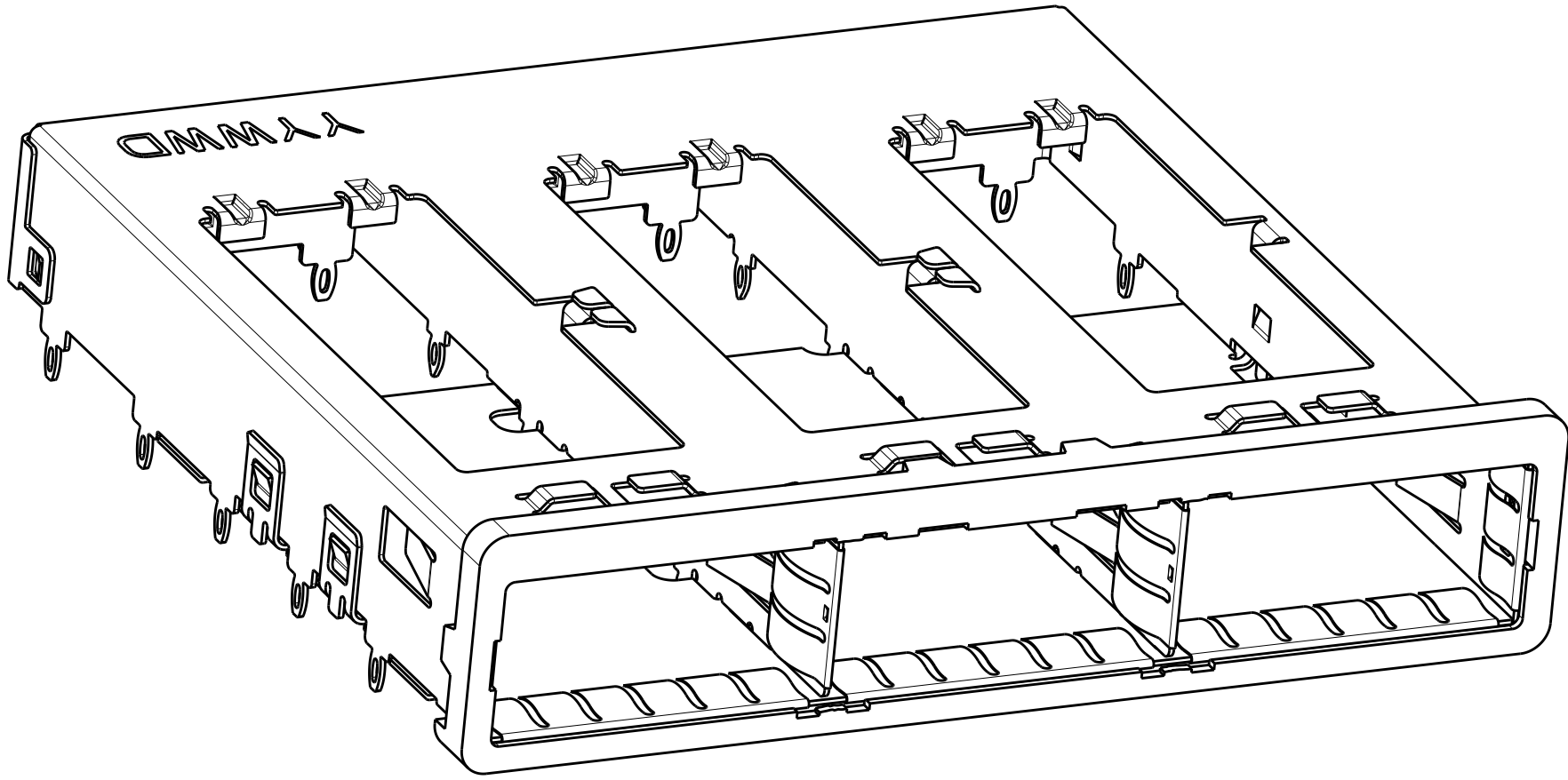
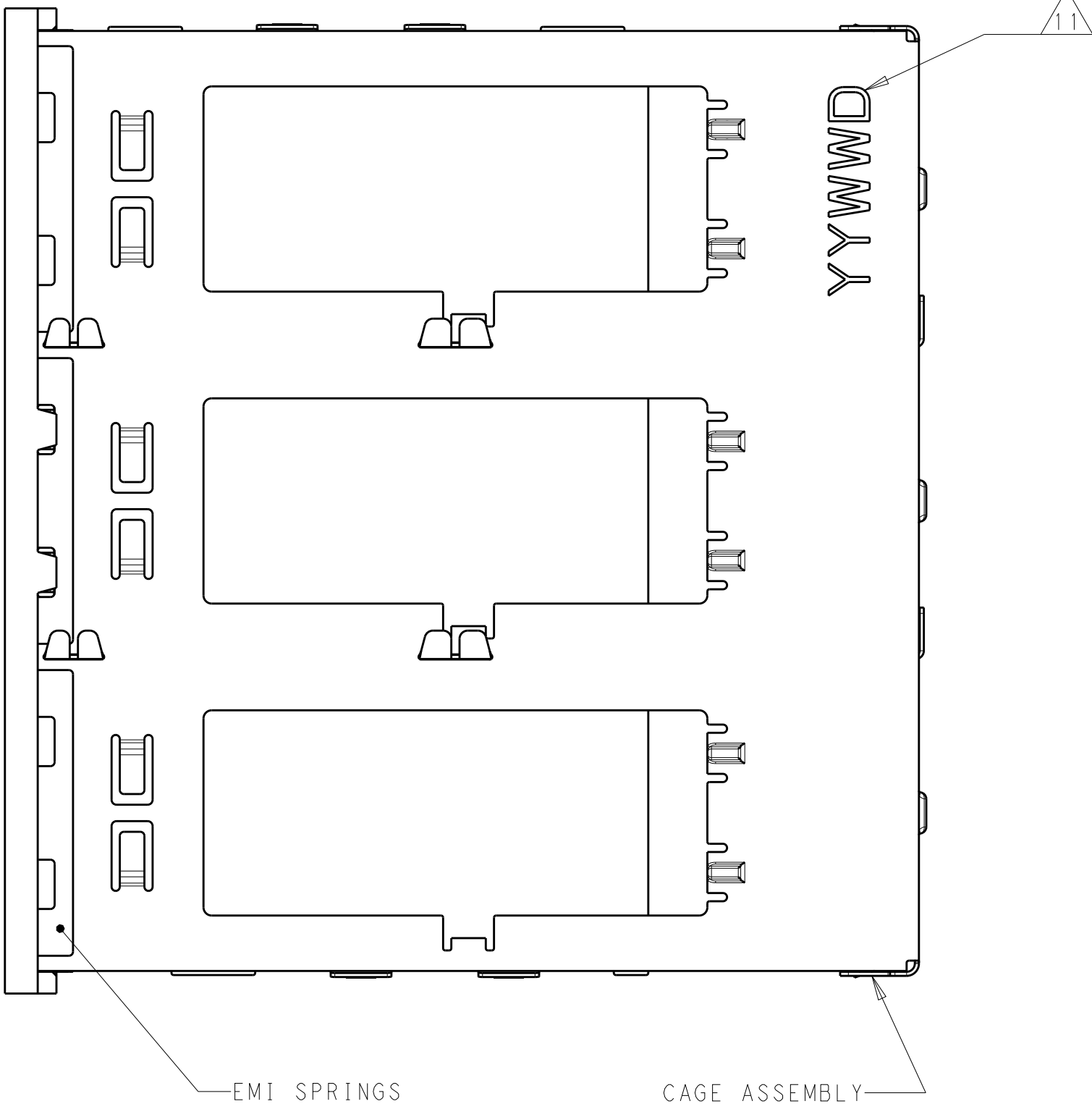
    EMI SPRINGS: COPPER ALLOY

    FRONT FLANGE: ZINC ALLOY





⚠ FINISH:

    EMI SPRINGS: 2µm MINIMUM TIN

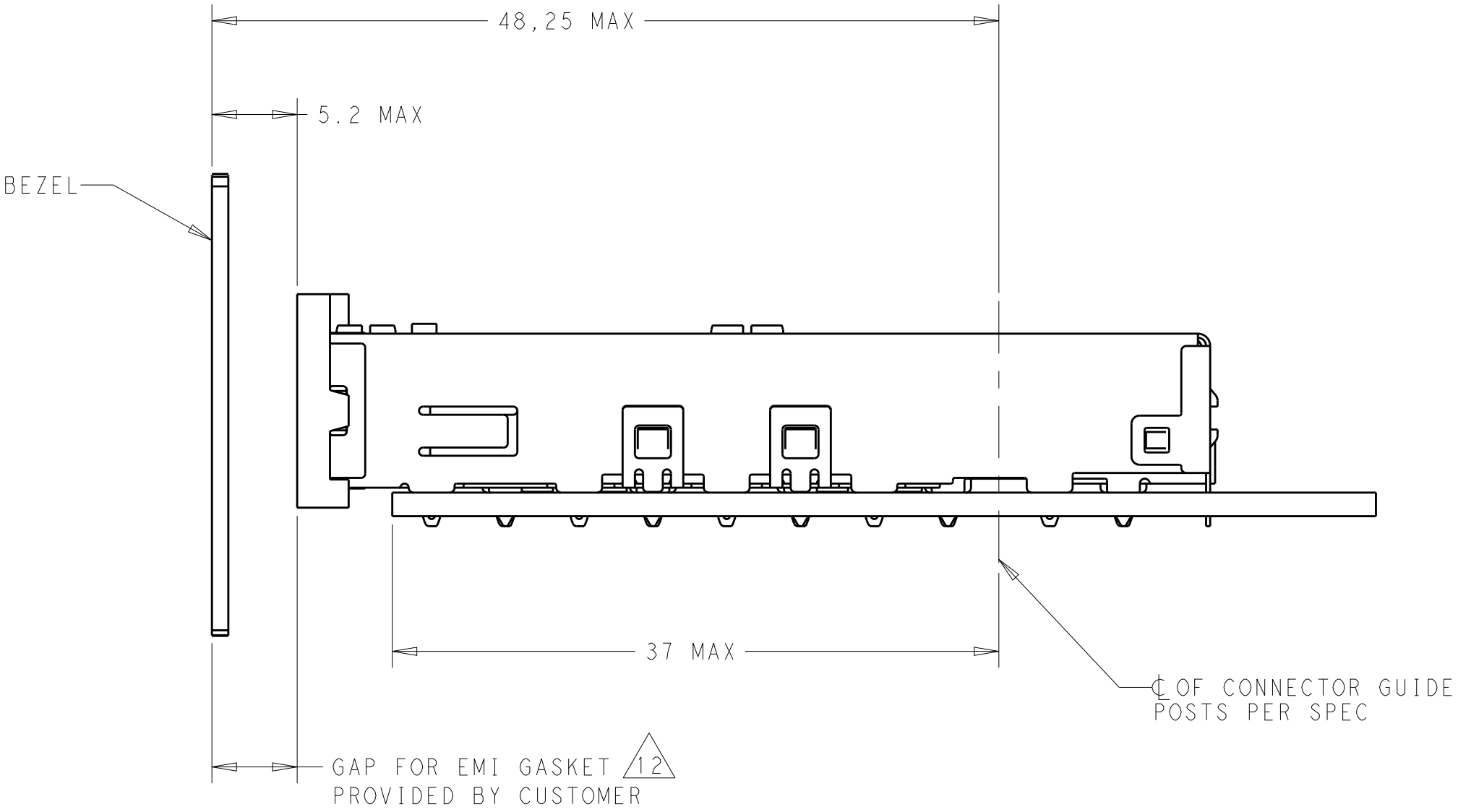
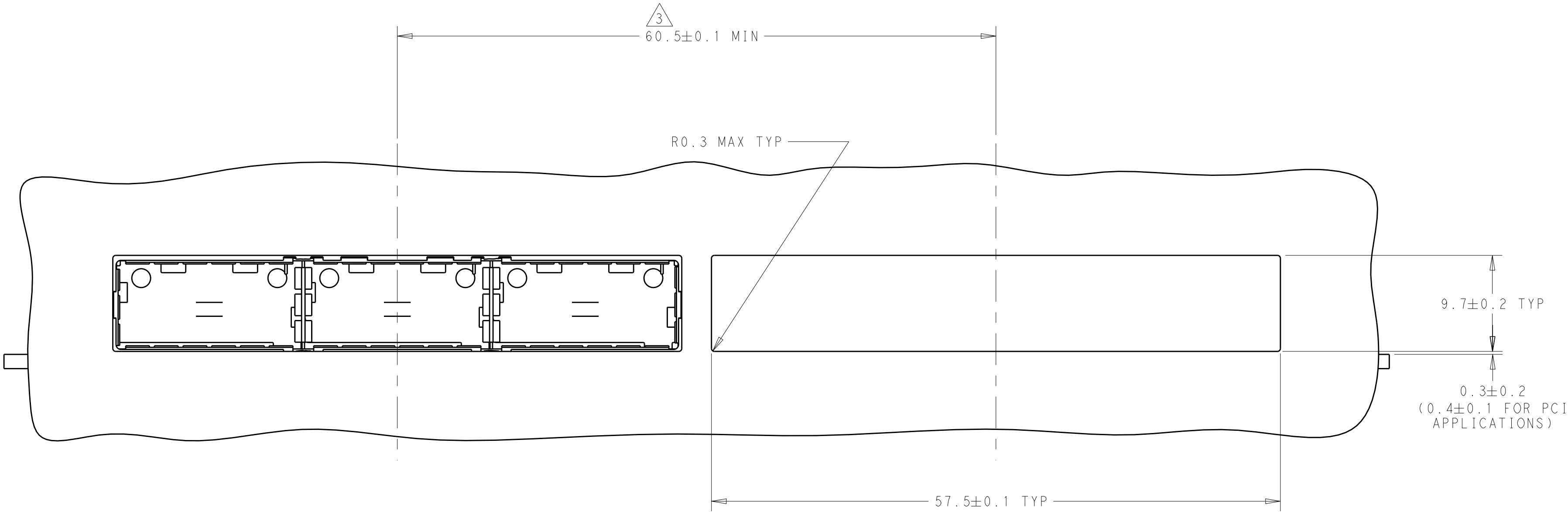
    FRONT FLANGE: 3µm MINIMUM TIN OVER 1.27µm MINIMUM NICKEL OVER 5.08µm MINIMUM COPPER.



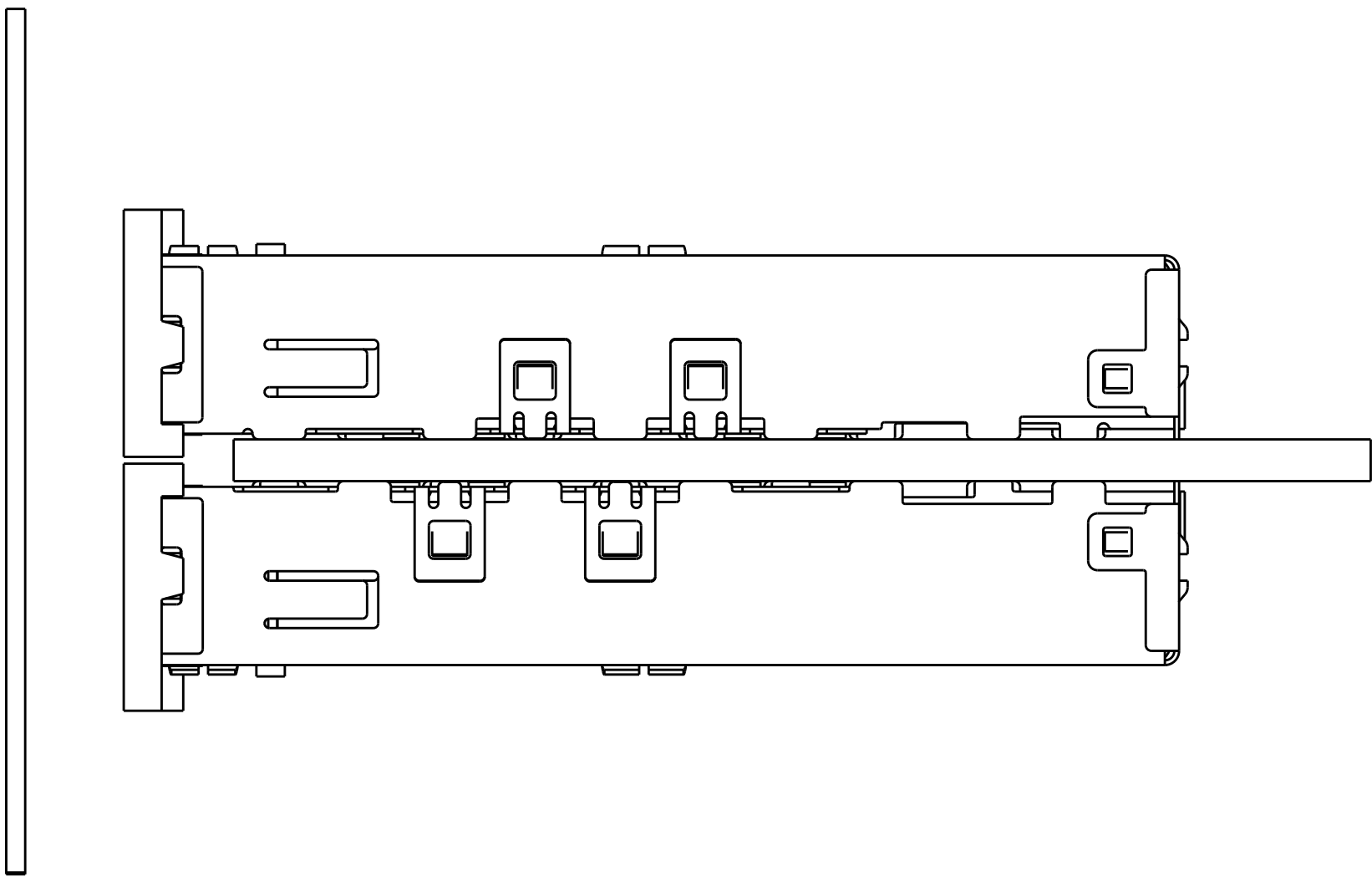
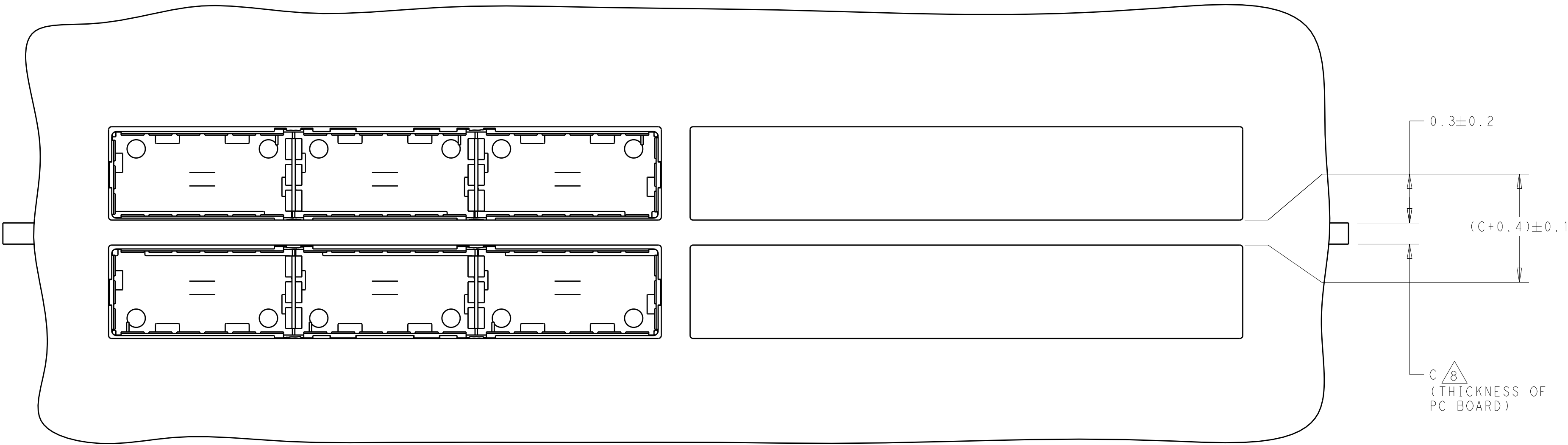
DETAIL S ⚠  
SCALE 20:1

THIS DRAWING IS A CONTROLLED DOCUMENT. DIMENSIONING AND TOLERANCING PER ASME Y14.5M-2009				DWN V.D.HEIJDEN 12AUG2011				TE Connectivity	
DIMENSIONS:				TOLERANCES UNLESS OTHERWISE SPECIFIED:		CHK R.VERBEET 12AUG2011		NAME	
mm				0 PLC ±.1 1 PLC ±0.1 2 PLC ±0.1 3 PLC ±0.013 4 PLC ±0.0001 ANGLES ±.1		APVD T.D.ROER 15AUG2011		1X3 CAGE ASSEMBLY, BEHIND BEZEL, zQSFP+	
						PRODUCT SPEC 108-----		-	
						APPLICATION SPEC 114-----		SIZE CAGE CODE DRAWING NO	
MATERIAL				FINISH		WEIGHT -		A 00779 C=2173238	
								RESTRICTED TO -	
CUSTOMER DRAWING						SCALE 3:1		SHEET 1 OF 4	
								REV A	

LOC	DIST	REVISIONS					
		P	LTR	DESCRIPTION	DATE	DWN	APVD
GP	00	-	-	SEE SHEET 1	-	-	-

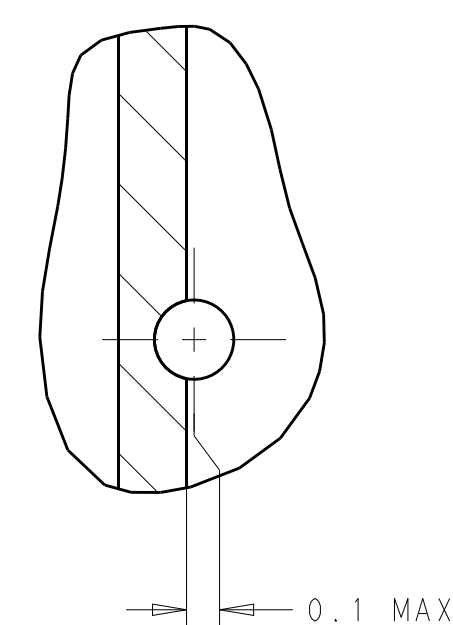


ONE SIDED CONFIGURATION  
SCALE 3:1


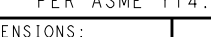


BELLY TO BELLY CONFIGURATION SIMILAR  
TO ONE SIDED EXCEPT WHERE NOTED  
SCALE 3:1

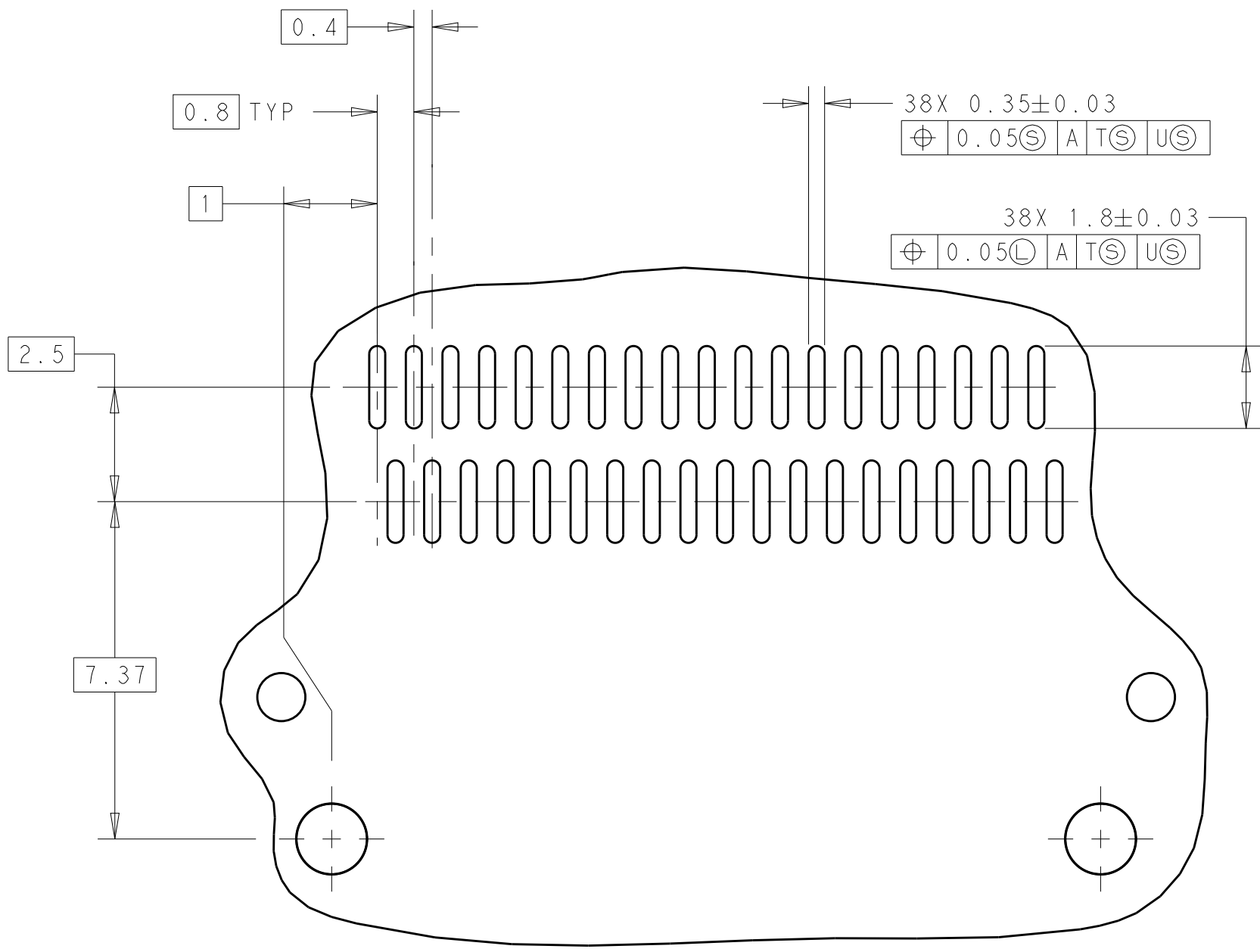
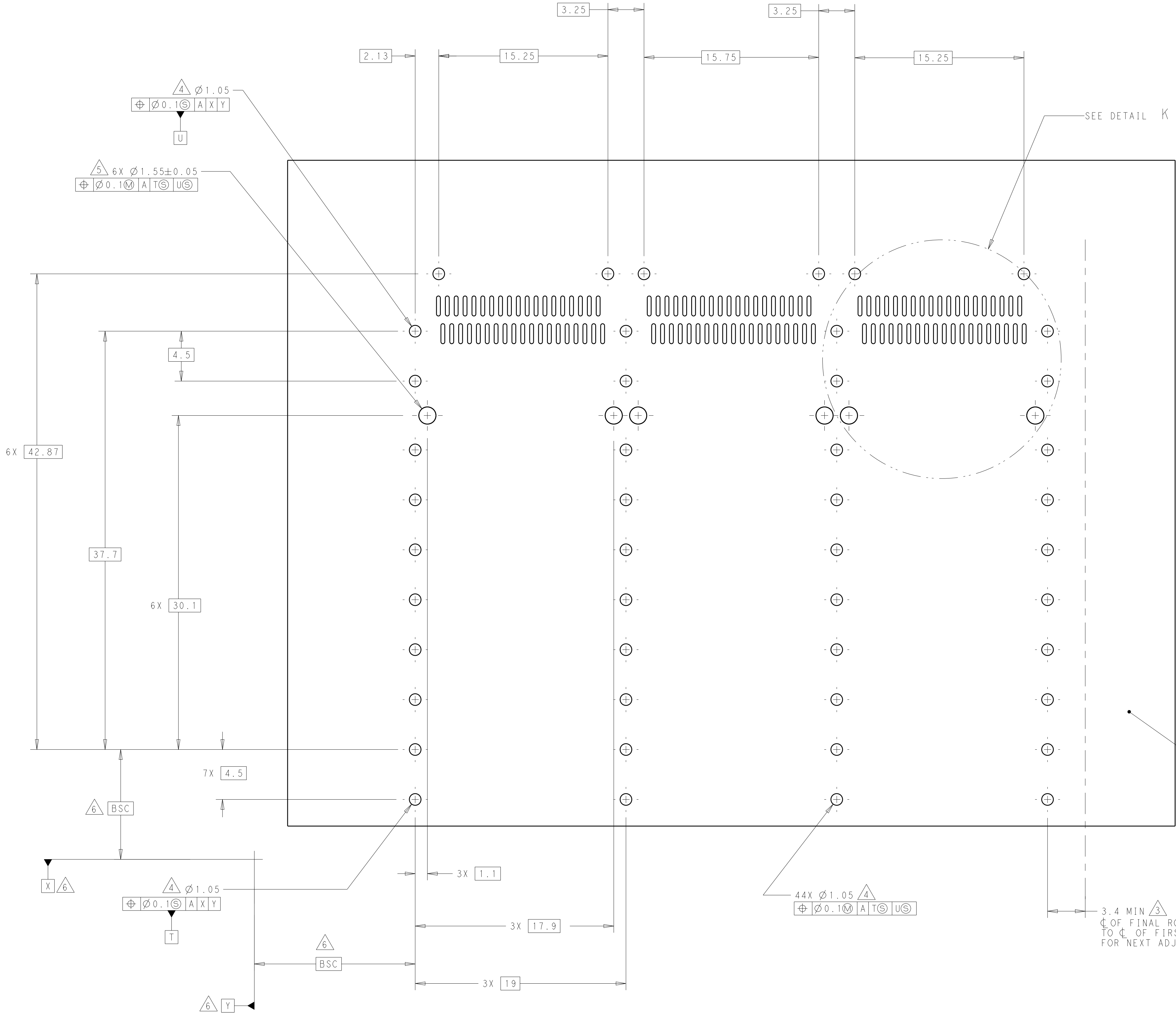
THIS DRAWING IS A CONTROLLED DOCUMENT. DIMENSIONING AND TOLERANCING PER ASME Y14.5M-2009		DWN J.V.D. HEIJDEN CHK R. VERBEET APVD T.D. ROER	12AUG2011 12AUG2011 15AUG2011	TE Connectivity	
DIMENSIONS: mm		TOLERANCES UNLESS OTHERWISE SPECIFIED:		NAME 1X3 CAGE ASSEMBLY, BEHIND BEZEL, ZQSFP+	
0 PLC ±.1 1 PLC ±0.1 2 PLC ±0.1 3 PLC ±0.013 4 PLC ±0.0001		PRODUCT SPEC 108- APPLICATION SPEC 114- ANGLES FINISH		SIZE A100779C=2173238	
MATERIAL		WEIGHT -		RESTRICTED TO -	
CUSTOMER DRAWING		SCALE 3:1		SHEET 2 OF 4	
				REV A	

[illegible]

DETAIL J  
3 PLACES  
SCALE 8:1



THIS DRAWING IS A CONTROLLED DOCUMENT. DIMENSIONING AND TOLERANCING PER ASME Y14.5M-2009		OWN 12AUG2011 BY J.D.H.EI.DEL CHK 12AUG2011 R.VERBEET APP'D T.O.BOFER 15AUG2011		 TE Connectivity	
DIMENSIONS:  mm	TOLERANCES UNLESS OTHERWISE SPECIFIED:	NAME		X13 CAGE ASSEMBLY, BEHIND BEZEL.	
	Ø PLC ±.01 PLC ±.01 PLC ±.01 PLC ±.013 PLC ±.0001 ANGLES 90°	PRODUCT SPEC 108-		ZOSFP+	
MATERIAL	FINISH	APPLICATION SPEC 114-		RESTRICTED TO	
		WEIGHT		SIZE CAGE CODE DRAWING NO	
		CUSTOMER DRAWING		A100779C=2173238	
				SCALE 3:1 SHEET 3 OF 4 REV A	

LOC	DIST	REVISIONS					
		P	LTR	DESCRIPTION	DATE	DWN	APVD
GP	00	-	-	SEE SHEET 1	-	-	-



DETAIL K  
3 PLACES  
SCALE 8:1

RECOMMENDED PC BOARD LAYOUT  
BELLY TO BELLY CONFIGURATION  
SCALE 5:1

THIS DRAWING IS A CONTROLLED DOCUMENT. DIMENSIONING AND TOLERANCING PER ASME Y14.5M-2009		DWN J.V.D. HEIJDEN 12AUG2011	 TE Connectivity	
		CHK R. VERBEET 12AUG2011		
DIMENSIONS: mm		APVD T.D. ROER 15AUG2011	NAME 1X3 CAGE ASSEMBLY, BEHIND BEZEL, zQSFP+	
		PRODUCT SPEC 108-	SIZE A100779	
		APPLICATION SPEC 114-	CAGE CODE C=2173238	
MATERIAL		WEIGHT -	RESTRICTED TO -	
FINISH		SCALE 3:1		SHEET 4 OF 4
CUSTOMER DRAWING		REV A		