

FEATURES:

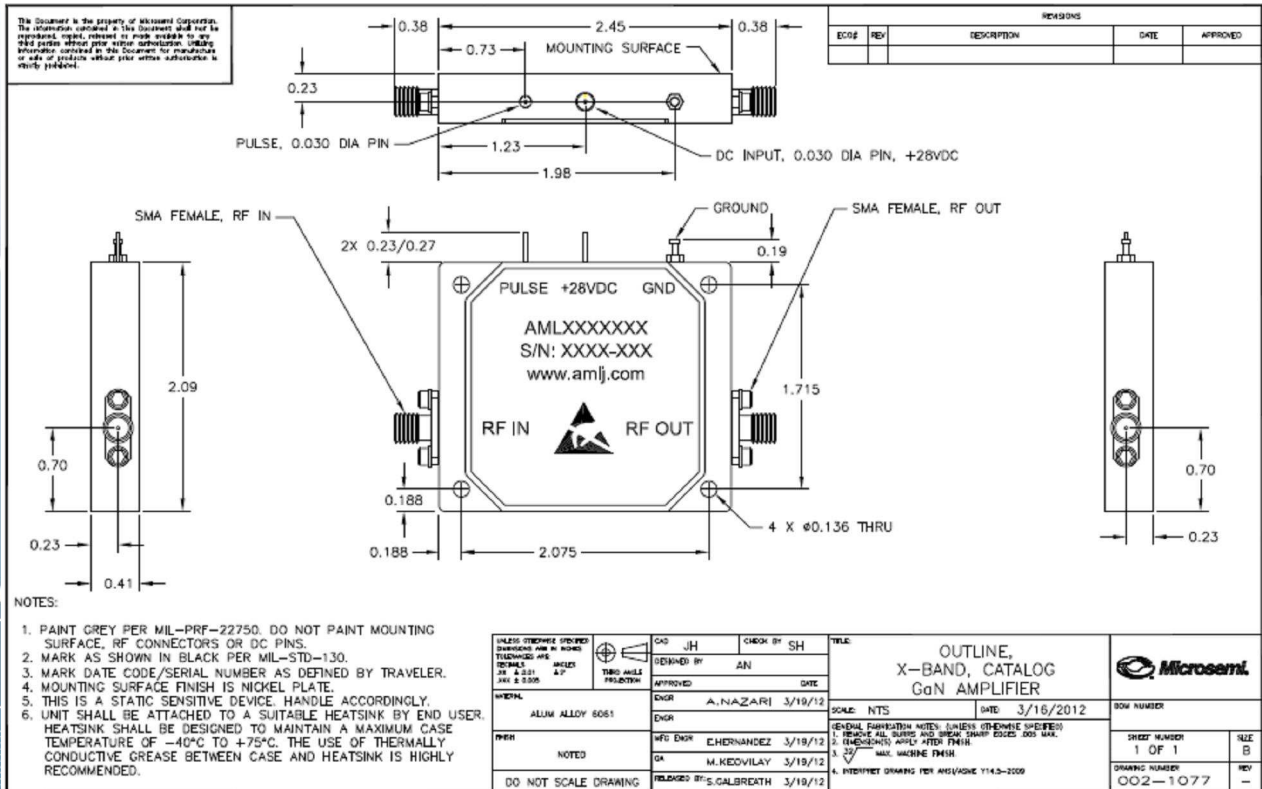
- Internal voltage regulator, reverse voltage protection, and DC filter feed through are included.
- Amplifier is in hermetically sealed housing with field removable SMA (f) connectors.
- ATP (100%) testing includes Gain, Flatness, NF, Psat, VSWR, and DC Current measurement at room temperature.
- Dimensions: 2.45" x 2.09" x 0.41"

ELECTRICAL SPECIFICATIONS:

PARAMETER	MIN	TYP	MAX	UNITS
Frequency Range	5.5		9.0	GHz
Gain	45			dB
Gain Flatness vs. Freq.			±4.0	dB
Noise Figure			6.0	dB
Psat	44	44.5		dBm
Psat		28		Watts
DC Voltage		28		V
DC Current		4.0		A
PAE		25		%
Operating Temperature	-54		+85	°C
TTL Control	DC On/Off			
Switching Speed	On: 250 ns nom Off: 500 ns nom			
50% TTL – 90% RF/10% RF				
DC Power in Off condition	<10% full RF			

Specifications above are at +25°C unless stated otherwise

OUTLINE:



Specifications are subject to change without notice