

## DETAILS

<b>Product Number</b>	CA14367_FLARE-MAXI-D-TAPE
<b>Family</b>	Flare
<b>Type</b>	Assembly
<b>Color</b>	clear
<b>Diameter</b>	33,9 + 33,3 mm
<b>Height</b>	16,9 mm
<b>Style</b>	rectang
<b>Optic Material</b>	PMMA
<b>Holder Material</b>	
<b>Fastening</b>	pin, tape
<b>Status</b>	production ready
<b>ROHS Compliant</b>	Yes
<b>Date Updated</b>	9/05/2014



## OPTICAL PROPERTIES

LED	Viewing Angle	Light Beam	Efficiency	cd/lm	Connector
XM-L	110+15 deg	REC-class	94 %	1.700	-
XP-G	115+15 deg	REC-class	94 %	1.900	-
MK-R	100+23 deg	REC-class	92 %	1.200	-
XP-G2	106+14 deg	REC-class	94 %	2.000	-
XM-L2	101+17 deg	REC-class	94 %	1.900	-
XT-E	117+14 deg	REC-class	94 %	1.900	-
XP-L	119+16 deg	REC-class	94 %	1.500	-
XHP50	109+20 deg	REC-class	92 %	1.300	-
XHP70	107+27 deg	REC-class	94 %	1.000	-
XHP35 HD	sim: 92+15	REC-class	sim: 92 %	sim: 1.900	-
XHP35 HI	sim: 86+11	REC-class	sim: 93 %	sim: 2.600	-
XP-L2	107+16 deg	REC-class	92 %	1.500	-
LUXEON T	102+13 deg	REC-class	92 %	1.800	-
LUXEON A	104+12 deg	REC-class	94 %	2.100	-
LUXEON H50-2	sim: 10+65	REC-class	sim: 92 %	sim: 3.300	-
LUXEON M/MX	102+25 deg	REC-class	94 %	1.400	-
LUXEON Rebel ES	104+13 deg	REC-class	94 %	2.000	-
LUXEON TX	103+13 deg	REC-class	93 %	2.060	-
NCSxx19B	107+13 deg	REC-class	94 %	2.100	-
NS9x383	110+16 deg	REC-class	93 %	1.500	-
NVSxx19B/NVSxx19C	116+13 deg	REC-class	94 %	1.700	-
Oslon Square PC	104+12 deg	REC-class	94 %	2.000	-
Oslon Square EC	99+14 deg	REC-class	94 %	2.000	-
Duris S10	92+21 deg	REC-class	93 %	1.400	-
Duris P10	sim: 88+17	REC-class	sim: 93 %	sim: 1.760	-



# PRODUCT DATASHEET

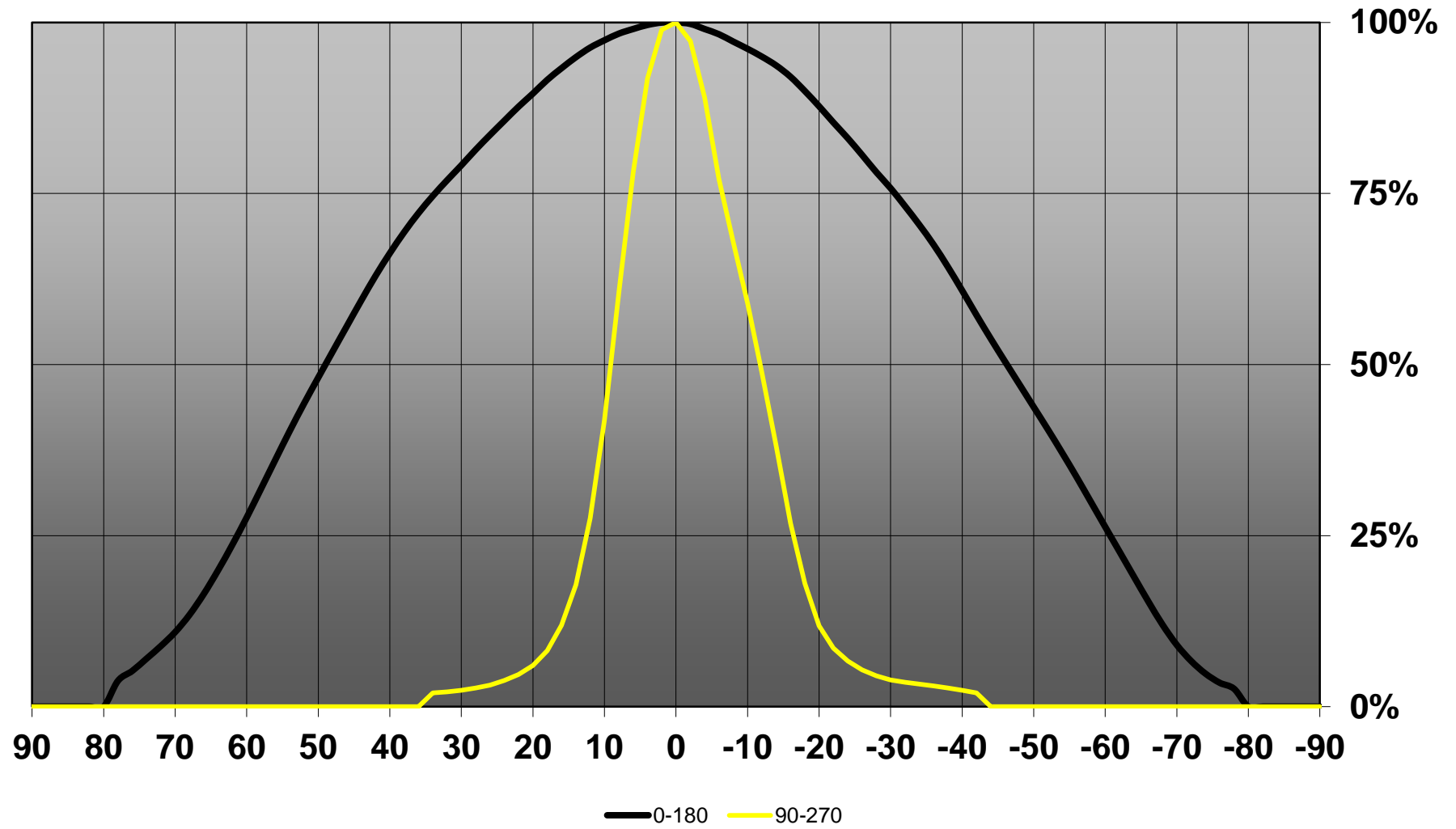
## Flare series

last update 9/5/2014

### OPTICAL PROPERTIES

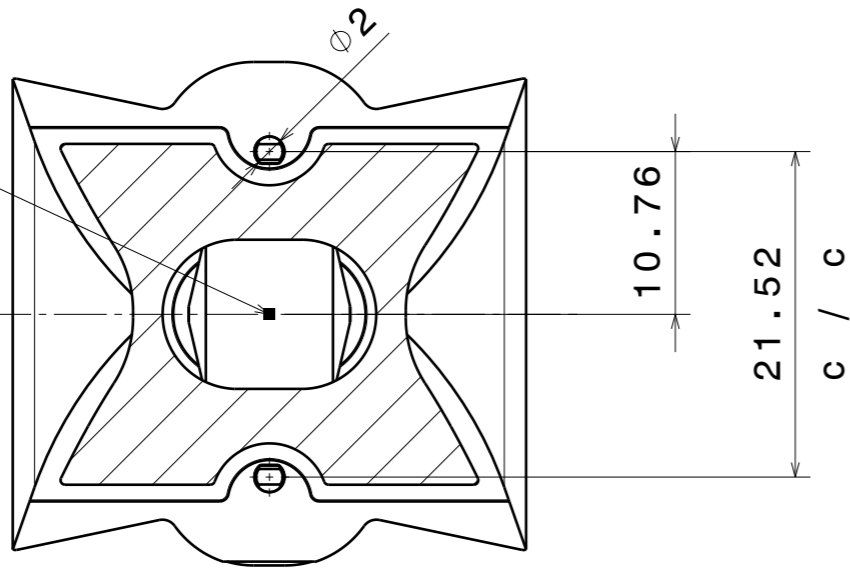
LED	Viewing Angle	Light Beam	Effi- ciency	cd/lm	Connector
LH351Z	97+13 deg	REC-class	94 %	2.200	-
Z5M1/Z5M2	104 + 14 deg	REC-class	94 %	2.100	-

Relative intensity of CA14367\_FLARE-MAXI-D-TAPE\_(Duris\_S10)



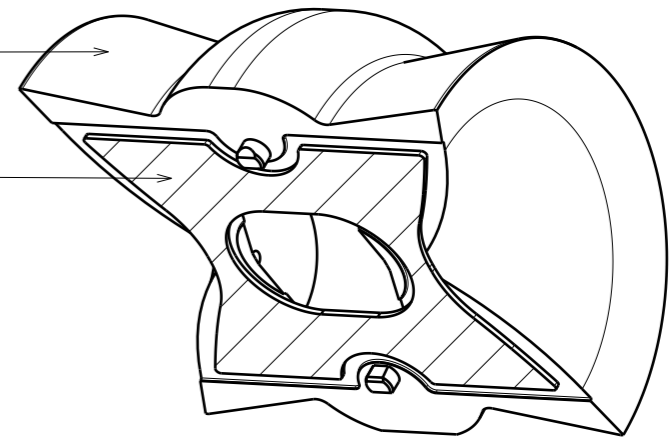
Led position

Bottom view



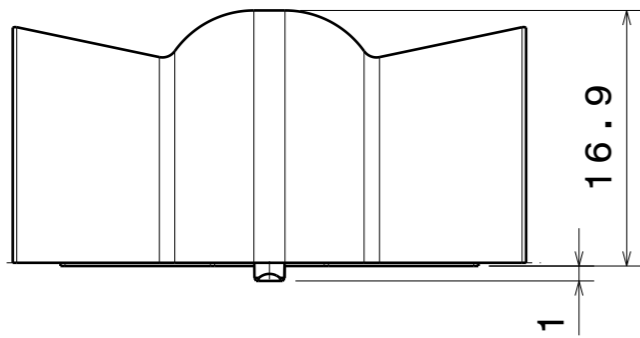
Lens

Tape

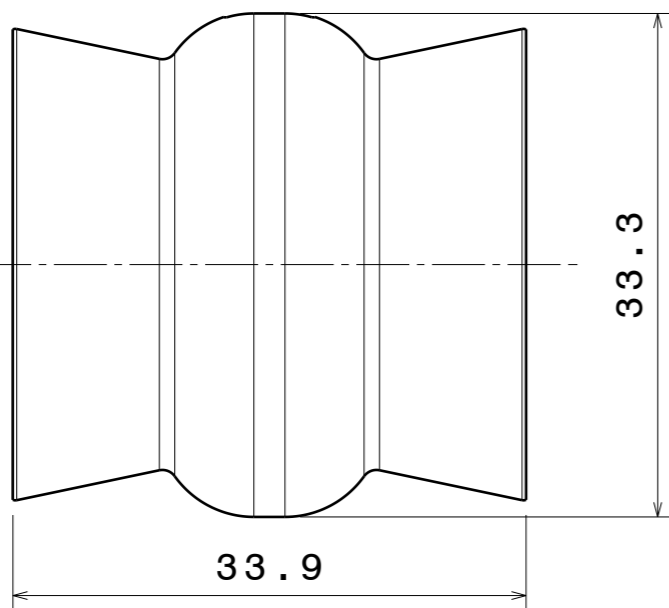


Isometric view

Front view



Top view



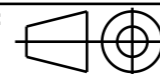
Material: PMMA 8N / PU 2-SIDED ADHESIVE FOAM TAPE

Tolerances if not otherwise shown  
 According to DIN ISO 2768-1  
 Linear measures:  
 Up to 30mm class M, otherwise class C.  
 According to DIN ISO 2768-2  
 Form and position: class L



Ledil Oy  
 Salorankatu 10  
 FIN 24240 SALO  
 Finland

THIRD ANGLE PROJECTION:



DRAWING TITLE

FLARE-MAXI (WITH TAPE)

SIZE

PART NUMBER

A3

FLARE-MAXI (WITH TAPE)

SCALE

1:1

WEIGHT

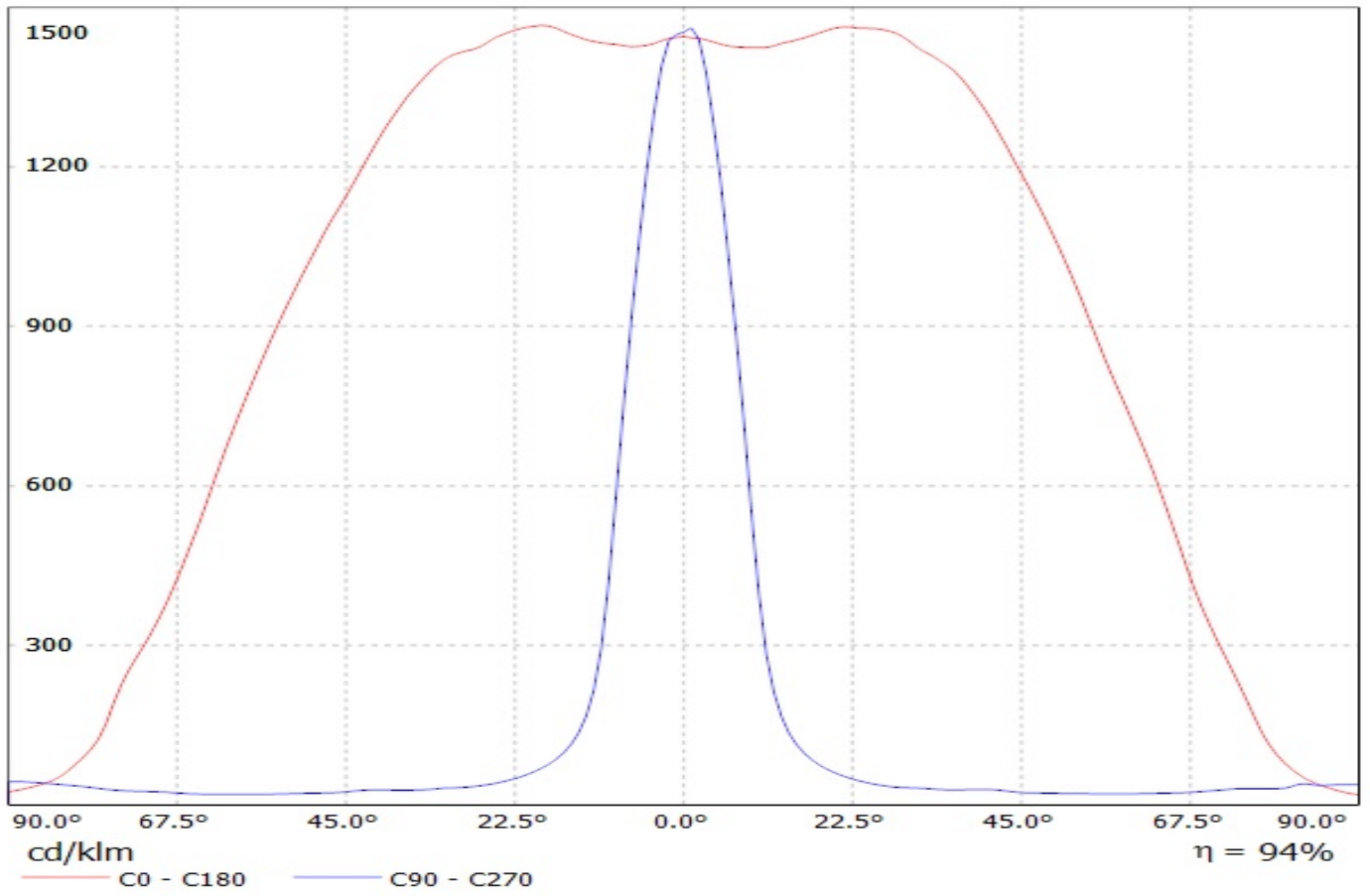
-

SHEET

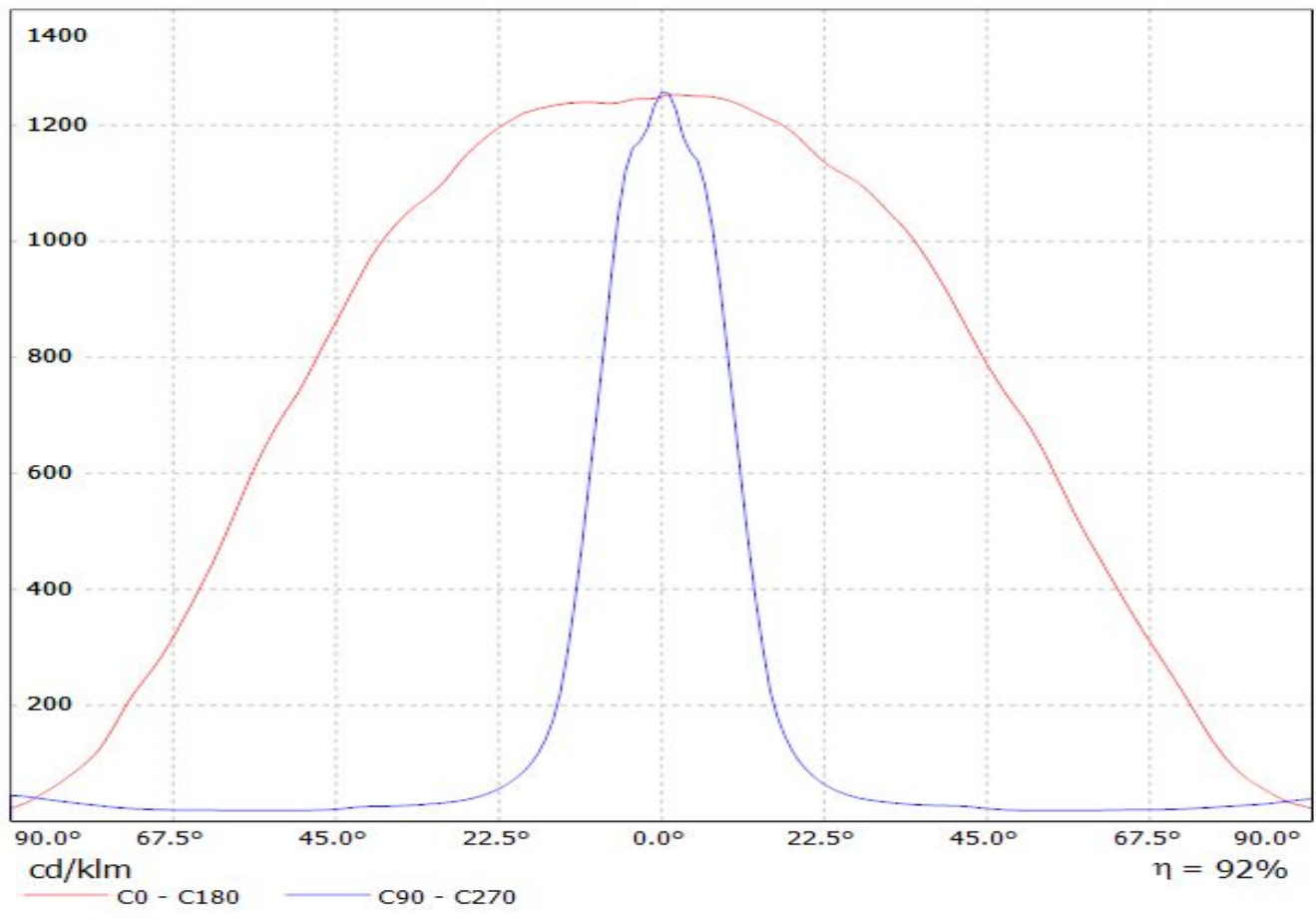
1/1

This drawing is the property  
 of LEDiL Oy. It may not be  
 reproduced, copied or  
 communicated without a written  
 agreement with LEDiL Oy.

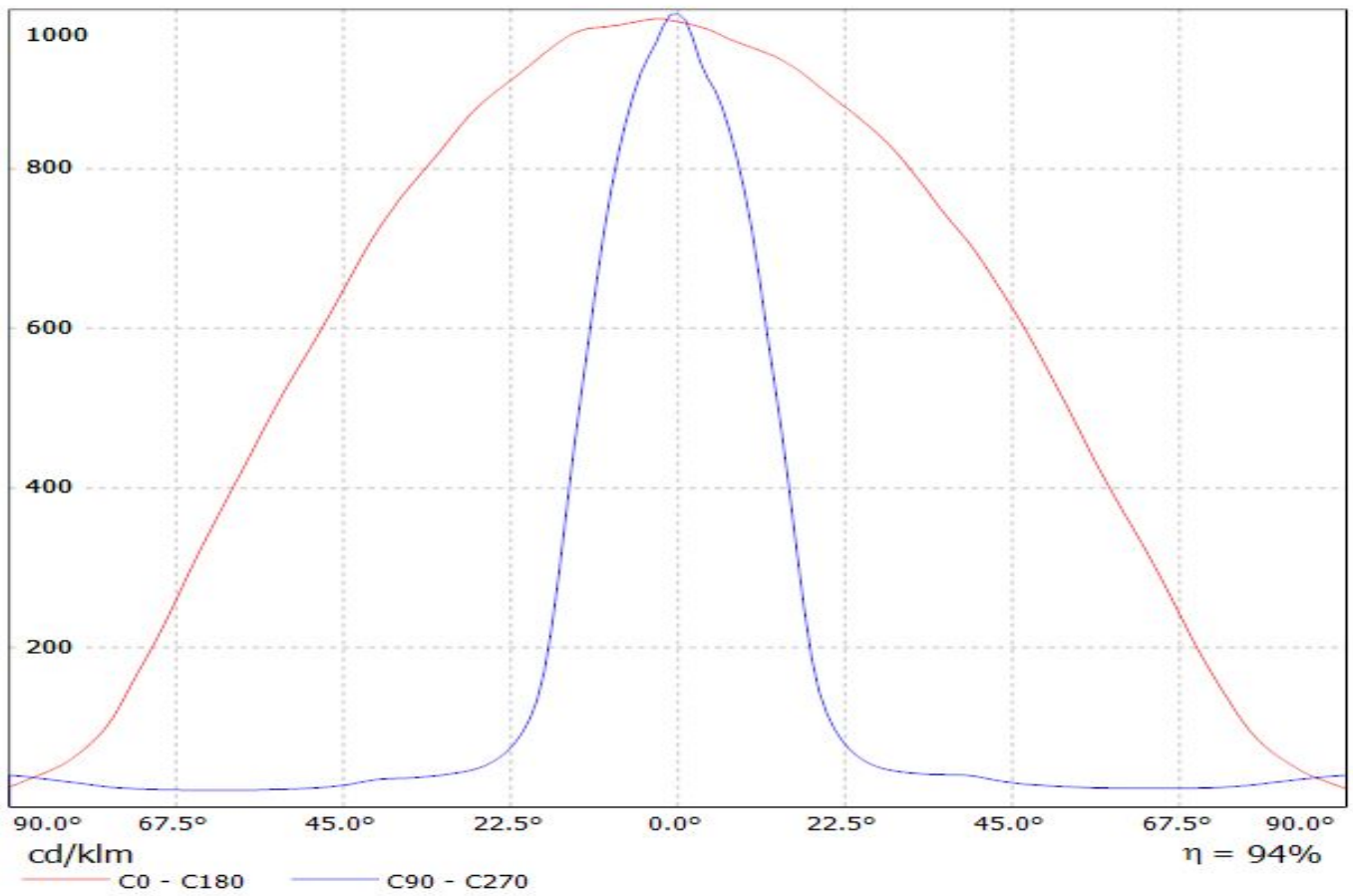
Luminaire: LEDiL Oy CA14367\_FLARE-MAXI-D-TAPE\_(XP-L)  
Lamps: 1 x Cree\_XP-L\_129.7lm@250mA\_P=0.73723W\_I=249.9mA



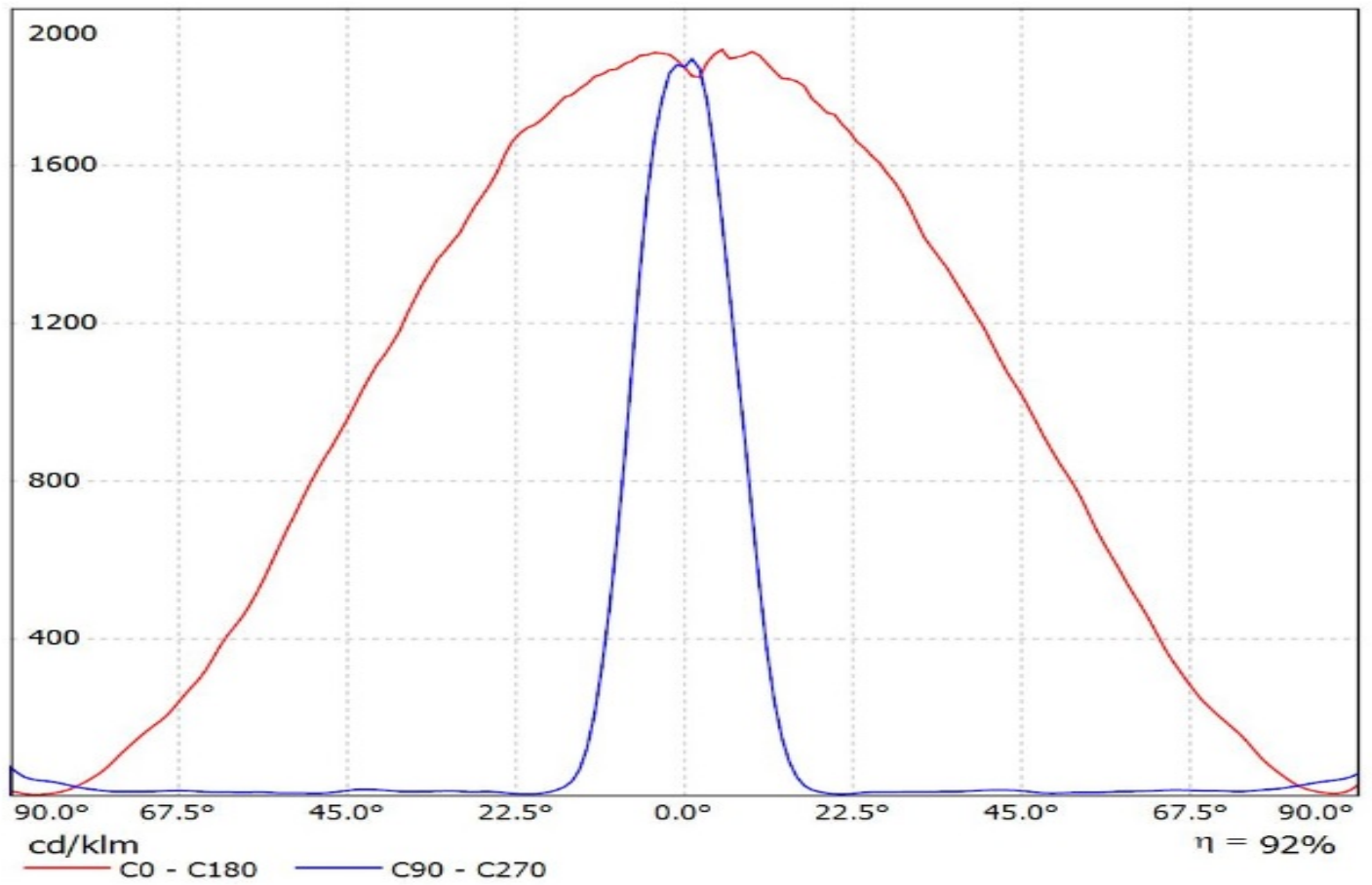
Luminaire: LEDiL Oy CA14367\_FLARE-MAXI-D-TAPE\_(CREE\_XHP50\_COOL\_WHITE)  
Lamps: 1 x CREE\_XHP50\_COOL\_WHITE\_242.068lm@250mA\_CCT=COOLWHITE\_I=02499mA\_P=1.42958



Luminaire: EVERFINE CA14367\_FLARE-MAXI-D-TAPE\_(CREE\_XHP70)  
Lamps: 1 x CREE\_XHP70\_288.639lm@250mA\_P=2.69892W\_I=0.2499A

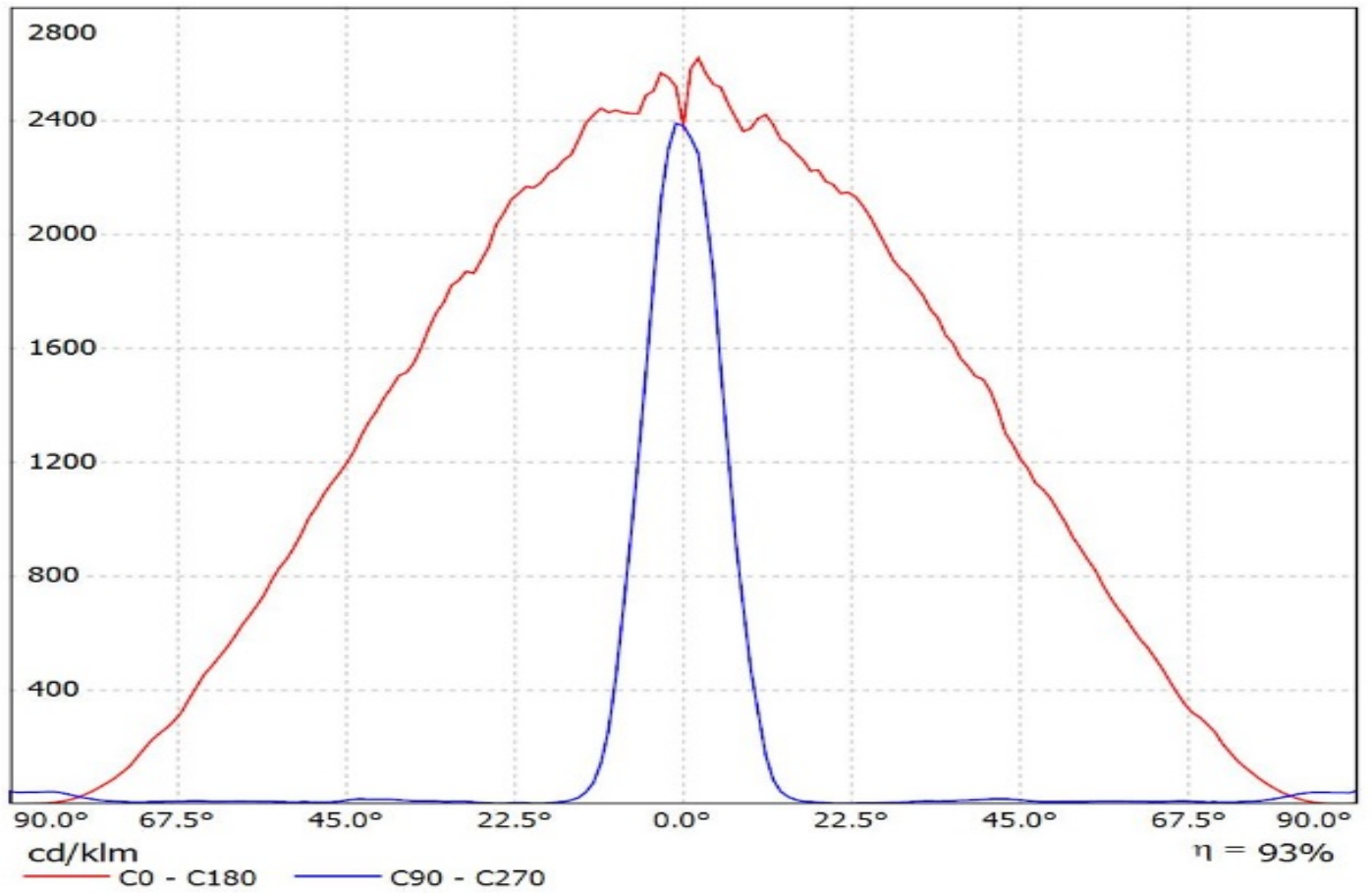


Luminaire: Ledil Oy CA14367\_FLARE-MAXI-D-TAPE\_(XHP35\_HD)\_SIMULATED  
Lamps: 1 x Cree XHP35 HD



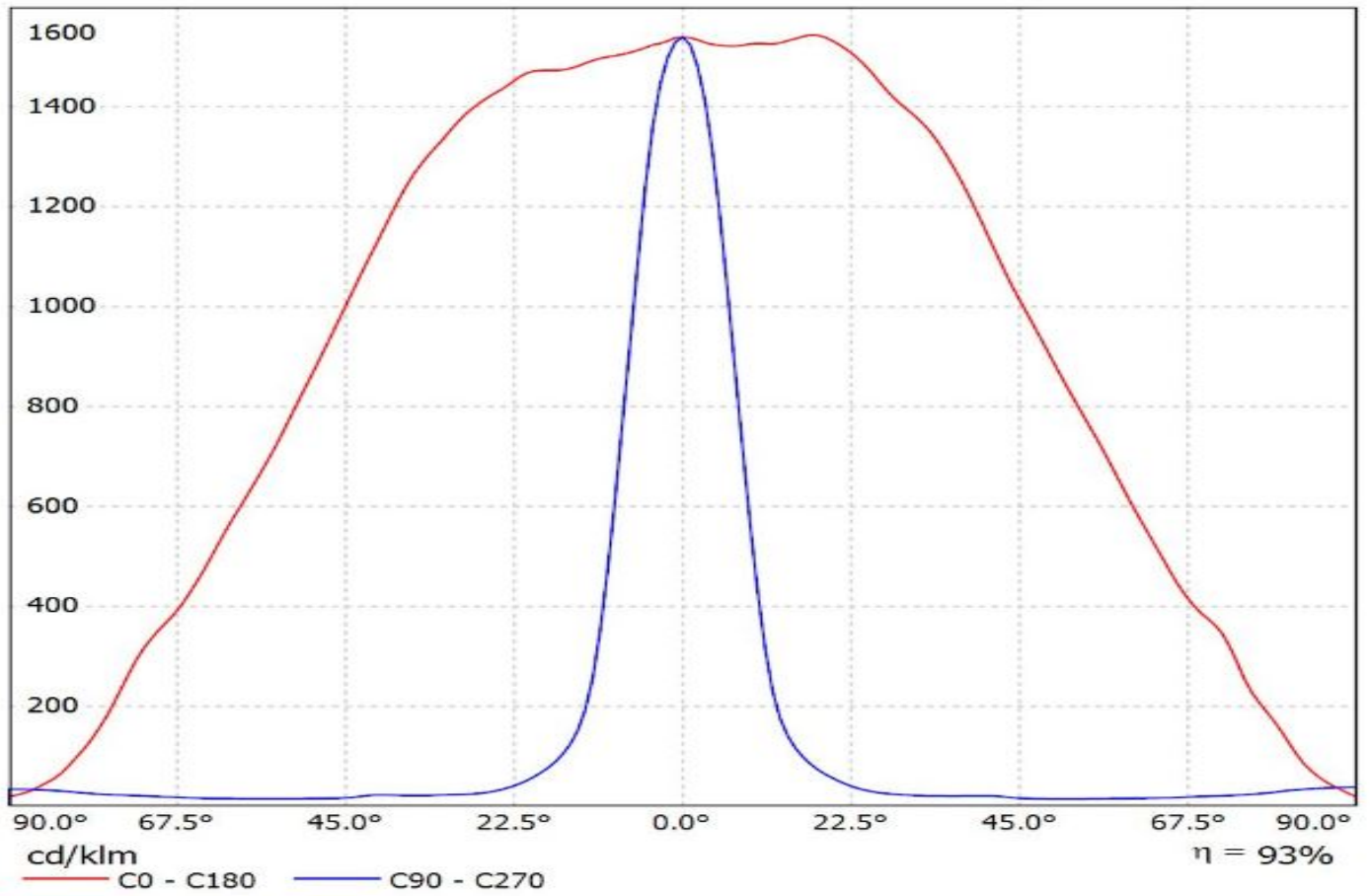


Luminaire: Ledil Oy CA14367\_FLARE-MAXI-D-TAPE\_(XHP35\_HI)\_SIMULATED  
Lamps: 1 x Cree XHP35 HI

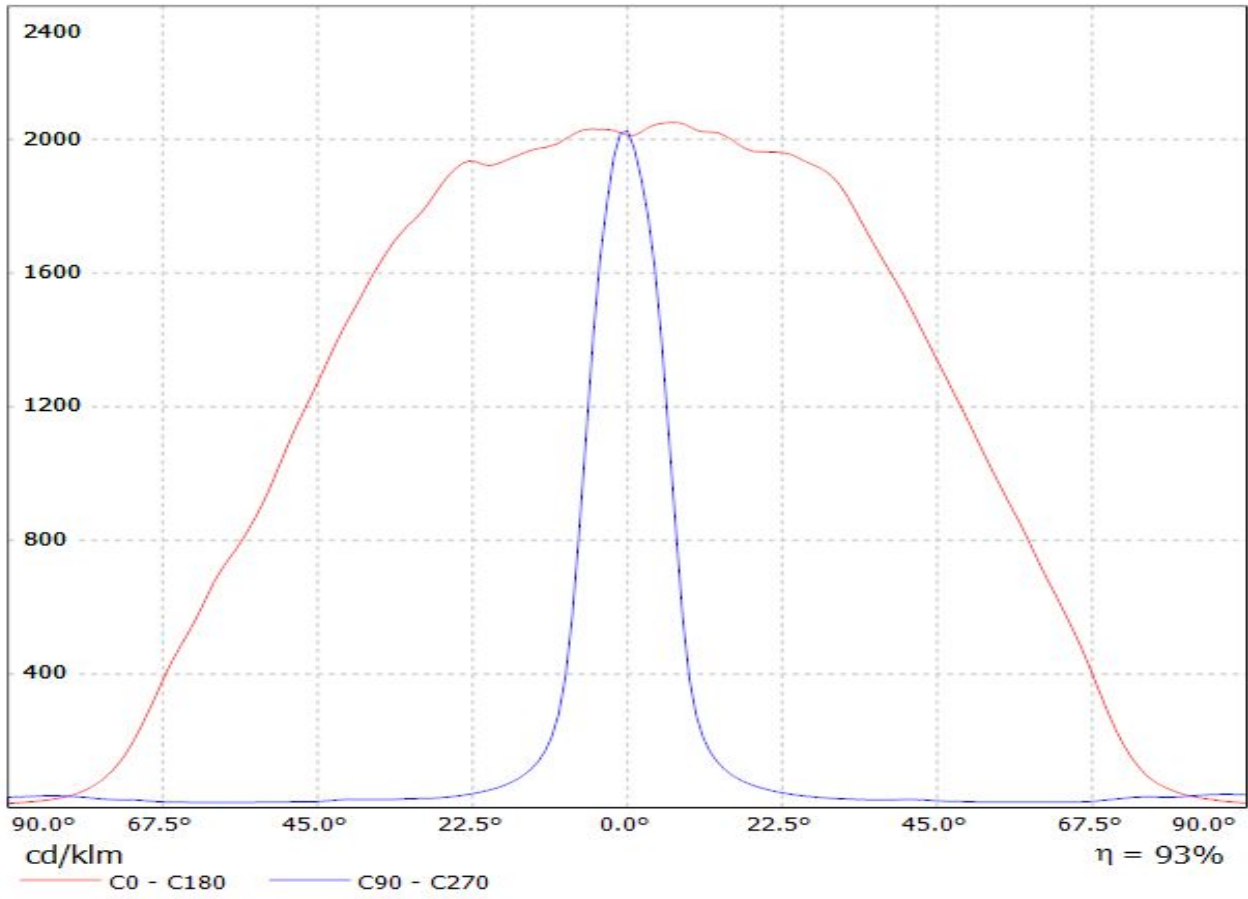


Luminaire: Ledil CA14367\_FLARE-MAXI-D-TAPE\_(XP-L2)

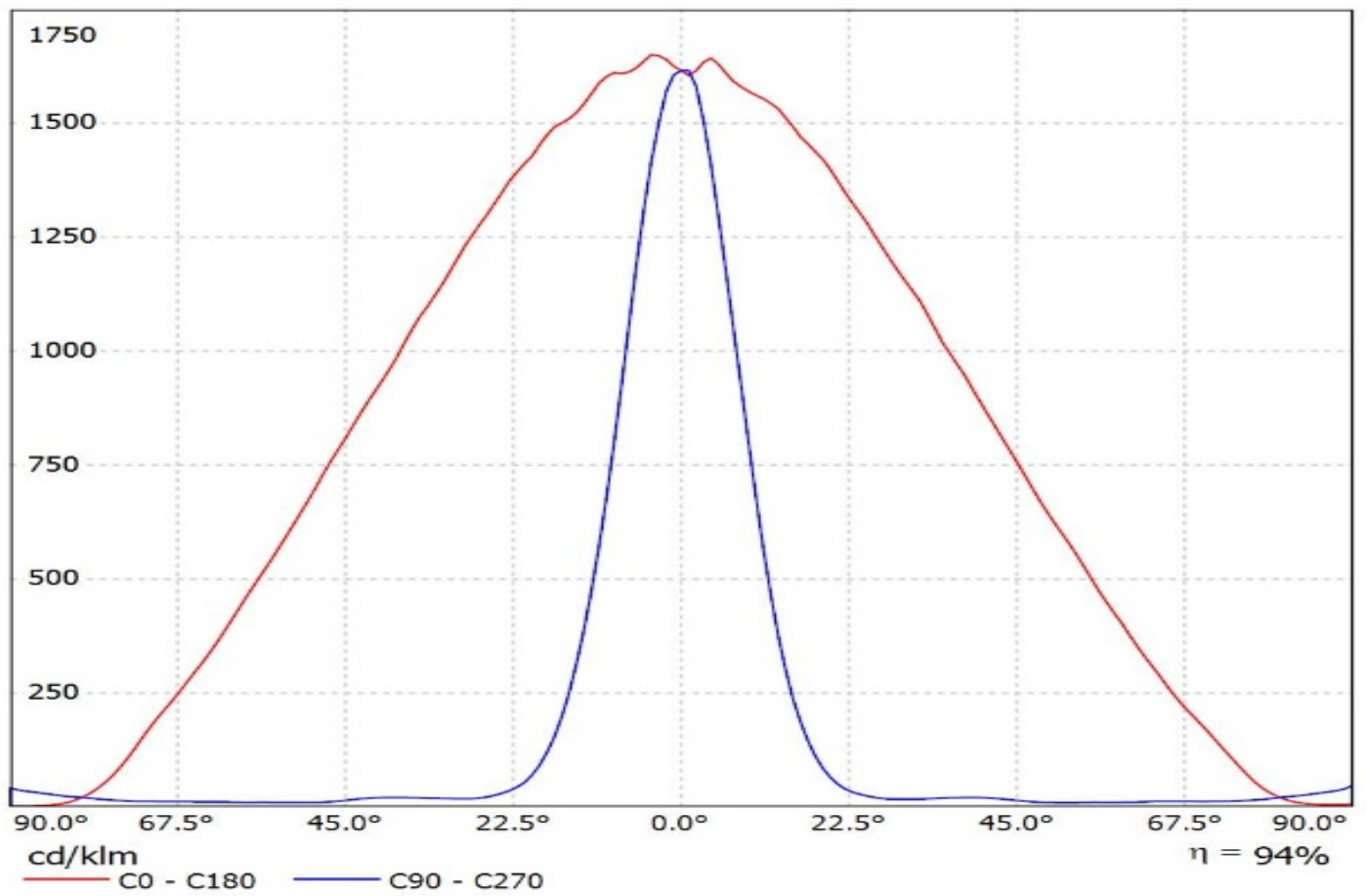
Lamps: 1 x Cree\_XP-L2\_(XPLWT-00-0000-000HU630G)\_115.75lm@250mA\_P=0.721375W\_I=0.25A



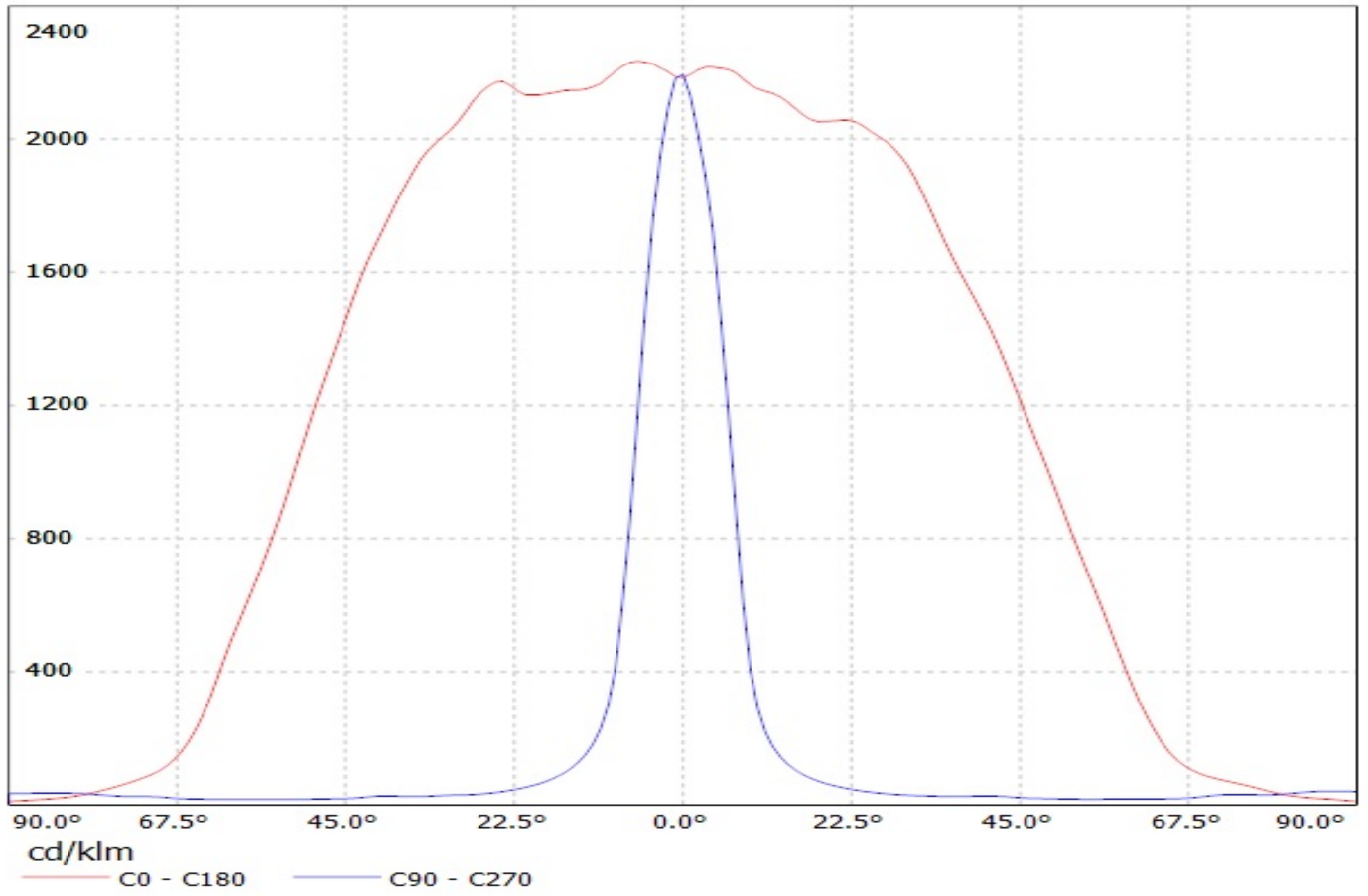
Luminaire: LEDiL Oy CA14367\_FLARE-MAXI-D-TAPE\_(Luxeon\_TX) Eff.93.3%  
Lamps: 1 x Luxeon\_TX\_(L1T2-3585)\_80.1801lm@250mA\_CCT=3500K\_P=0.731482W\_I=249.9mA



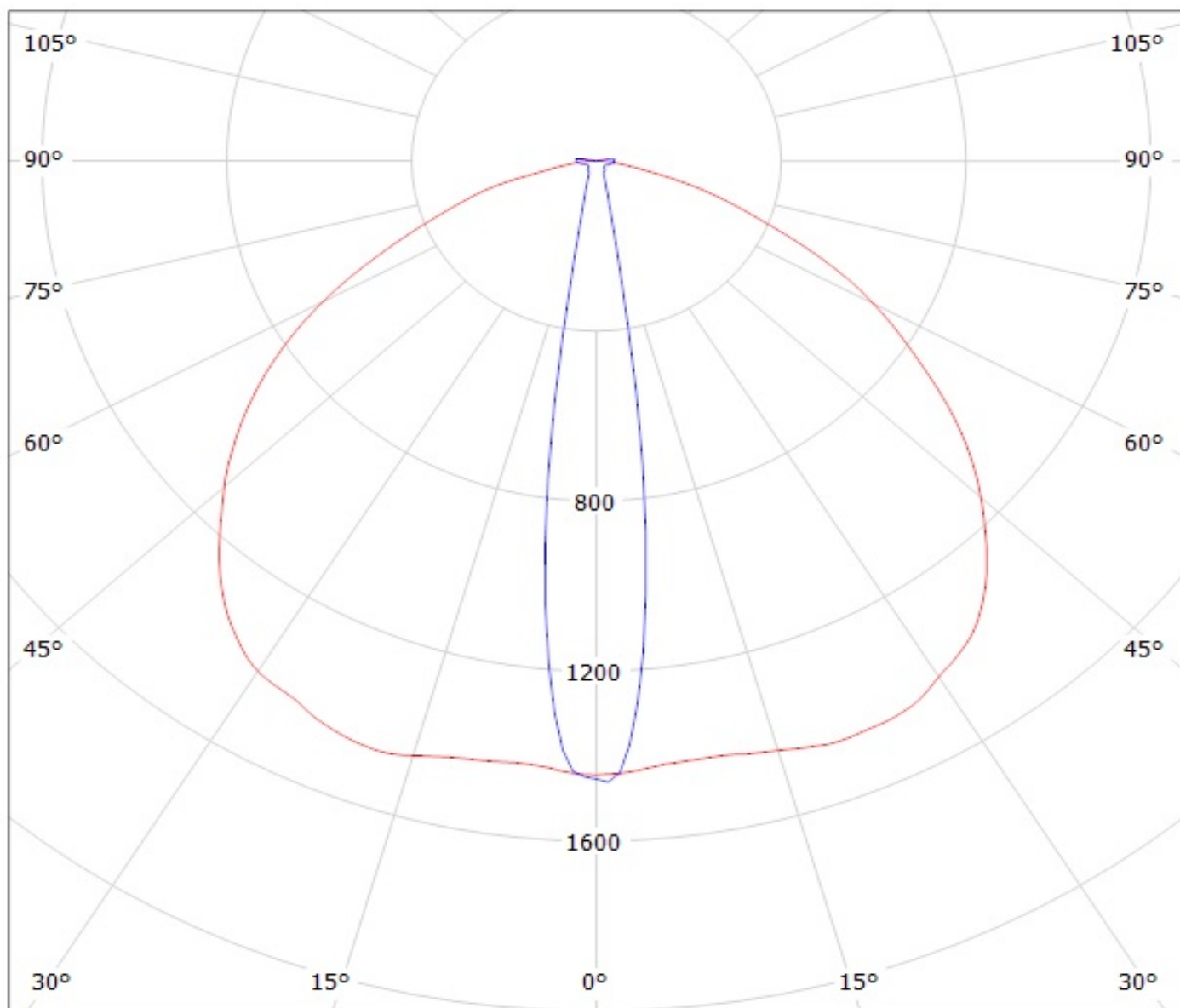
Luminaire: Ledil Oy CA14367\_FLARE-MAXI-D-TAPE\_(Duris\_S10)\_SIMULATED  
Lamps: 1 x Osram Duris S10 (GW P7LM32.EM)



Luminaire: LEDiL Oy CA14367\_FLARE-MAXI-D-TAPE\_(LH351Z) Eff.93.6%  
Lamps: 1 x SAMSUNG\_LH351Z\_90.8111lm@250mA\_P=0.748076W\_I=249.9mA



Luminaire: LEDiL Oy CA14367\_FLARE-MAXI-D-TAPE\_(XP-L)  
Lamps: 1 x Cree\_XP-L\_129.7lm@250mA\_P=0.73723W\_I=249.9mA



cd/klm

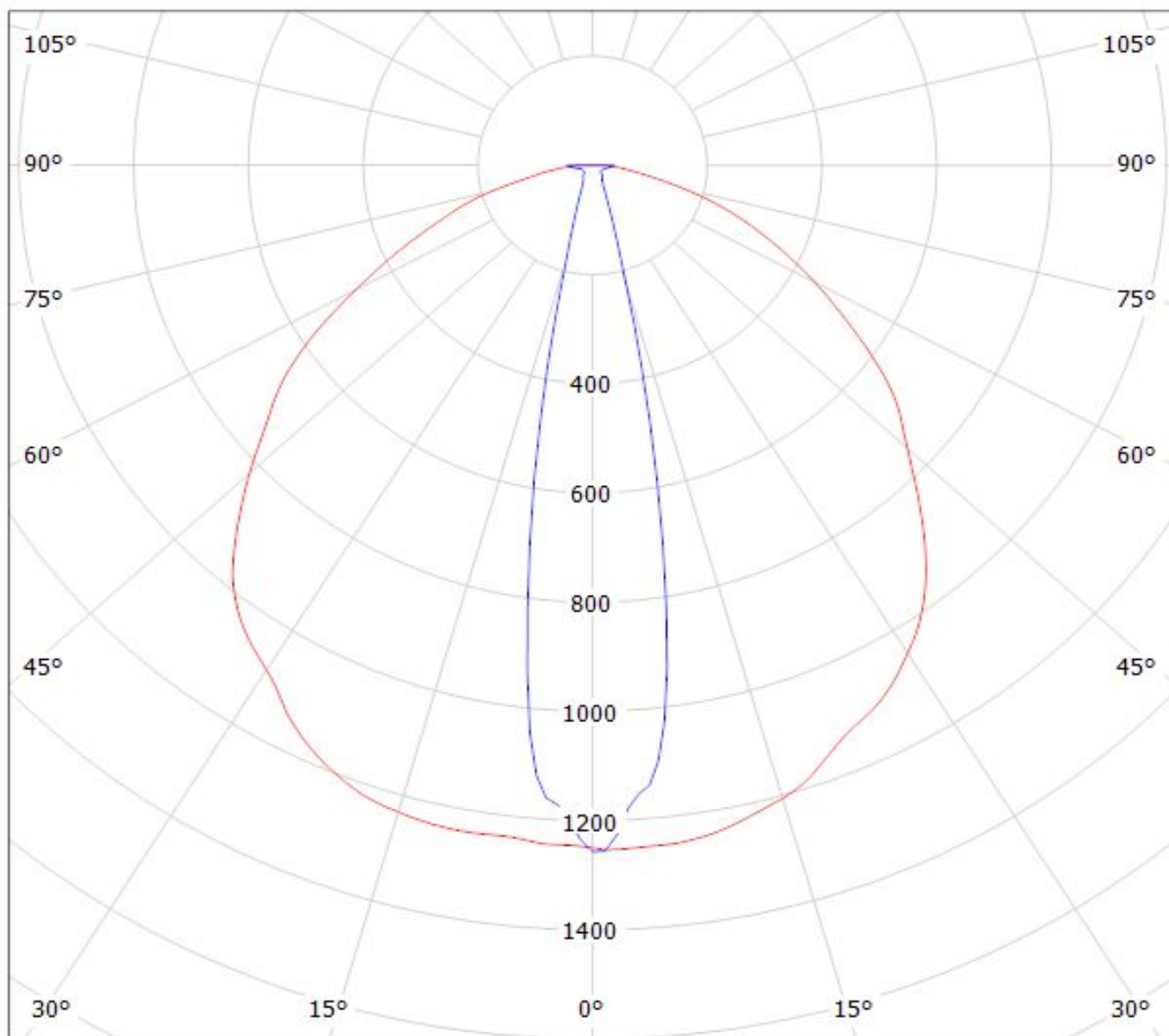
— C0 - C180

— C90 - C270

$\eta = 94\%$

Luminaire: LEDiL Oy CA14367\_FLARE-MAXI-D-TAPE\_(CREE\_XHP50\_COOL\_WHITE)

Lamps: 1 x CREE\_XHP50\_COOL\_WHITE\_242.068lm@250mA\_CCT=COOLWHITE\_I=02499mA\_P=1.42958



cd/klm

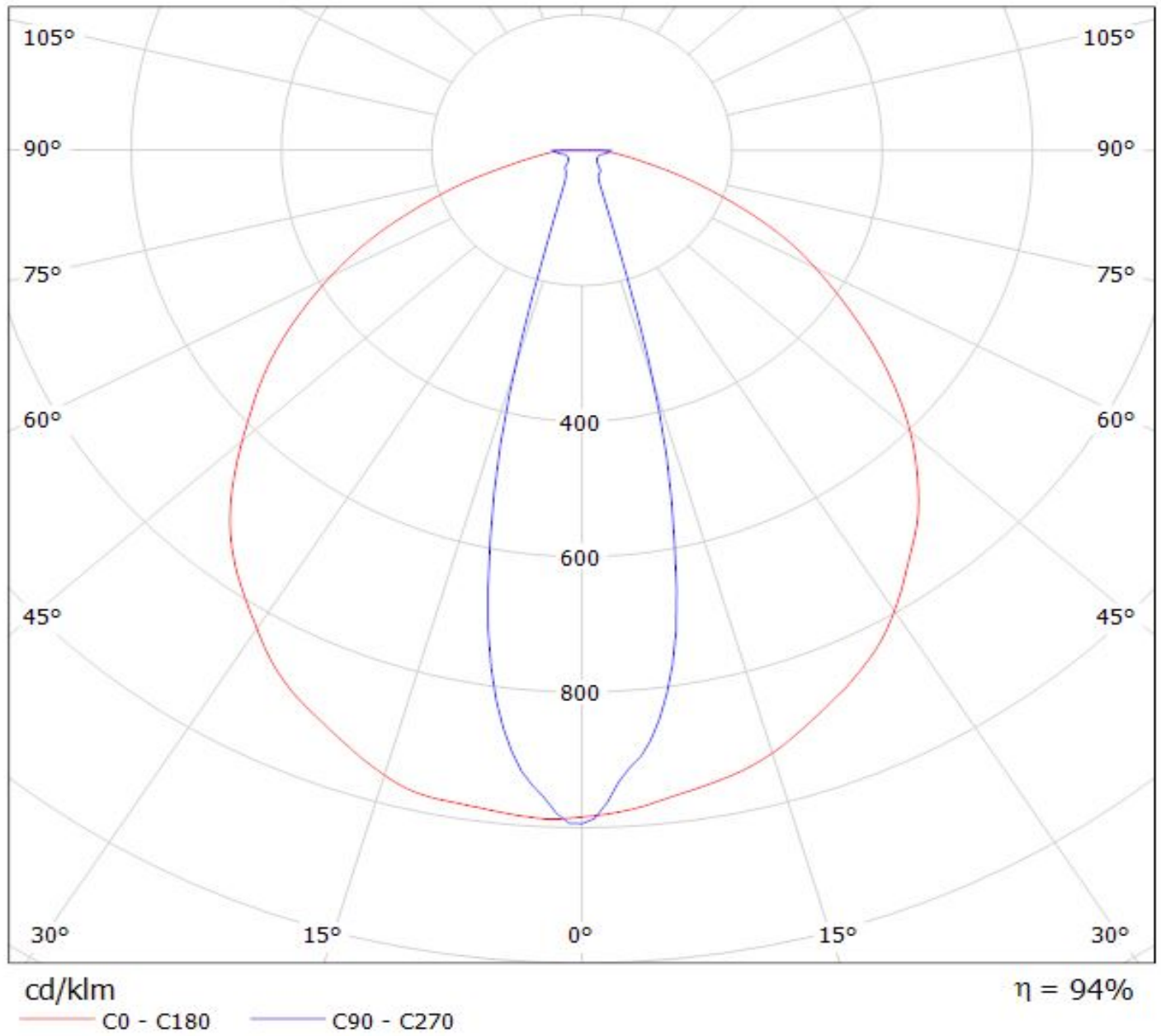
$\eta = 92\%$

— C0 - C180

— C90 - C270

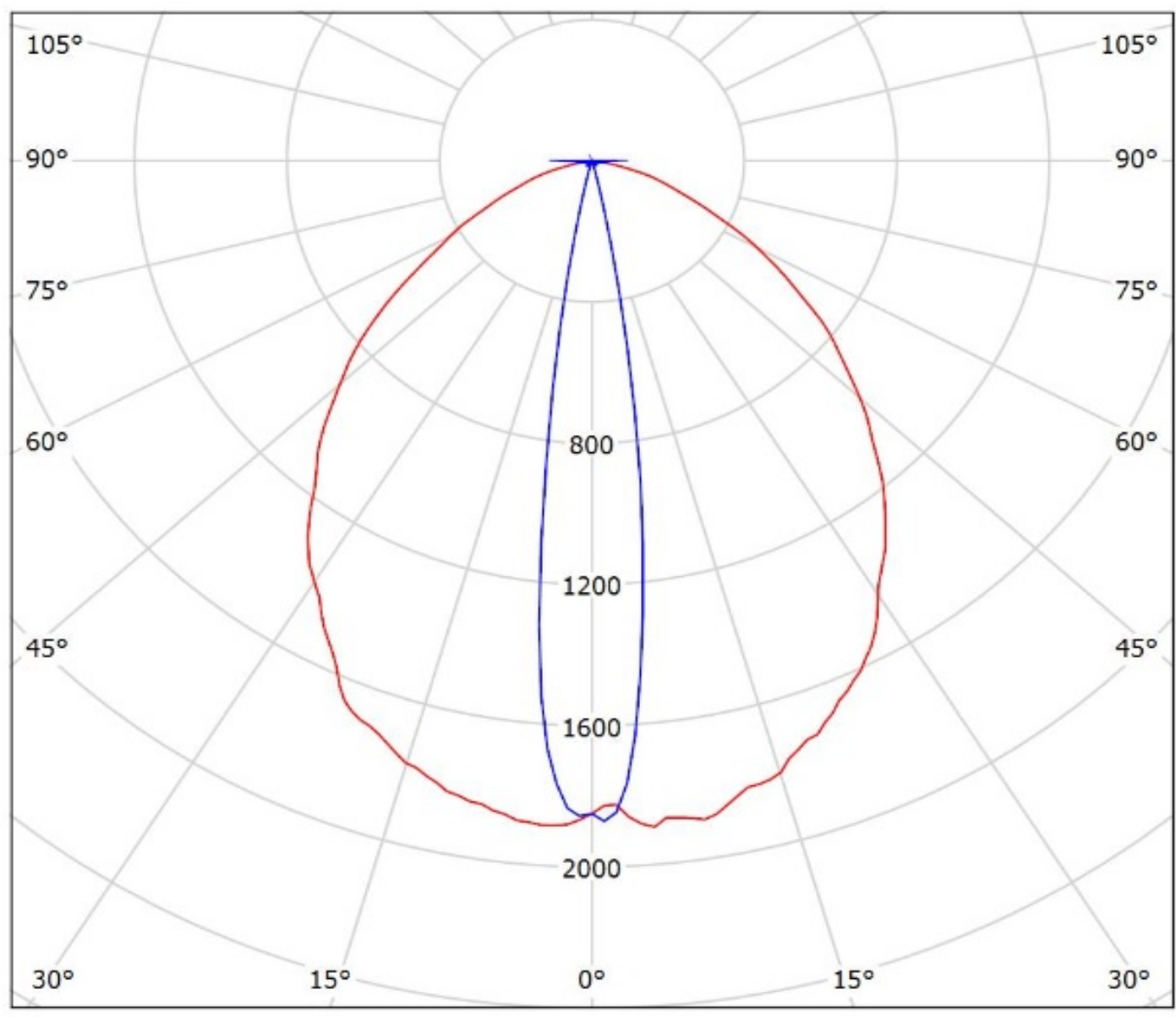


Luminaire: EVERFINE CA14367\_FLARE-MAXI-D-TAPE\_(CREE\_XHP70)  
Lamps: 1 x CREE\_XHP70\_288.639lm@250mA\_P=2.69892W\_I=0.2499A





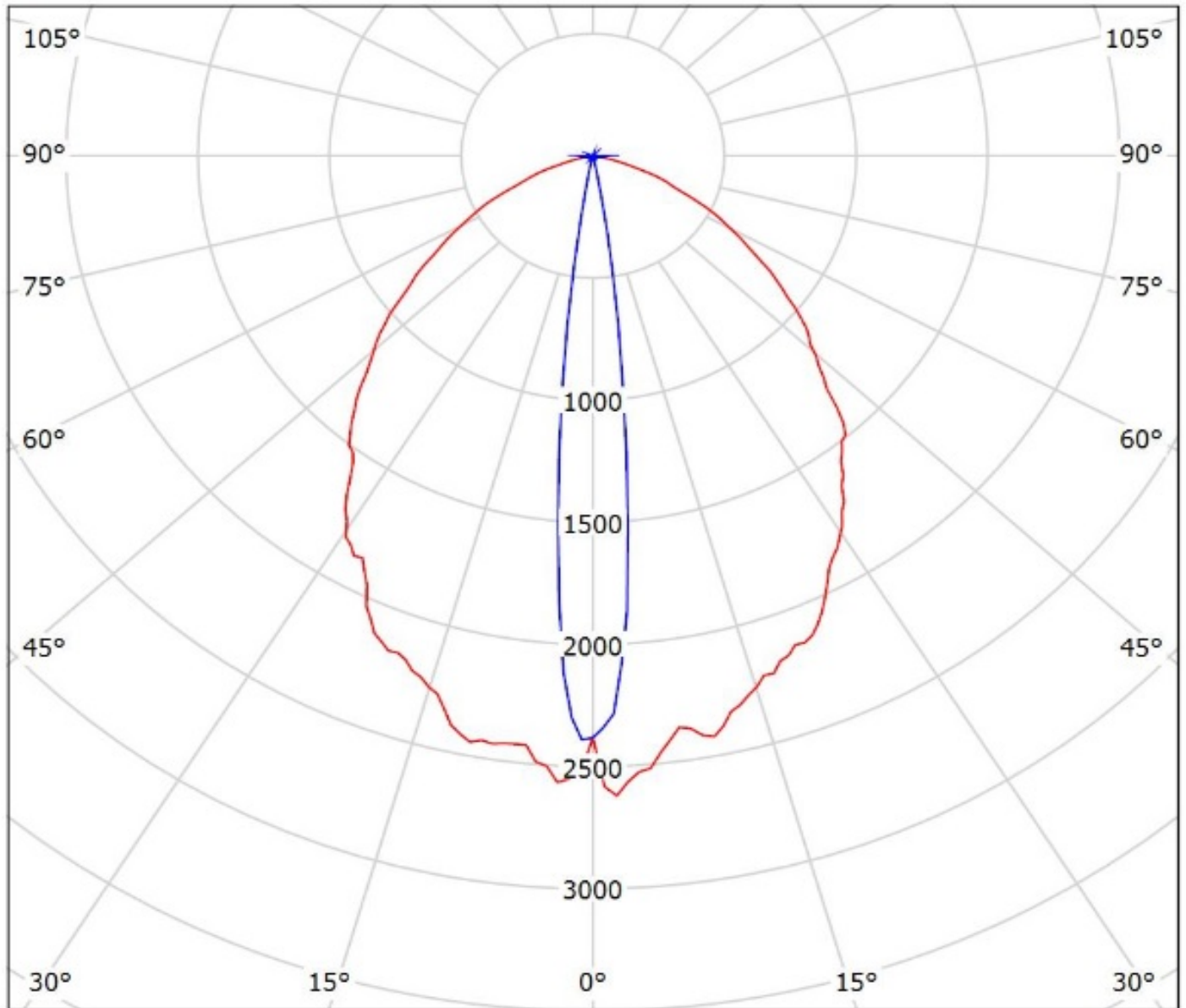
Luminaire: Ledil Oy CA14367\_FLARE-MAXI-D-TAPE\_(XHP35\_HD)\_SIMULATED  
Lamps: 1 x Cree XHP35 HD



cd/klm  
— C0 - C180 — C90 - C270

$\eta = 92\%$

Luminaire: Ledil Oy CA14367\_FLARE-MAXI-D-TAPE\_(XHP35\_HI)\_SIMULATED  
Lamps: 1 x Cree XHP35 HI



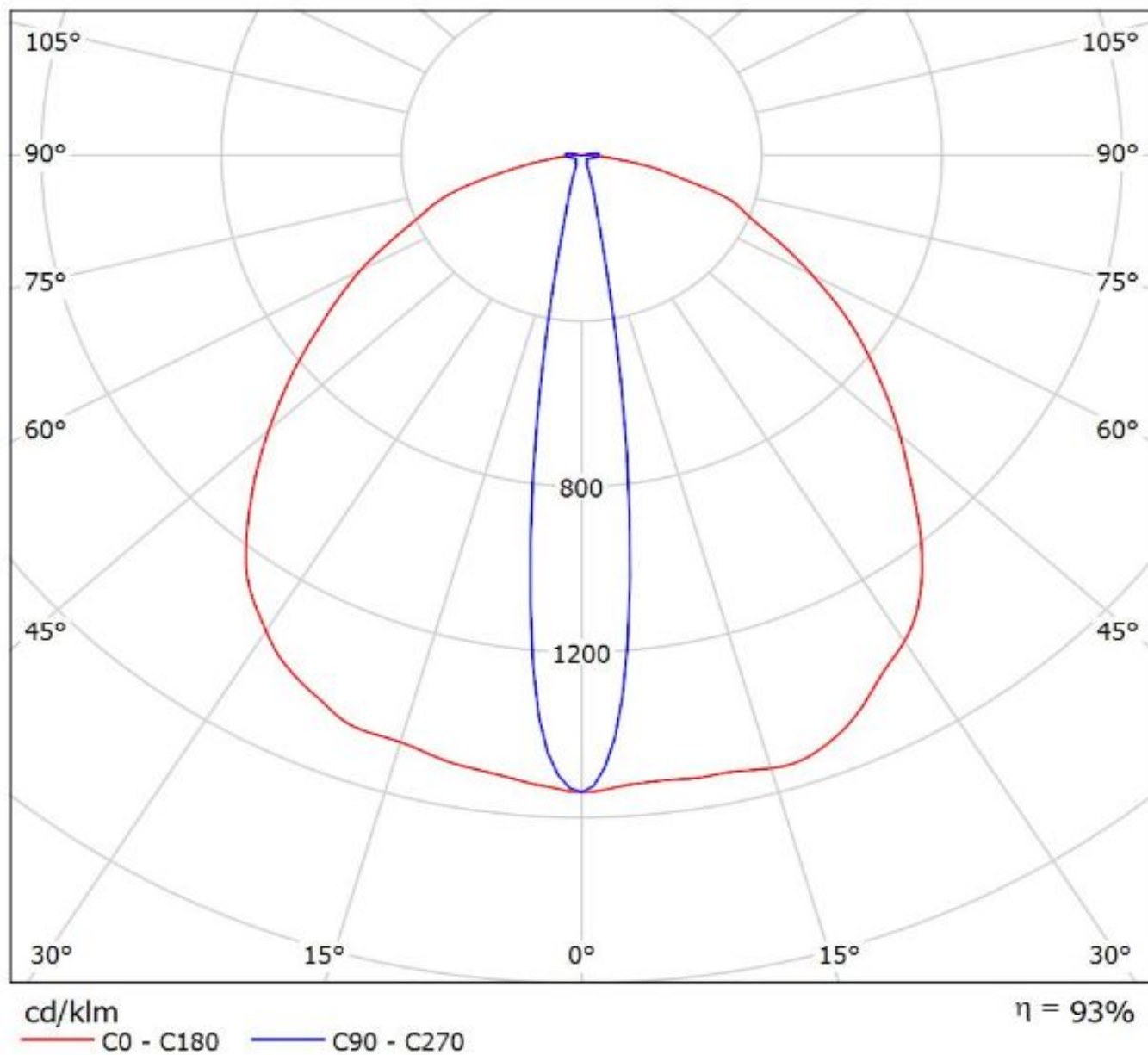
cd/klm

— C0 - C180 — C90 - C270

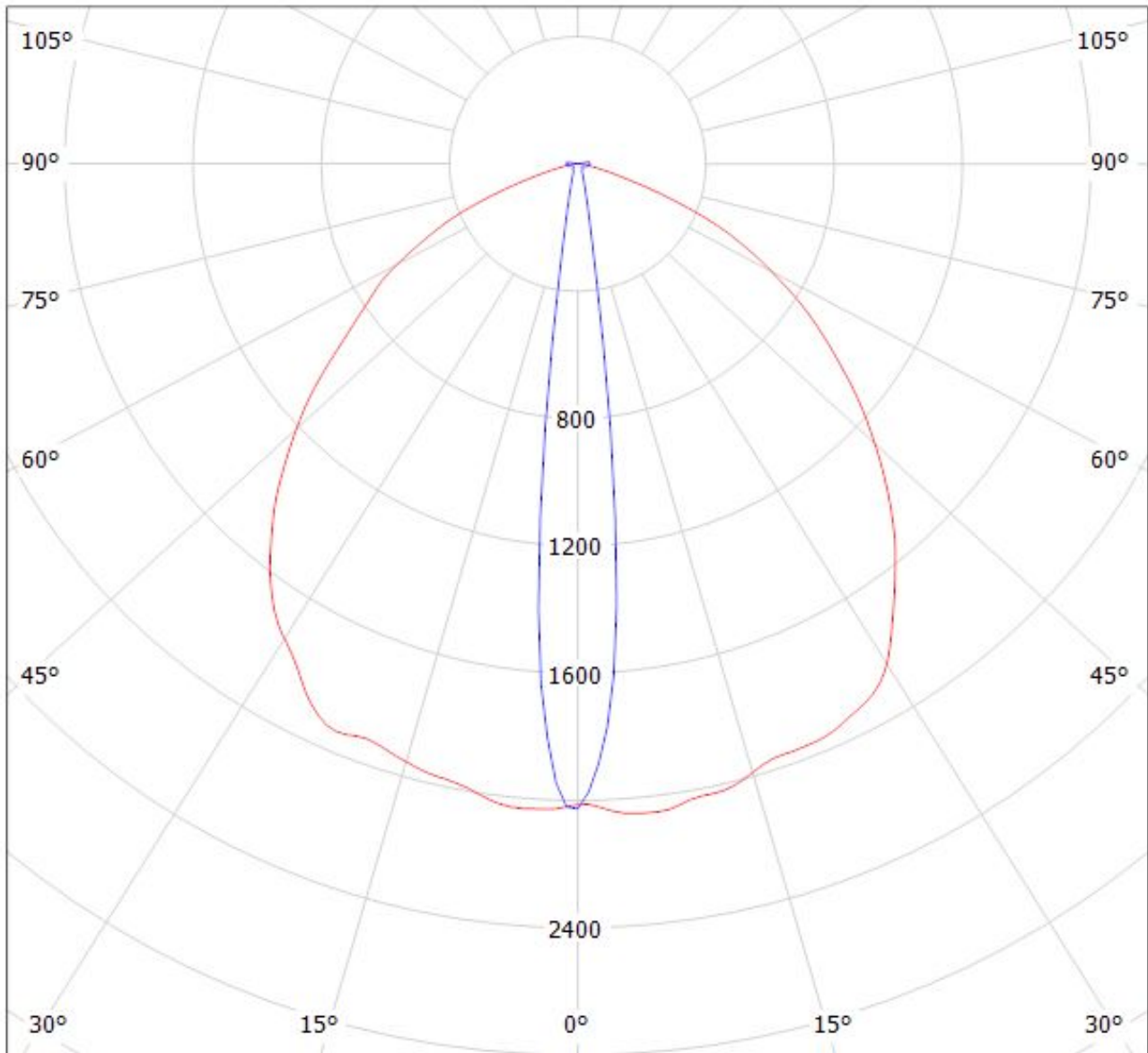
$\eta = 93\%$

Luminaire: Ledil CA14367\_FLARE-MAXI-D-TAPE\_(XP-L2)

Lamps: 1 x Cree\_XP-L2\_(XPLWT-00-0000-000HU630G)\_115.75lm@250mA\_P=0.721375W\_I=0.25A



Luminaire: LEDiL Oy CA14367\_FLARE-MAXI-D-TAPE\_(Luxeon\_TX) Eff.93.3%  
Lamps: 1 x Luxeon\_TX\_(L1T2-3585)\_80.1801lm@250mA\_CCT=3500K\_P=0.731482W\_I=249.9mA

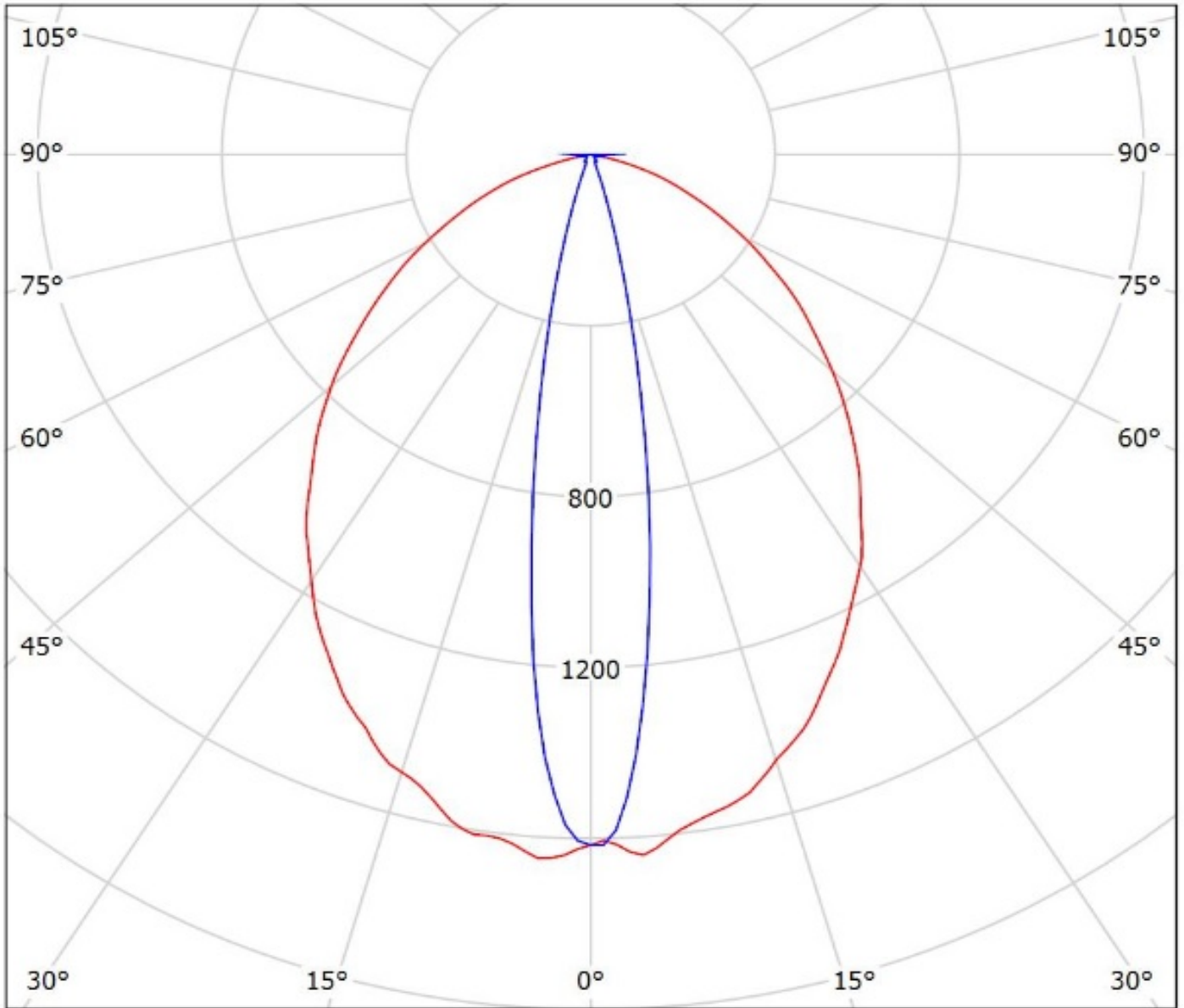


cd/klm

— C0 - C180    — C90 - C270

$\eta = 93\%$

Luminaire: Ledil Oy CA14367\_FLARE-MAXI-D-TAPE\_(Duris\_S10)\_SIMULATED  
Lamps: 1 x Osram Duris S10 (GW P7LM32.EM)

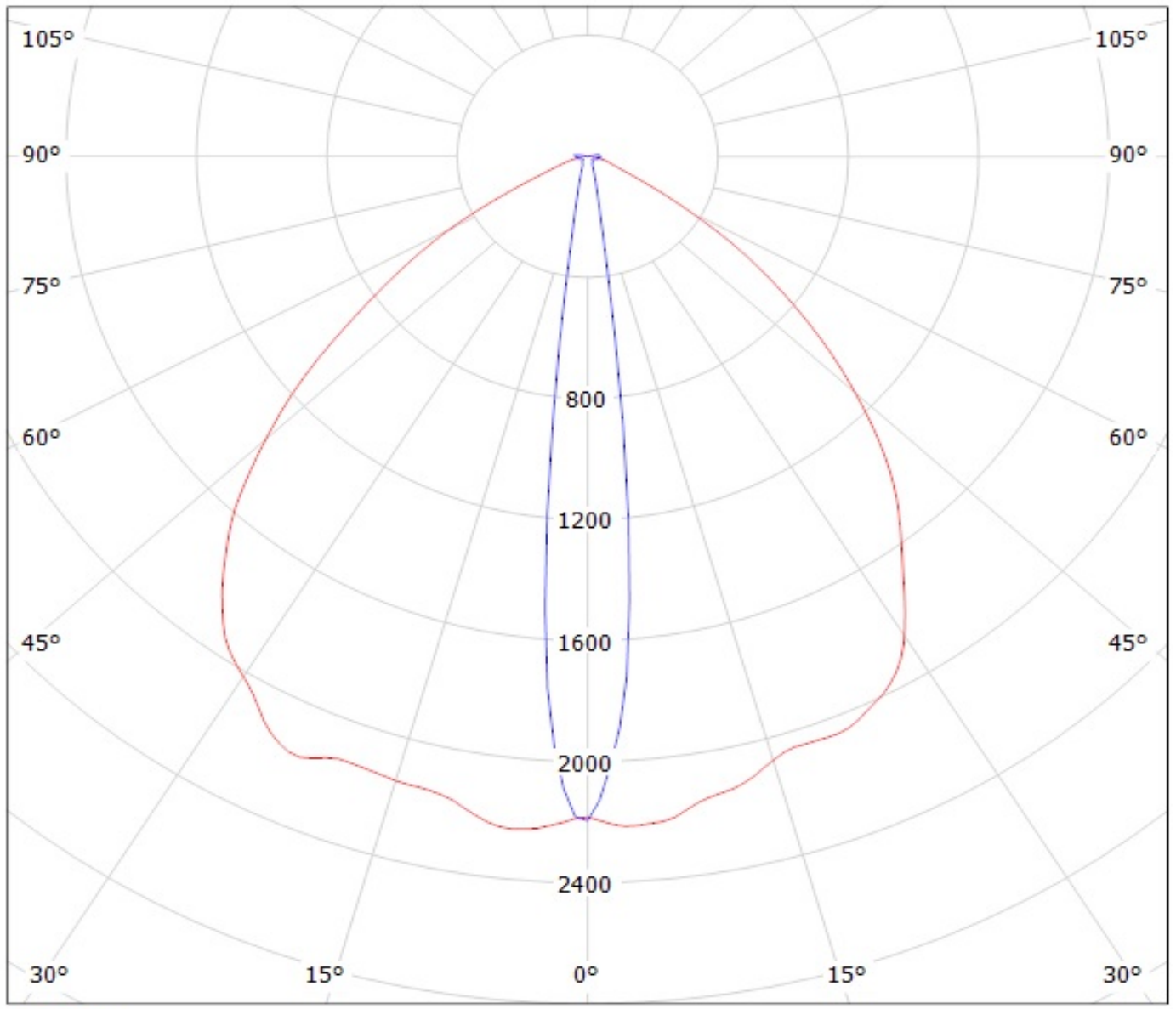


cd/klm

— C0 - C180 — C90 - C270

$\eta = 94\%$

Luminaire: LEDiL Oy CA14367\_FLARE-MAXI-D-TAPE\_(LH351Z) Eff.93.6%  
Lamps: 1 x SAMSUNG\_LH351Z\_90.8111lm@250mA\_P=0.748076W\_I=249.9mA



cd/klm  
— C0 - C180 — C90 - C270



**NOTE: The typical divergence will be changed by different color, chip size and chip position tolerance. The typical total divergence is the full angle measured where the luminous intensity is half of the peak value.**