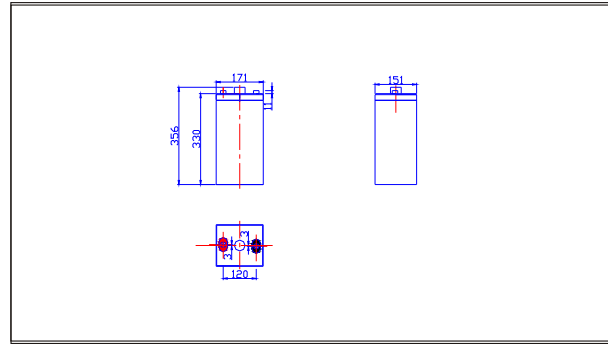




SW22500(2V250AH)



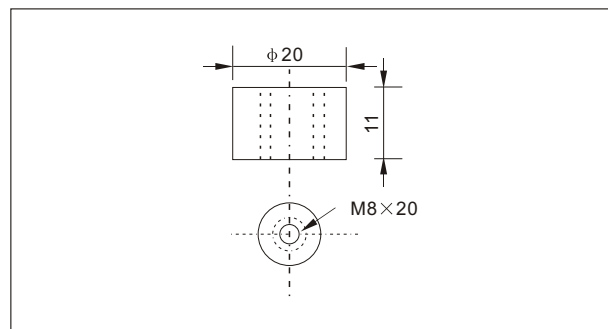
Outer dimensions (mm)



Specifications

Nominal Voltage		2 V
Rated capacity (10 hour rate)		250 Ah
Dimensions	Total Height	356 mm (14.0 inches)
	Height	330 mm (13.0 inches)
	Length	171 mm (6.7 inches)
	Width	151 mm (5.9 inches)
Weight Approx		18 Kg (39.6 lbs)

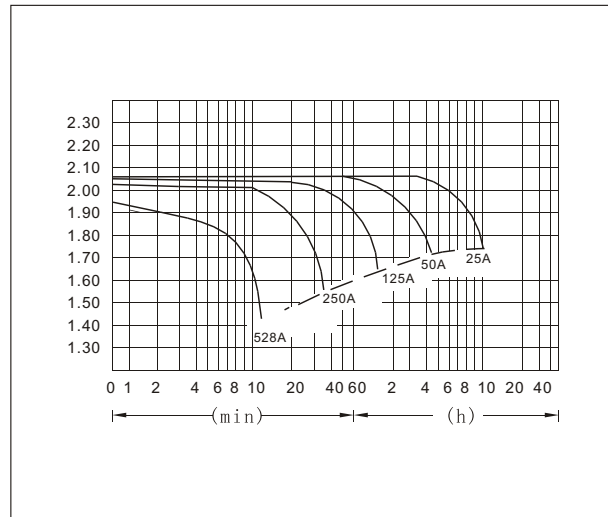
Terminal Type (mm)



Characteristics

Capacity 25°C(77°F)	10 hour rate(25A) 5 hour rate(40A) 1 hour rate(150A)	250 AH 200 AH 150 AH
Internal Resistance	Full charged Battery at 25°C(77°F)	Approx 0.55 mΩ
Capacity affected by Temperature (10hour rate)	40°C(104°F) 25°C(77°F) 0°C(32°F) -15°C(5°F)	102% 100% 85% 65%
Self-Discharge at 25°C(77°F)	Capacity after 3 month storage Capacity after 6 month storage Capacity after 12 month storage	91% 82% 64%
Terminal	T20	
Charge (constant Voltage)	Cycle	Initial Charging Current less than 100 A Voltage 2.35-2.40V
	Float	Voltage 2.25-2.30V

Discharge Curves 25°C(77°F)



Constant Current(Amp) and Constant Power(Watt) Discharge Table at 25°C(77°F)

Time	5min	10min	15min	30min	1h	2h	3h	4h	5h	8h	10h	20h	
1.60V	A	801	528	425	285	150	87.5	64.3	50.0	41.3	29.3	26.3	14
	W	1377	939	760	511	270	160	119.2	93.8	78.2	55.9	50.5	27
1.70V	A	776	476	401	273	141	83.5	62.5	48.8	40.5	28.5	25.8	13.8
	W	1380	886	747	510	266	160	120.6	94.5	78.7	55.6	50.4	26.9
1.75V	A	750	426	350	255	137	81.5	61.0	48.0	40.0	28.3	25.3	13.8
	W	1365	807	666	489	263	158	118.5	93.6	78.2	55.4	49.8	27.1
1.80V	A	723	401	326	235	132	79.5	59.5	47.3	39.0	27.5	25.0	13.5
	W	1352	771	625	454	256	155	116.9	93.0	76.8	54.3	49.5	26.8
1.85V	A	699	376	301	210	128	77.5	57.5	46.0	38.0	26.8	23.8	12.8
	W	1321	726	583	410	250	153	113.9	91.3	75.6	53.4	47.8	25.8