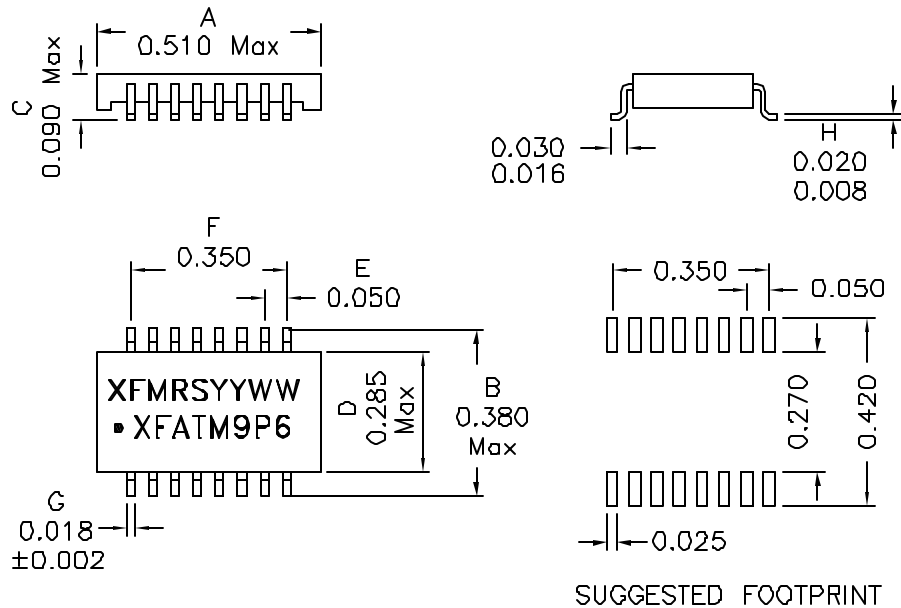
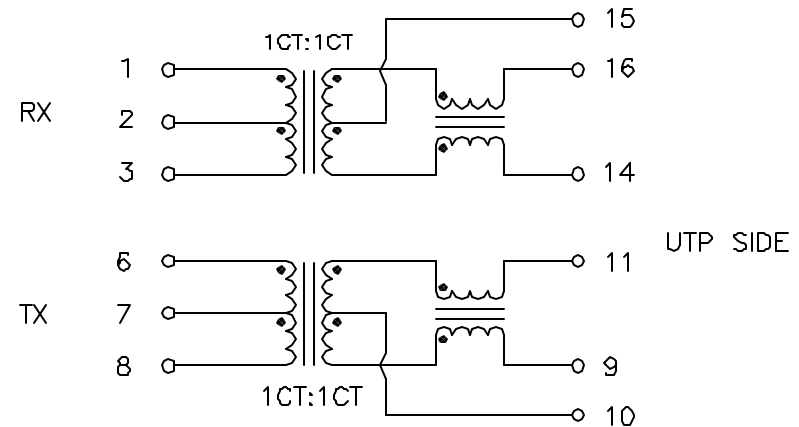


1. Mechanical Dimensions:



2. Schematic:



3. Electrical Specifications: @25°

Turns Ratio: TX : 1CT:1CT $\pm 2\%$ RX : 1CT:1CT $\pm 2\%$

Isolation Voltage: 1500 VAC (Input to Output)

OCL: Pins 1-3, 6-8 350uH Minimum @100KHz,100mV

Cw/w: Pins 1-16 20pF Max @100KHz,100mV

Pins 6-11 20pF Max @100KHz,100mV

LL: Pins 1-3 0.40uH Max @100KHz,100mV,short Pins 16+15+14

Pins 6-8 0.40uH Max @100KHz,100mV,short Pins 11+10+9

DCR: Pins 1-3,6-8 0.90 Ohms Max

Insertion Loss: -1.1dB Max 0.3-100MHz

Return Loss: -18dB Min 0.3-100MHz

-15.5dB Min 40MHz

-13.5dB Min 50MHz

-10dB Min 60-80MHz

Crosstalk: -38dB Min 0.3-100MHz

DCMR: -33dB Min 0.3-60MHz

-26dB Min 60-100MHz

Notes:

- Solderability: Leads shall meet MIL-STD-202C, Method 208H for solderability.
- Flammability: UL94V-0
- ASTM oxygen index: > 28%
- Insulation System: Class F 155°C, UL file E151556
- Operating Temperature Range: All listed parameters are to be within tolerance from 0°C to +80°C
- Storage Temperature Range: -25°C to +125°C
- Aqueous wash compatible
- SMD Lead Coplanarity: $\pm 0.004^{\circ}$ (0.102mm)
- Electrical and mechanical specifications 100% tested
- RoHS Compliant Component

DOC. REV. A/3

PROPRIETARY Document is the property of XFMRs Group & is not allowed to be duplicated without authorization.

XFMRs Inc. www.XFMRs.com		Title: 10/100BASE-TX MAGNETICS	
UNLESS OTHERWISE SPECIFIED		P/N: XFATM9P6 REV. A	
TOLERANCES: .xxx ± 0.010		DWN.	Mei Chen Sep-09-10
Dimensions in Inch		CHK.	YK Liao Sep-09-10
SHEET 1 OF 1		APP.	Joe Huff Sep-09-10