



Micro Commercial Components



Micro Commercial Components
 20736 Marilla Street Chatsworth
 CA 91311
 Phone: (818) 701-4933
 Fax: (818) 701-4939

MC7915CT

Three-Terminal Positive Voltage Regulators

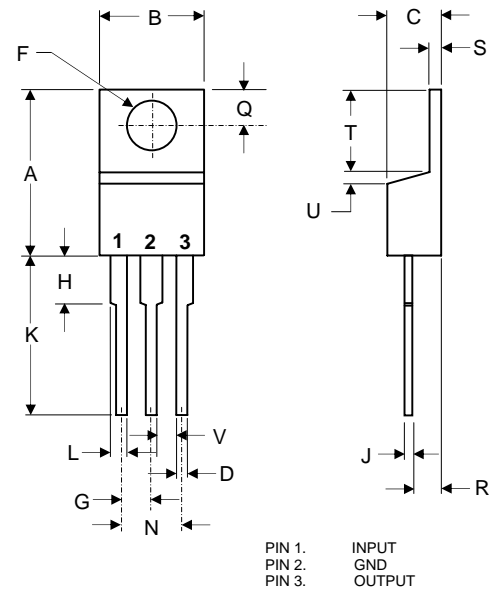
Features

- Mounting Torque: 5 in-lbs Maximum
- Lead Free Finish/RoHS Compliant(Note 1) ("P" Suffix designates RoHS Compliant. See ordering information)
- Output current in excess of 1.5 Ampere
- Epoxy meets UL 94 V-0 flammability rating
- Moisture Sensitivity Level 1
- Halogen free available upon request by adding suffix "-HF"

Maximum Ratings @ T_A=25°C, Unless Otherwise Noted

Parameter	Symbol	Value	Unit
Input Voltage	V _i	-35	V
Power Dissipation	P _D	1.5(T _a =25°C) 15(T _c =25°C)	W
Thermal resistance junction-air	R _{θJA}	83.3	°C/W
Thermal resistance junction-cases	R _{θJC}	8.33	°C/W
Operating Junction Temperature	T _{OPR}	0---+150	°C
Storage Temperature Range	T _{STG}	-55---+150	°C

TO-220



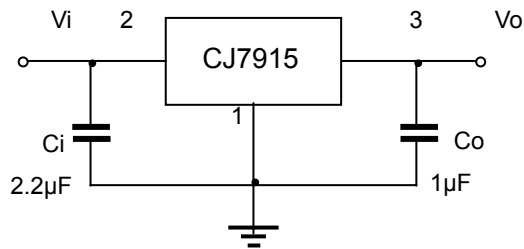
DIM	DIMENSIONS				NOTE
	INCHES		MM		
	MIN	MAX	MIN	MAX	
A	.560	.625	14.22	15.88	
B	.380	.420	9.65	10.67	
C	.140	.190	3.56	4.82	
D	.020	.045	0.51	1.14	
F	.139	.161	3.53	4.09	∅
G	.190	.110	2.29	2.79	
H	---	.250	---	6.35	
J	.012	.025	0.30	0.64	
K	.500	.580	12.70	14.73	
L	.045	.060	1.14	1.52	
N	.190	.210	4.83	5.33	
Q	.100	.135	2.54	3.43	
R	.080	.115	2.04	2.92	
S	.045	.055	1.14	1.39	
T	.230	.270	5.84	6.86	
U	----	.050	----	1.27	
V	.045	----	1.15	----	

MC7915CT

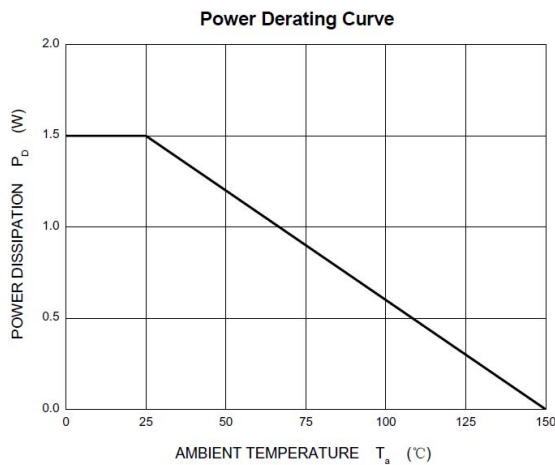
Electrical Characteristics ($V_i = -23V$, $I_o = 500mA$, $C_i = 2.2\mu F$, $C_o = 1\mu F$, unless otherwise specified)

Parameter	Symbol	Test conditions	Min	Typ	Max	Unit	
Output voltage	V_o		25°C	-14.4	-15	-15.6	V
		$-17.5V \leq V_i \leq -30V$, $I_o = 5mA-1A$, $P \leq 15W$	0-125°C	-14.25	-15	-15.75	V
Load regulation	ΔV_o	$I_o = 5mA-1.5A$	25°C		15	200	mV
		$I_o = 250mA-750mA$	25°C		5	75	mV
Line regulation	ΔV_o	$-17.5V \leq V_i \leq -30V$	25°C		5	100	mV
		$-20V \leq V_i \leq -26V$	25°C		3	50	mV
Quiescent current	I_q		25°C		2	3	mA
Quiescent current change	ΔI_q	$-17.5V \leq V_i \leq -30V$	0-125°C			0.5	mA
	ΔI_q	$5mA \leq I_o \leq 1A$	0-125°C			0.5	mA
Output noise voltage	V_N	$10Hz \leq f \leq 100KHz$	25°C		375		μV
Output voltage drift	$\Delta V_o / \Delta T$	$I_o = 5mA$	0-125°C		-1		$mV/^\circ C$
Ripple rejection	RR	$-18.5V \leq V_i \leq -28.5V$, $f = 120Hz$	0-125°C	54	60		dB
Dropout voltage	V_d	$I_o = 1A$	25°C		1.1		V
Peak current	I_{pk}		25°C		2.1		A

TYPICAL APPLICATION

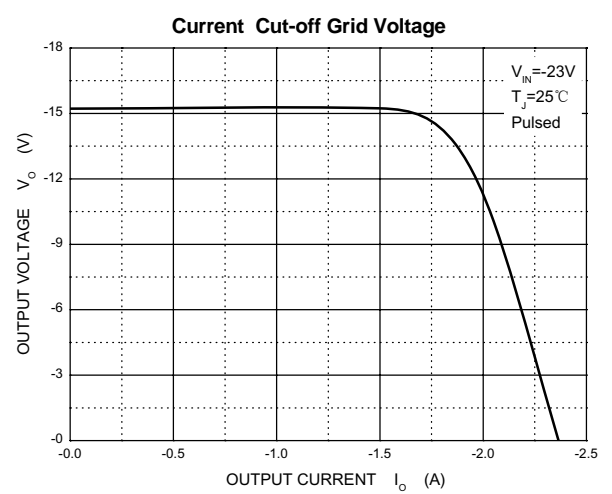
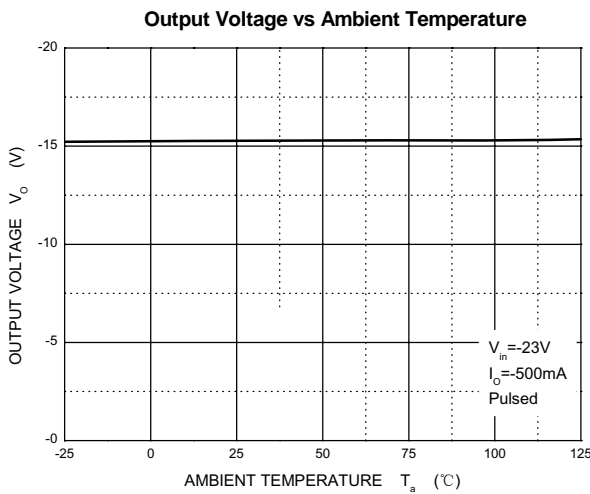
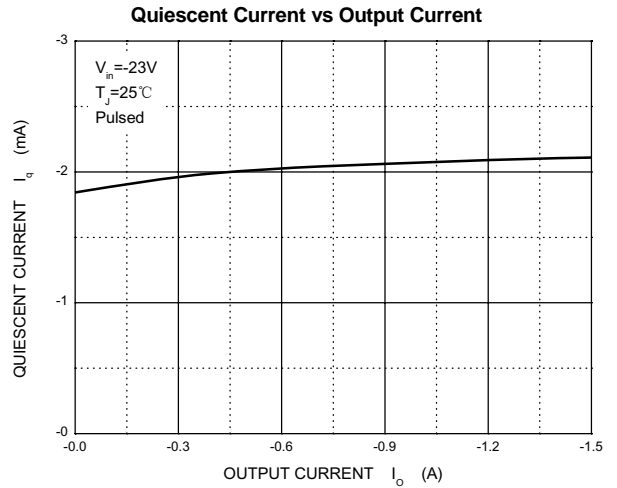
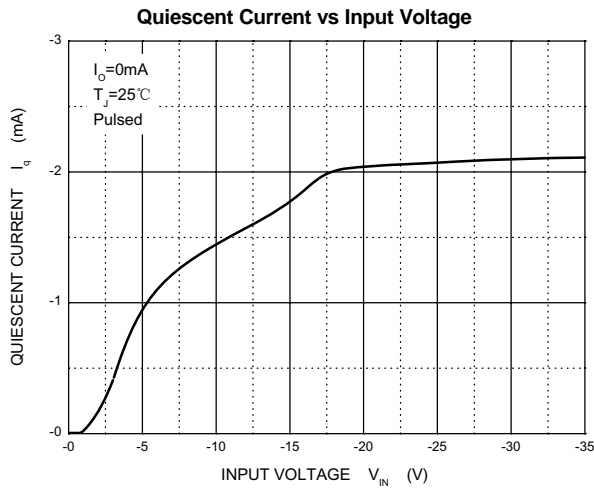
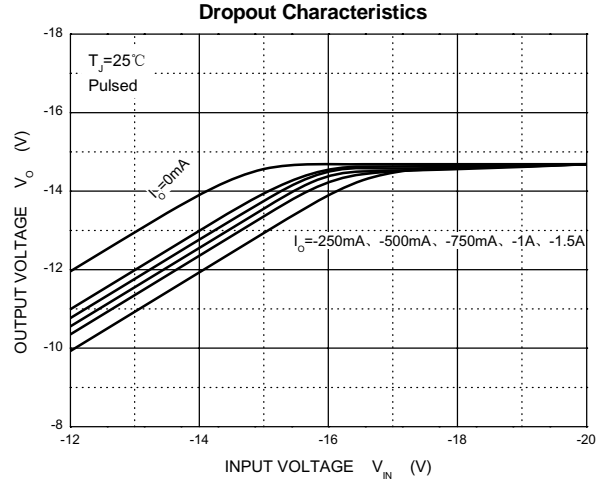
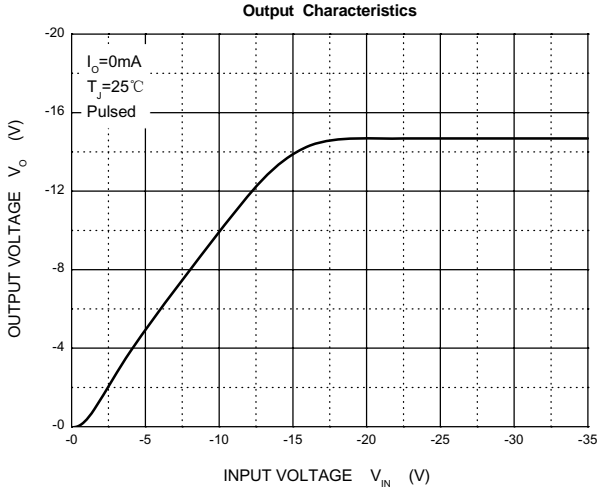


Typical Characteristics



MC7915CT

Typical Characteristics





Micro Commercial Components

Ordering Information :

Device	Packing
Part Number-BP	Bulk; 1Kpcs/Box

Note : Adding "-HF" suffix for halogen free, eg. Part Number-BP-HF

IMPORTANT NOTICE

Micro Commercial Components Corp. reserves the right to make changes without further notice to any product herein to make corrections, modifications, enhancements, improvements, or other changes. **Micro Commercial Components Corp.** does not assume any liability arising out of the application or use of any product described herein; neither does it convey any license under its patent rights, nor the rights of others. The user of products in such applications shall assume all risks of such use and will agree to hold **Micro Commercial Components Corp.** and all the companies whose products are represented on our website, harmless against all damages.

LIFE SUPPORT

MCC's products are not authorized for use as critical components in life support devices or systems without the express written approval of Micro Commercial Components Corporation.

CUSTOMER AWARENESS

Counterfeiting of semiconductor parts is a growing problem in the industry. Micro Commercial Components (MCC) is taking strong measures to protect ourselves and our customers from the proliferation of counterfeit parts. MCC strongly encourages customers to purchase MCC parts either directly from MCC or from Authorized MCC Distributors who are listed by country on our web page cited below. Products customers buy either from MCC directly or from Authorized MCC Distributors are genuine parts, have full traceability, meet MCC's quality standards for handling and storage. **MCC will not provide any warranty coverage or other assistance for parts bought from Unauthorized Sources.** MCC is committed to combat this global problem and encourage our customers to do their part in stopping this practice by buying direct or from authorized distributors.

www.mccsemi.com