

VOLTAGE RANGE: 200 --- 600 V

CURRENT: 1.5 A



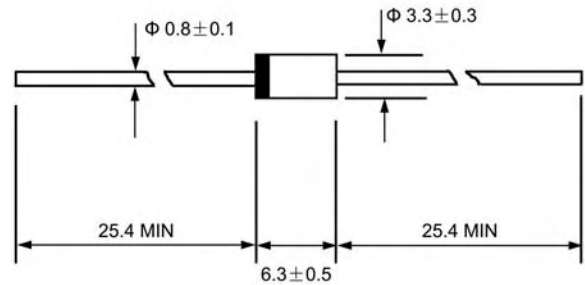
Features

- ◇ Low cost
- ◇ Diffused junction
- ◇ Low leakage
- ◇ Low forward voltage drop
- ◇ High current capability
- ◇ Easily cleaned with Freon, Alcohol, Isopropanol and similar solvents

Mechanical Data

- ◇ Case: JEDEC DO-15, molded plastic
- ◇ Polarity: Color band denotes cathode
- ◇ Weight: 0.014 ounces, 0.39 grams
- ◇ Mounting position: Any

DO - 15



Dimensions in millimeters

MAXIMUM RATINGS AND ELECTRICAL CHARACTERISTICS

Ratings at 25°C ambient temperature unless otherwise specified.

Single phase, half wave, 50Hz, resistive or inductive load. For capacitive load, derate by 20%.

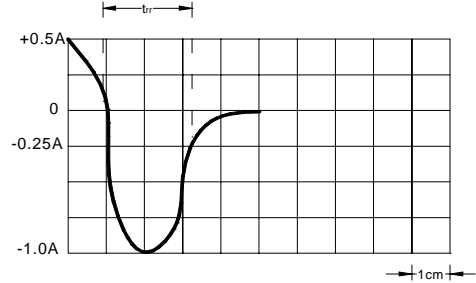
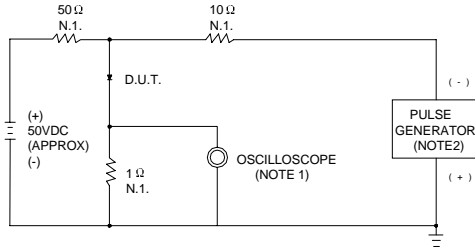
		BYV95A	BYV95B	BYV95C	UNITS
Maximum recurrent peak reverse voltage	V_{RRM}	200	400	600	V
Maximum RMS voltage	V_{RMS}	140	280	420	V
Maximum DC blocking voltage	V_{DC}	200	200	600	V
Maximum average forward rectified current 9.5mm lead length, @ $T_A=75^\circ\text{C}$	$I_{F(AV)}$	1.5			A
Peak forward surge current 10ms single half-sine-wave superimposed on rated load @ $T_J=125^\circ\text{C}$	I_{FSM}	50.0			A
Maximum instantaneous forward voltage @ 3.0A	V_F	1.6			V
Maximum reverse current @ $T_A=25^\circ\text{C}$ at rated DC blocking voltage @ $T_A=100^\circ\text{C}$	I_R	5.0 100.0			μA
Maximum reverse recovery time (Note1)	t_{rr}	250			ns
Typical junction capacitance (Note2)	C_J	18			pF
Typical thermal resistance (Note3)	$R_{\theta JA}$	45			$^\circ\text{C}/\text{W}$
Operating junction temperature range	T_J	-55 --- + 150			$^\circ\text{C}$
Storage temperature range	T_{STG}	-55 --- + 150			$^\circ\text{C}$

NOTE:1. Measured with $I_F=0.5\text{A}$, $I_R=1\text{A}$, $I_{rr}=0.25\text{A}$.

2. Measured at 1.0MHz and applied reverse voltage of 4.0V DC.

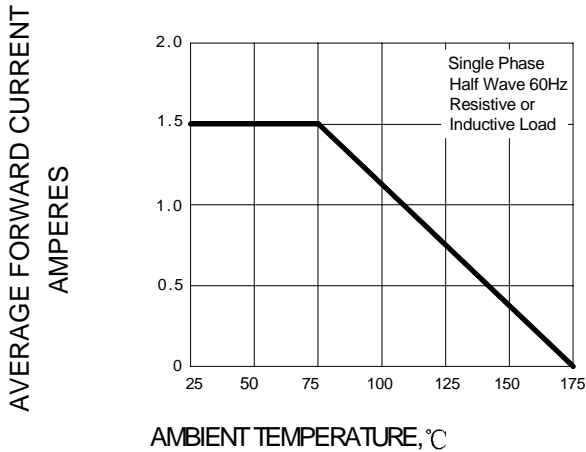
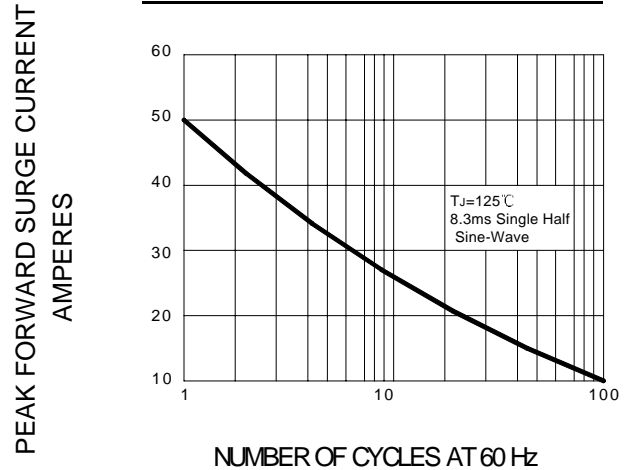
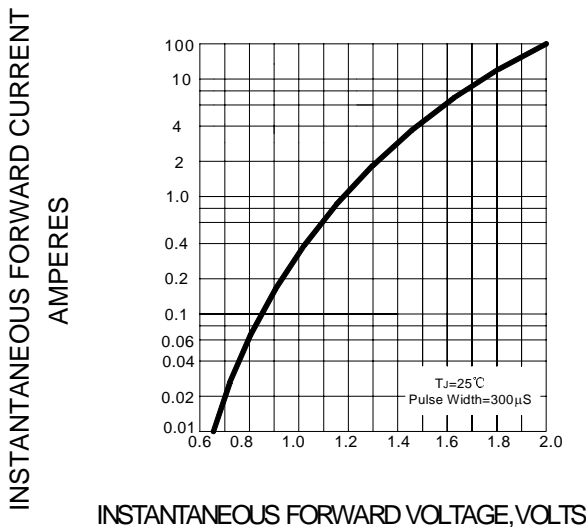
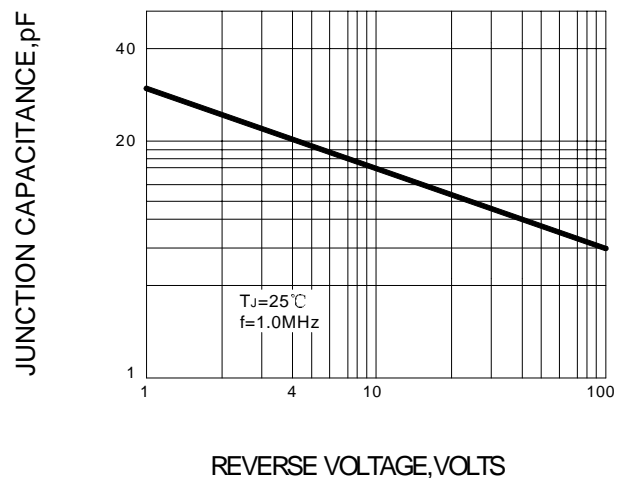
3. Thermal resistance from junction to ambient.

Ratings AND Characteristic Curves

FIG.1 – REVERSE RECOVERY TIME CHARACTERISTIC AND TEST CIRCUIT DIAGRAM


NOTES:1.RISE TIME=7ns MAX. INPUT IMPEDANCE=1MΩ,22pF
2.RISE TIME=10ns MAX. SOURCE IMPEDANCE=50Ω

SET TIME BASE FOR 50/100 ns /cm

FIG.2 – FORWARD DERATING CURVE

FIG.3 – PEAK FORWARD SURGE CURRENT

FIG.4 – TYPICAL FORWARD CHARACTERISTIC

FIG.5 – TYPICAL JUNCTION CAPACITANCE


PACKAGE	SPQ/PCS	CARTON SPQ/PCS	CARTON SIZE/CM	CARTON GW/KG	CARTON NW/KG
DO-15	3000/AMMO	30000	42X28X31	12.00	10.00

Download from alldatasheet