

# Solid-state relay module - RIF-0-OSC-24DC/230AC/1 - 2905656


Please be informed that the data shown in this PDF Document is generated from our Online Catalog. Please find the complete data in the user's documentation. Our General Terms of Use for Downloads are valid (<http://phoenixcontact.com/download>)



Pre-assembled solid-state relay module with screw connection, consisting of: relay base with ejector and plug-in miniature solid-state relay. Input voltage: 24 V DC. Output: 24 - 253 V AC/0.75 A



## Key Commercial Data

|              |   |
|--------------|---|
| Packing unit | 10 STK  |
| GTIN         | <br>4 046356 983518 |
| GTIN         | 4046356983518   |

## Technical data

### Note

|                         |   |
|-------------------------|---|
| Utilization restriction | EMC: class A product, see manufacturer's declaration in the download area |
|-------------------------|---|

### Dimensions

|        |        |
|--------|--------|
| Width  | 6.2 mm |
| Height | 84 mm  |
| Depth  | 68 mm  |

### Ambient conditions

|   |                  |
|---|------------------|
| Ambient temperature (operation)         | -25 °C ... 60 °C |
| Ambient temperature (storage/transport) | -40 °C ... 85 °C |

### Coil side

|   |        |
|---|--------|
| Power dissipation for nominal condition | 0.19 W |
|---|--------|

### Connection data input side

|                               |   |
|-------------------------------|---|
| Connection name               | Coil side                                 |
| Connection method             | Screw connection                          |
| Stripping length              | 7 mm                                      |
| Conductor cross section solid | 0.5 mm <sup>2</sup> ... 4 mm <sup>2</sup> |

# Solid-state relay module - RIF-0-OSC-24DC/230AC/1 - 2905656

## Technical data

### Connection data input side

|   |   |
|---|---|
| Conductor cross-section solid (2 conductors with same cross section)    | 0.5 mm <sup>2</sup> ... 1.5 mm <sup>2</sup>                                   |
| Conductor cross section flexible  | 0.5 mm <sup>2</sup> ... 2.5 mm <sup>2</sup>                                   |
|   | 0.5 mm <sup>2</sup> ... 2.5 mm <sup>2</sup> (Ferrules without plastic sleeve) |
|   | 0.5 mm <sup>2</sup> ... 1.5 mm <sup>2</sup> (Ferrule with plastic sleeve)     |
| Conductor cross section flexible (2 conductors with same cross section) | 0.5 mm <sup>2</sup> ... 1.5 mm <sup>2</sup>                                   |
|   | 0.5 mm <sup>2</sup> ... 1 mm <sup>2</sup> (TWIN ferrule with plastic sleeve)  |
| Conductor cross section AWG   | 20 ... 12 (solid)   |
|   | 20 ... 14 (flexible)  |
| Torque  | 0.5 Nm ... 0.6 Nm   |

### Connection data output side

|   |   |
|---|---|
| Connection name   | Contact side  |
| Connection method   | Screw connection  |
| Stripping length  | 7 mm  |
| Conductor cross section solid   | 0.5 mm <sup>2</sup> ... 4 mm <sup>2</sup>                                     |
| Conductor cross-section solid (2 conductors with same cross section)    | 0.5 mm <sup>2</sup> ... 1.5 mm <sup>2</sup>                                   |
| Conductor cross section flexible  | 0.5 mm <sup>2</sup> ... 2.5 mm <sup>2</sup>                                   |
|   | 0.5 mm <sup>2</sup> ... 2.5 mm <sup>2</sup> (Ferrules without plastic sleeve) |
|   | 0.5 mm <sup>2</sup> ... 1.5 mm <sup>2</sup> (Ferrule with plastic sleeve)     |
| Conductor cross section flexible (2 conductors with same cross section) | 0.5 mm <sup>2</sup> ... 1.5 mm <sup>2</sup>                                   |
|   | 0.5 mm <sup>2</sup> ... 1 mm <sup>2</sup> (TWIN ferrule with plastic sleeve)  |
| Conductor cross section AWG   | 20 ... 12 (solid)   |
|   | 20 ... 14 (flexible)  |
| Torque  | 0.5 Nm ... 0.6 Nm   |

### General

|                       |                           |
|-----------------------|---------------------------|
| Operating mode        | 100% operating factor     |
| Degree of protection  | IP20                      |
| Mounting position     | any                       |
| Assembly instructions | In rows with zero spacing |

### Standards and Regulations

|  |  |
|--|--|
| Designation                            | Air clearances and creepage distances between the power circuits |
| Standards/regulations                  | DIN EN 50178   |
| Rated insulation voltage               | 260 V AC   |
| Rated surge voltage                    | 4 kV   |
| Insulation                             | Basic insulation   |
| Degree of pollution                    | 2  |
| Overvoltage category                   | III  |
| Flammability rating according to UL 94 | V2   |

### Environmental Product Compliance

|            |                |
|------------|----------------|
| REACH SVHC | Lead 7439-92-1 |
|------------|----------------|

# Solid-state relay module - RIF-0-OSC-24DC/230AC/1 - 2905656

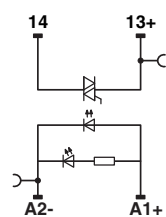
## Technical data

### Environmental Product Compliance

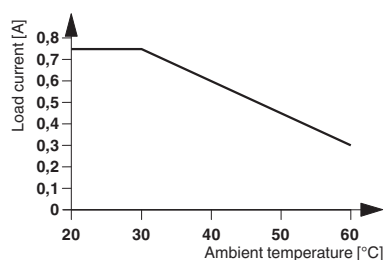
|            |   |
|------------|---|
| China RoHS | Environmentally Friendly Use Period = 50  |
|            | For details about hazardous substances go to tab "Downloads", Category "Manufacturer's declaration" |

## Drawings

Circuit diagram



Diagram



## Articles in set

Miniature solid-state relay - OPT-24DC/230AC/ 1 - 2967950



Plug-in miniature solid-state relay, power solid-state relay, 1 N/O contact, input: 24 V DC, output: 24 - 253 V AC/0.75 A

Relay base - RIF-0-BSC/ 1 - 2901872



RIF-0... relay base, for miniature power relay with 1 N/O contact or identical solid-state relays, screw connection, for mounting on NS 35/7,5

## Approvals

Approvals

Approvals

DNV GL / EAC

Ex Approvals

## Solid-state relay module - RIF-0-OSC-24DC/230AC/1 - 2905656

### Approvals

#### Approval details

|        |   |            |
|--------|---|------------|
| DNV GL | <a href="http://exchange.dnv.com/tari/">http://exchange.dnv.com/tari/</a> | TAA000018V |
|--------|---|------------|

|     |   |                          |
|-----|---|--------------------------|
| EAC |  | RU C-<br>DE.A*30.B.01082 |
|-----|---|--------------------------|

Phoenix Contact 2018 © - all rights reserved  
<http://www.phoenixcontact.com>

PHOENIX CONTACT GmbH & Co. KG  
Flachsmarktstr. 8  
32825 Blomberg  
Germany  
Tel. +49 5235 300  
Fax +49 5235 3 41200  
<http://www.phoenixcontact.com>