

MUR2505(R)
thru
MUR2560(R)

Features SUPER FAST RECOVERY DIODES STUD TYPE 25A

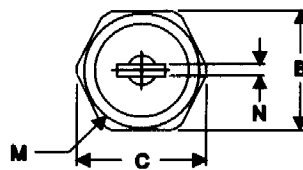
High Surge Capability
Types Up to 600V V_{RRM}

25Amp Rectifier
50-600 Volts

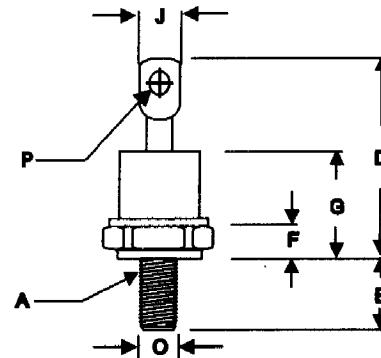
DO-4

Maximum Ratings

Operating Temperature: -65 °C to +175 °C
Storage Temperature: -65 °C to +175 °C



Part Number	Maximum Recurrent Peak Reverse Voltage	Maximum RMS Voltage	Maximum DC Blocking Voltage
MUR2505(R)	50V	35V	50V
MUR2510(R)	100V	70V	100V
MUR2520(R)	200V	140V	200V
MUR2540(R)	400V	280V	400V
MUR2560(R)	600V	420V	600V



Electrical Characteristics @ 25 °C Unless Otherwise Specified

Average Forward Current	$I_{F(AV)}$	25 A	$T_C = 145\text{ }^\circ\text{C}$
Peak Forward Surge Current	I_{FSM}	500A	8.3ms, half sine
Maximum Instantaneous Forward Voltage*	V_F	1.00V 1.30V 1.70V	$I_{FM} = 25A;$ $T_J = 25\text{ }^\circ\text{C}$
Maximum Instantaneous Reverse Current At Rated DC Blocking	I_R	10 μA 3.0 mA	$T_J = 25\text{ }^\circ\text{C}$ $T_J = 125\text{ }^\circ\text{C}$
Maximum Reverse Recovery Time	t_{rr}	75 ns 90 ns	$I_F=0.5A, I_R=1.0A,$ $I_{RR}=0.25A$
Mounting torque	Kgf-cm	11.0~13.4	Not lubricated threads

Notes:

- Standard Polarity: Stud is Cathode
- Reverse Polarity: Stud is Anode

DIM	DIMENSIONS				NOTE
	INCHES		MM		
A	10-32	UNF3A	Threads	Standard	Polarity
B	.424	.437	10.77	11.10	
C	—	.505	—	12.82	
D	.600	.820	15.24	20.82	
E	.422	.453	10.72	11.50	
F	.075	.175	1.91	4.44	
G	—	.405	—	10.29	
J	—	.310	—	7.87	
M	—	.413	—	10.49	\varnothing
N	.020	.065	0.51	1.65	
O	.019	Typ.	4.83	Typ.	\varnothing
P	.060	.100	1.53	2.54	\varnothing

*Pulse Test: Pulse Width 300 usec, Duty Cycle 2%