



TAI-SAW TECHNOLOGY CO., LTD.

No. 3, Industrial 2nd Rd., Ping-Chen Industrial District,
Taoyuan, 324, Taiwan, R.O.C.

TEL: 886-3-4690038 FAX: 886-3-4697532

E-mail: tstsales@mail.taisaw.com Web: www.taisaw.com

Product Specifications Approval Sheet

Product Name: SAW Filter 427.5 MHz BW 5MHz SMD 3.0X3.0 mm

TST Parts No.: TA2300A

Customer Parts No.: _____

| |
|---------------------|
| Company: _____ |
| Division: _____ |
| Approved by : _____ |
| Date: _____ |

Checked by: _____ V.J Fanchian *VJ Fanchian*

Approval by: _____ Andy Yu *Andy Yu*

Date: _____ 09/15/2017

1. Customer signed back is required before TST can proceed with sample build and receive orders.
2. Orders received without customer signed back will be regarded as agreement on the specifications.
3. Any specifications changes must be approved upon by both parties and a new revision of specifications shall be released to reflect the changes



TAI-SAW TECHNOLOGY CO., LTD.

No. 3, Industrial 2nd Rd., Ping-Chen Industrial District,
Taoyuan, 324, Taiwan, R.O.C.

TEL: 886-3-4690038 FAX: 886-3-4697532

E-mail: tstsales@mail.taisaw.com Web: www.taisaw.com

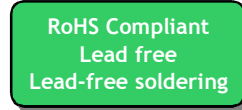
SAW Filter 427.5 MHz BW 5MHz SMD 3.0X3.0 mm

MODEL NO.: TA2300A

REV. NO.:1.0

A. MAXIMUM RATING:

1. Input Power Level: 20 dBm
2. DC Voltage : 3V
3. Operating Temperature: -40°C to +85°C
4. Storage Temperature: -40°C to +85°C
5. Moisture Sensitivity Level: Level 1(MSL1)

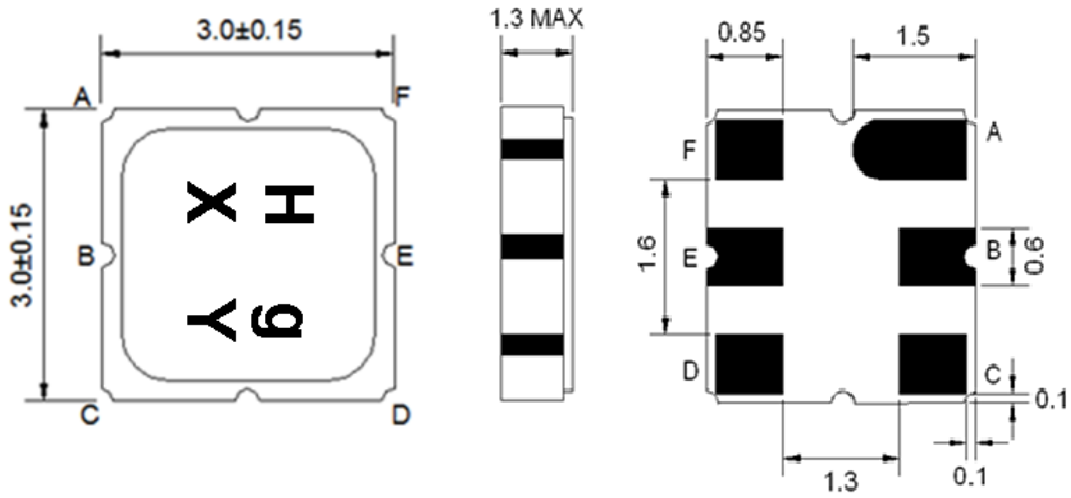


Electrostatic Sensitive Device (ESD)

B. ELECTRICAL CHARACTERISTICS:

| Item | Unit | Min. | Type. | Max. | Note |
|---|------|--------------------|-------|------|------|
| Center frequency, Fc | MHz | - | 427.5 | - | |
| Insertion Loss(min) | dB | - | 1.0 | 1.5 | |
| Insertion Loss 425.00 - 430.00 MHz | dB | | 2.0 | 2.5 | |
| VSWR 425.00 - 430.00 MHz | - | - | 1.5 | 2.0 | |
| Amplitude Ripple (p-p) 425.00 - 430.00 MHz | dB | | 0.6 | 1.0 | |
| Group Delay 425.00 - 430.00 MHz | nS | | 50 | 120 | |
| Attenuation:(Reference level from 0 dB) | | | | | |
| DC - 410.00 MHz | dB | 25.0 | 30.0 | | |
| 435.00 - 440.00 MHz | dB | 35.0 | 40.0 | | |
| 447.00 - 480.00 MHz | dB | 30.0 | 32.0 | | |
| 480.00 - 1500.00 MHz | dB | 25.0 | 30.0 | | |
| Impedance at Fc:Input $Z_{IN} = R_{IN} // C_{IN}$ | | 50 Ω // 0pF | | | |
| Output $Z_{out} = R_{IN} // C_{IN}$ | | 50 Ω // 0pF | | | |

C.OUTLINE DRAWING:



| Pin Description | |
|-----------------|--------|
| A, C, D, F | Ground |
| E | In |
| B | Out |

| Marking Descriptions | |
|----------------------|---------------------|
| H | CDMA450 Application |
| g | Series Number |
| X | Date Code(Year) |
| Y | Date Code(Month) |

X : Year code

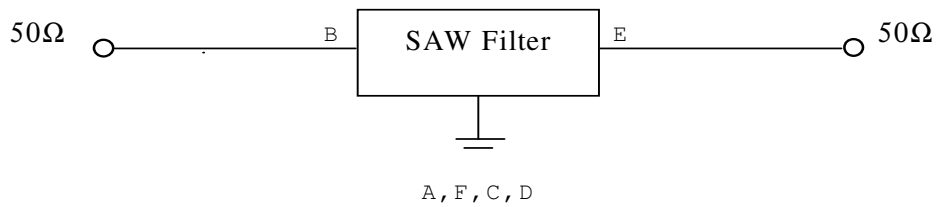
| X (Year) | 2014 | 2015 | 2016 | 2017 | 2018 | 2019 | 2020 | 2021 | 2022 | 2023 | 2024 | 2025 |
|-------------|------|------|------|------|------|------|------|------|------|------|------|------|
| | E | F | G | H | J | K | L | M | N | P | Q | R |

Y : Month code

| Y (Month) | JAN | FEB | MAR | APR | MAY | JUN | JUL | AUG | SEP | OCT | NOV | DEC |
|--------------|-----|-----|-----|-----|-----|-----|-----|-----|-----|-----|-----|-----|
| | 1 | 2 | 3 | 4 | 5 | 6 | 7 | 8 | 9 | A | B | C |

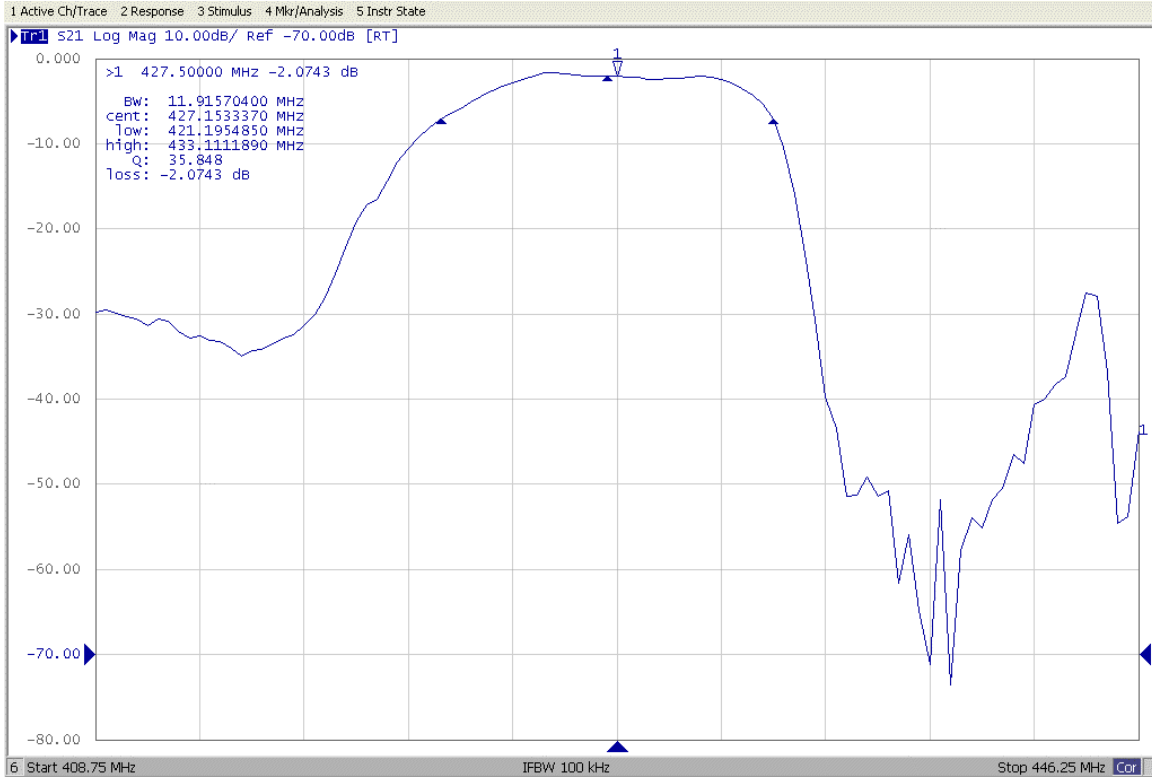
D. MEASUREMENT CIRCUIT:

HP Network analyzer

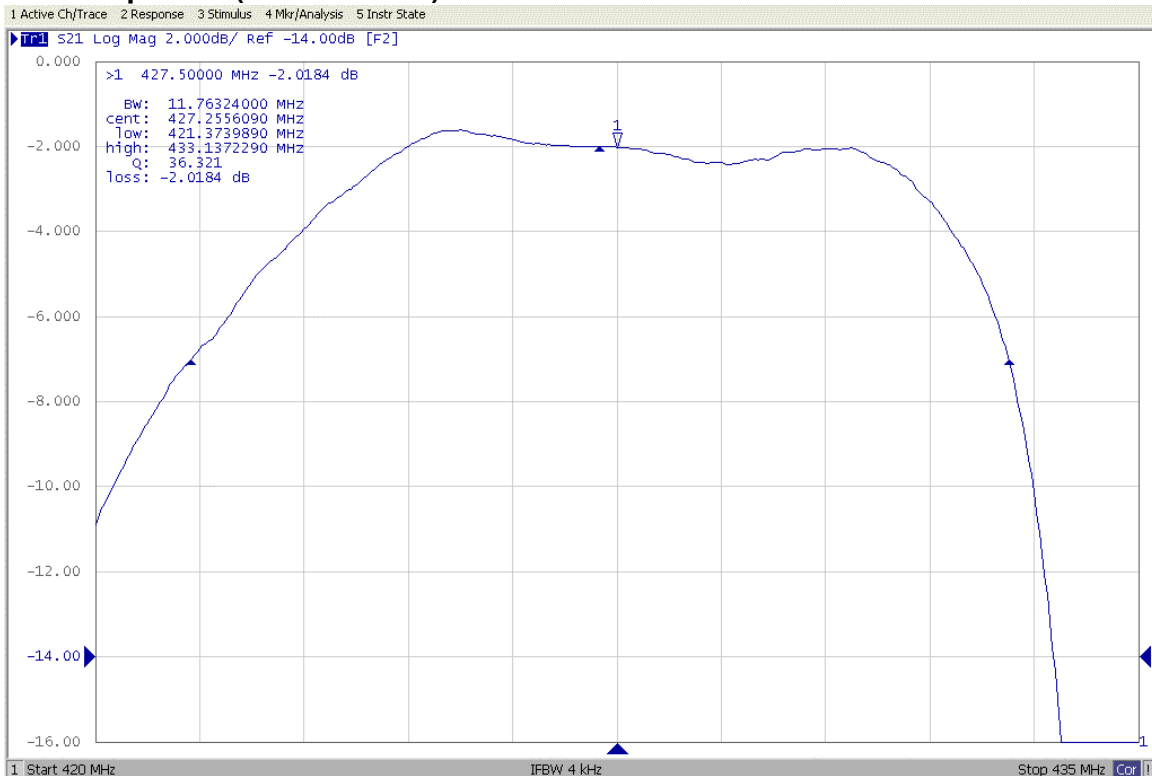


E. FREQUENCY CHARACTERISTICS:

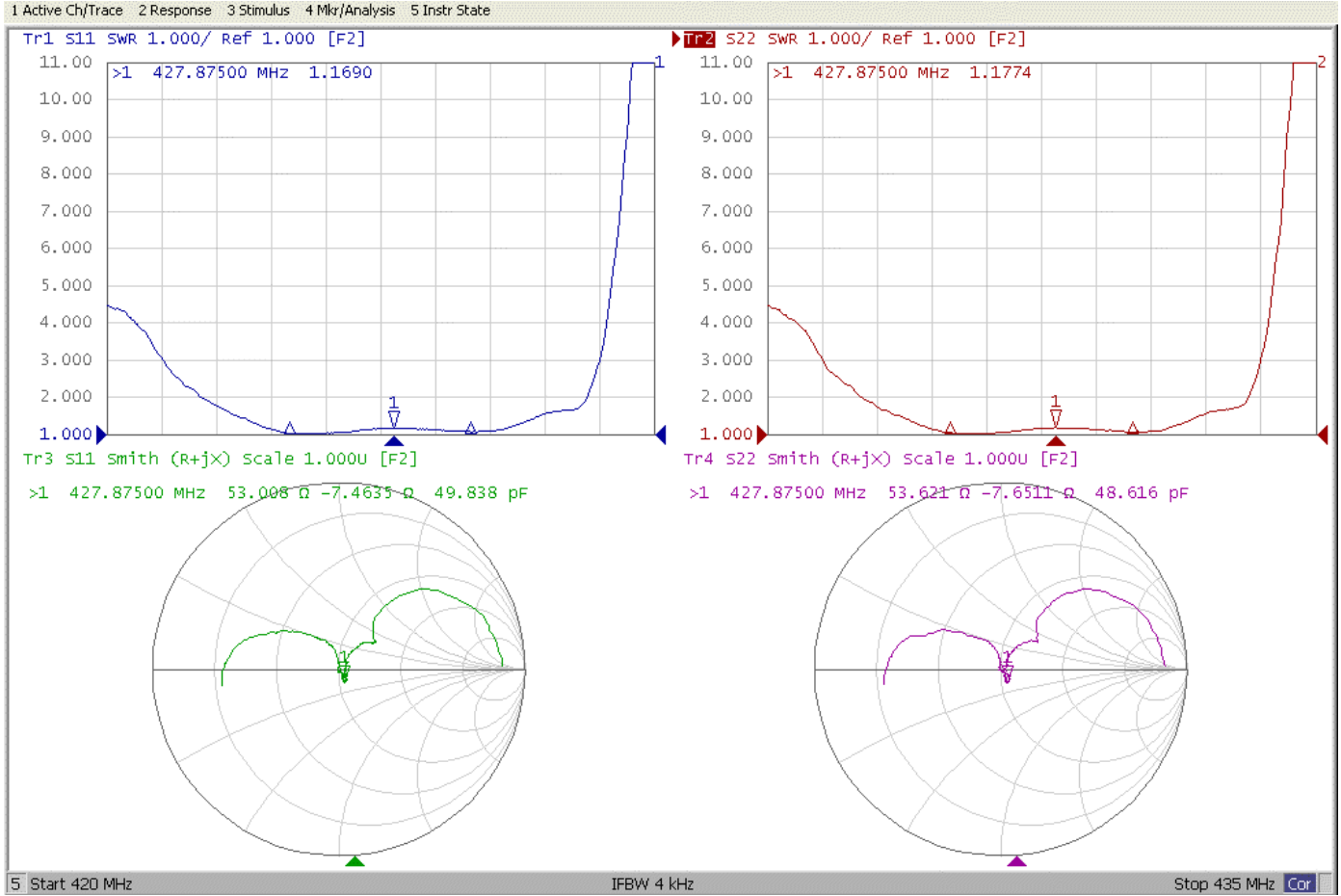
S21 response: (Wide Band)



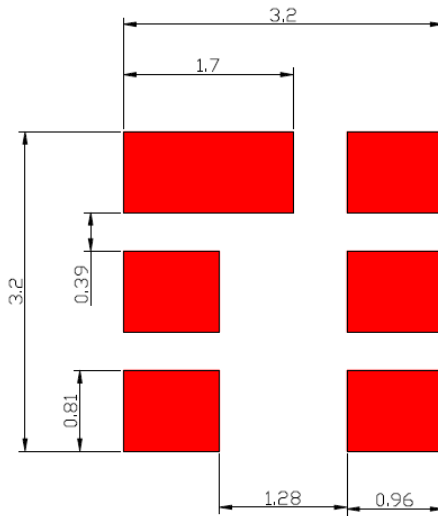
S21 response: (Narrow Band)



S11&S22 VSWR & Smith-Chart :



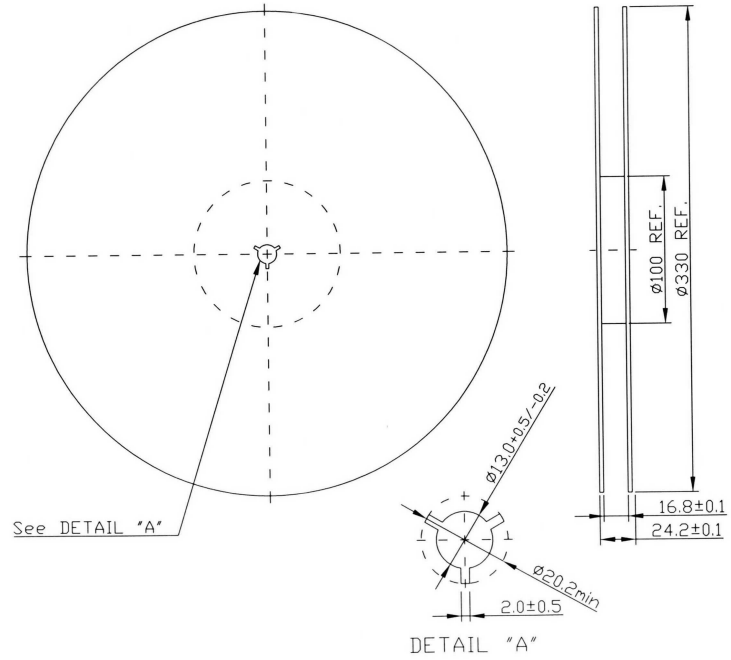
F. PCB FootPrint



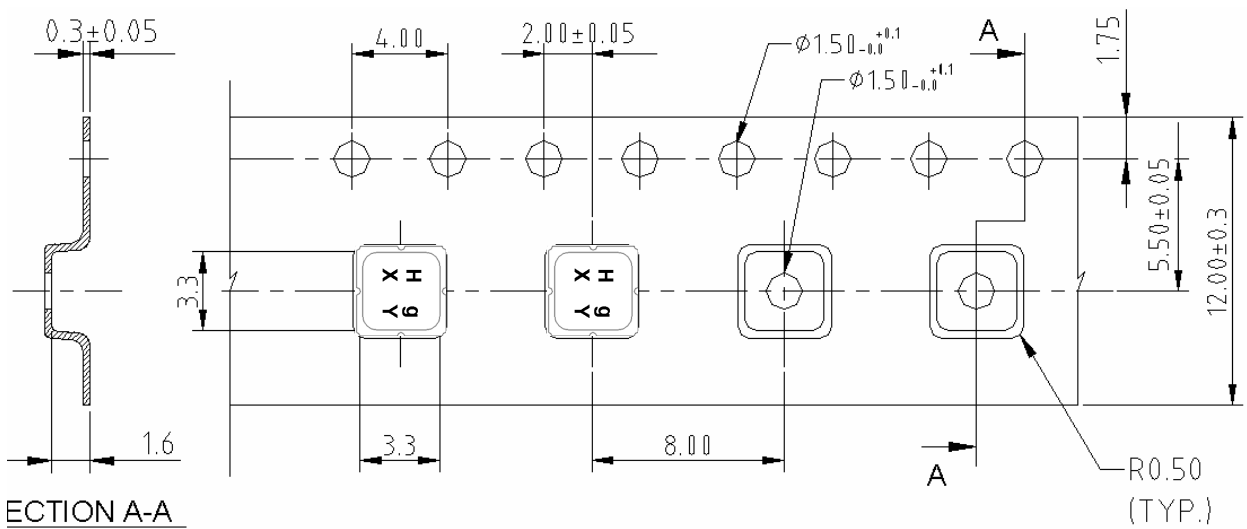
G. PACKING:

1. REEL DIMENSION

(Please refer to FR-75D10 for packing quantity)



2. TAPE DIMENSION



H. RECOMMENDED REFLOW PROFILE :

