

SAW Filter 279.880MHz
Part No: MP03531

Model: TB0786A
Rev No: 2

A. MAXIMUM RATING:

1. Operating Temperature: -30°C ~ +85°C
2. Storage Temperature: -40°C ~ +85°C
3. Input power: 10dBm

B. CHARACTERISTICS:

Ambient Temperature: 25°C

Item	Unit	Min.	Typ.	Max.
Center Frequency	MHz	-	279.88	-
Insertion Loss (Fc ± 3.5MHz)	dB	-	10.4	15
Passband Ripple (Fc ± 3.5 MHz)	dB	-	0.6	1.0
1dB BW	MHz	7	8.6	-
45dB BW	MHz	-	15.6	18
Attenuation 1 @ 10 ~ 270MHz	dB	40	43	-
Attenuation 2 @ 291 ~ 600MHz	dB	38	42	-

SAW Filter 279.880MHz
Part No: MP03531

Model: TB0786A
Rev No: 2

C. FREQUENCY CHARACTERISTICS:

1. S21 Response (span: 80MHz)

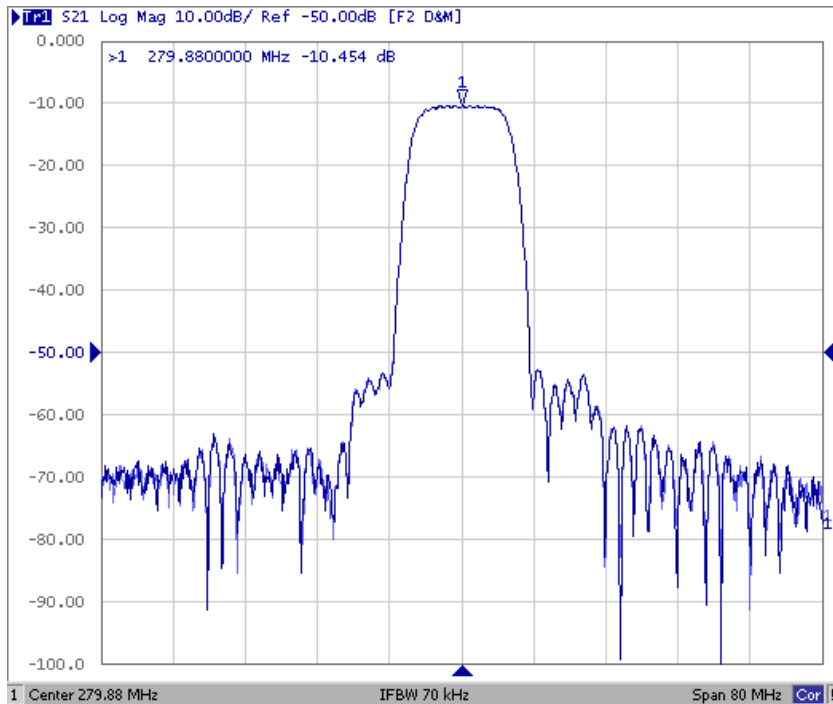


Fig. 1. Horizontal: 8MHz/Div, Vertical: 10dB/Div

2. Group-Delay Ripple (span: 15MHz)

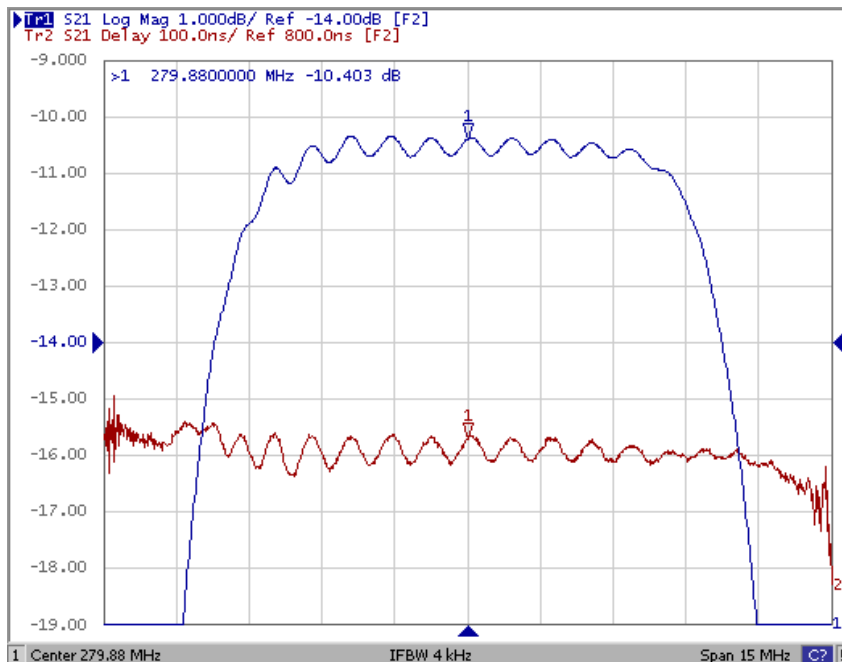
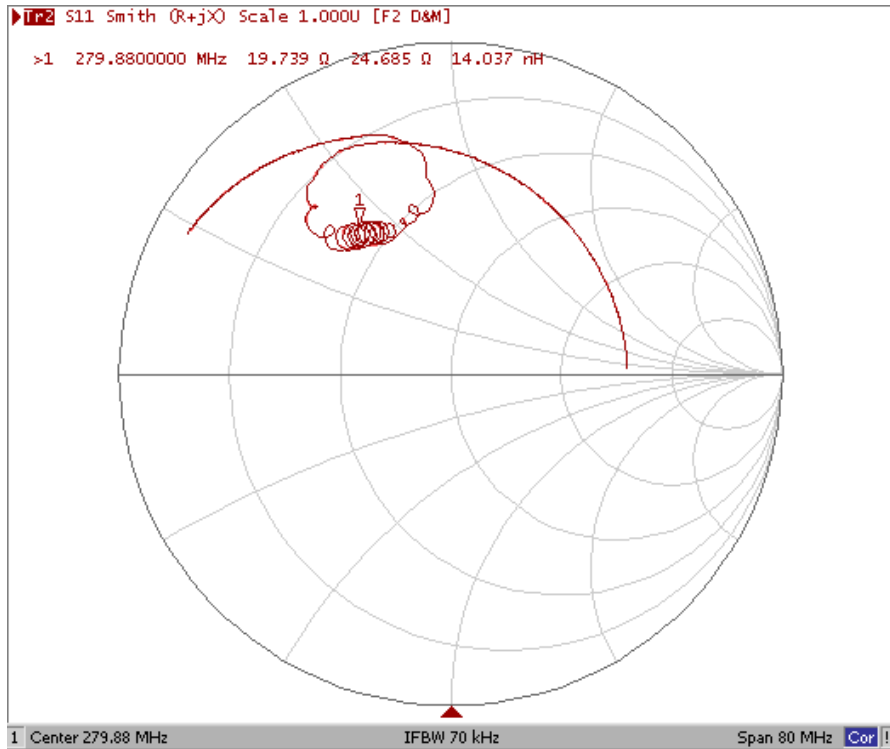


Fig. 2. Horizontal: 1.5MHz/Div, Vertical: 100nec/Div

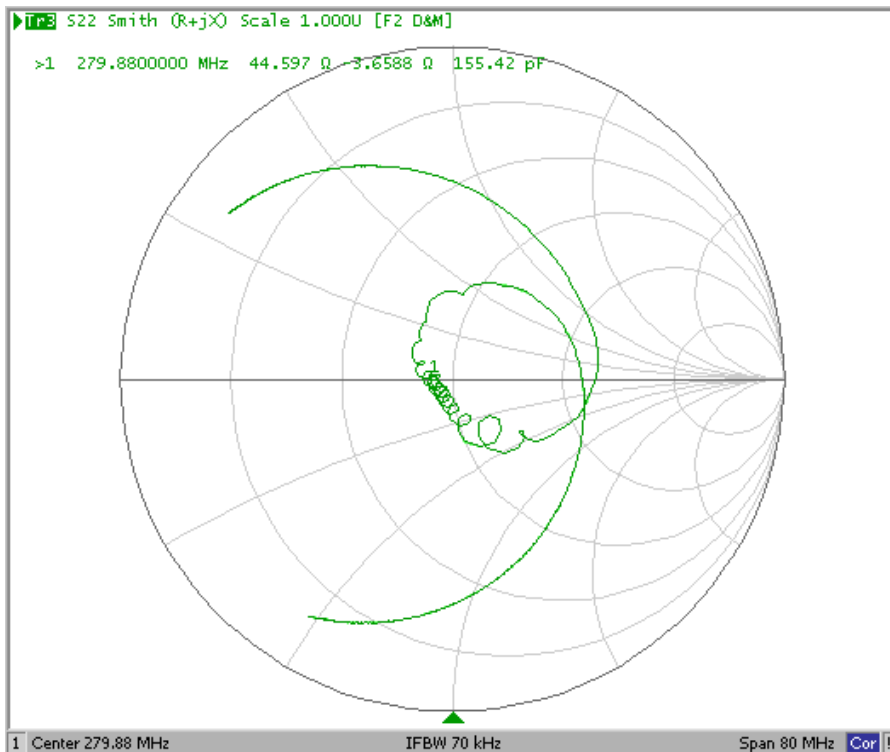
SAW Filter 279.880MHz
Part No: MP03531

Model: TB0786A
Rev No: 2

3. S11 Smith Chart (span: 80MHz)



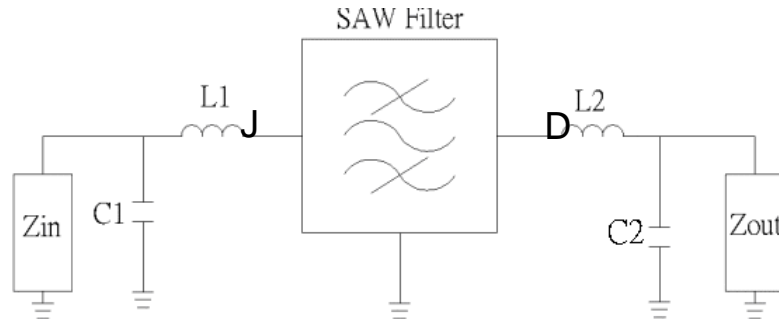
4. S22 Smith Chart (span: 80MHz)



SAW Filter 279.880MHz
Part No: MP03531

Model: TB0786A
Rev No: 2

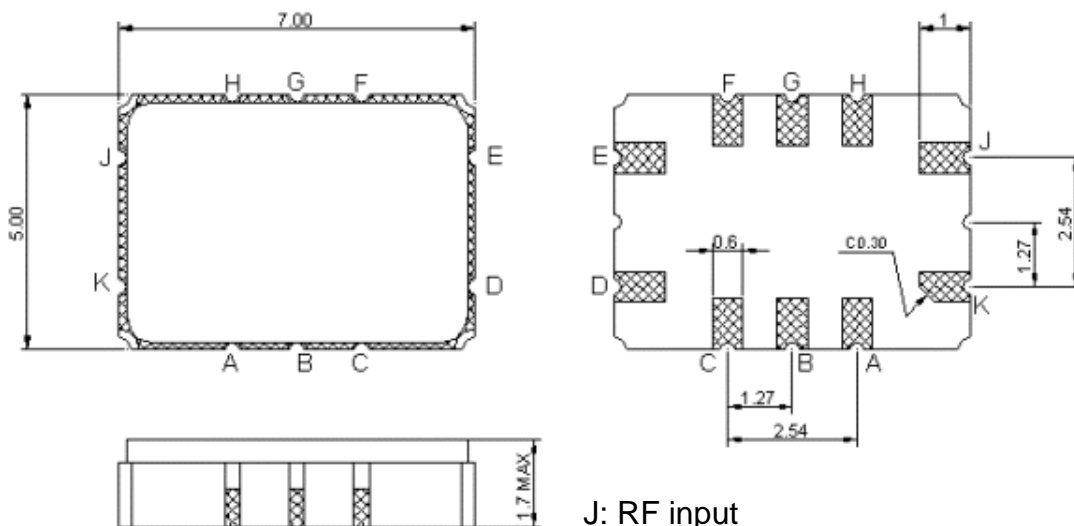
D. MEASUREMENT CIRCUIT:



Z_{in} and Z_{out} are $50\ \Omega$.

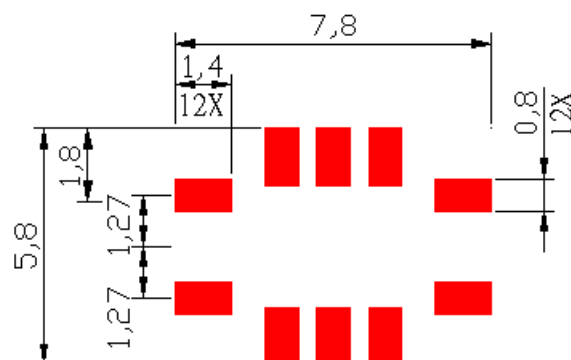
$L1=8.6\text{nH}, C1=22\text{pF}, L2=12\text{nH}, C2=30\text{pF}$

E. OUTLINE DRAWING:



J: RF input
 D: RF output
 K, E: Case Ground
 A, B, C, F, G, H: Ground
 Unit: mm

F. PCB FOOTPRINT:

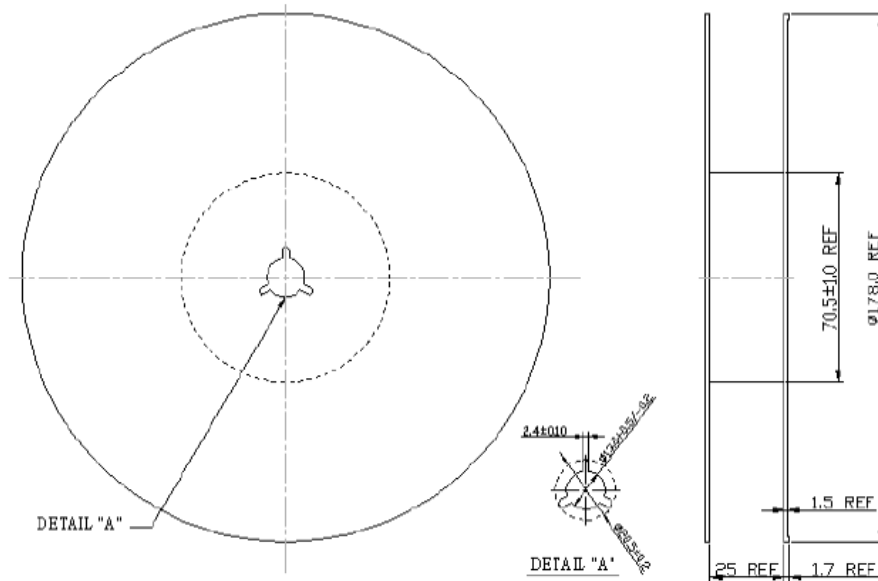


SAW Filter 279.880MHz
Part No: MP03531

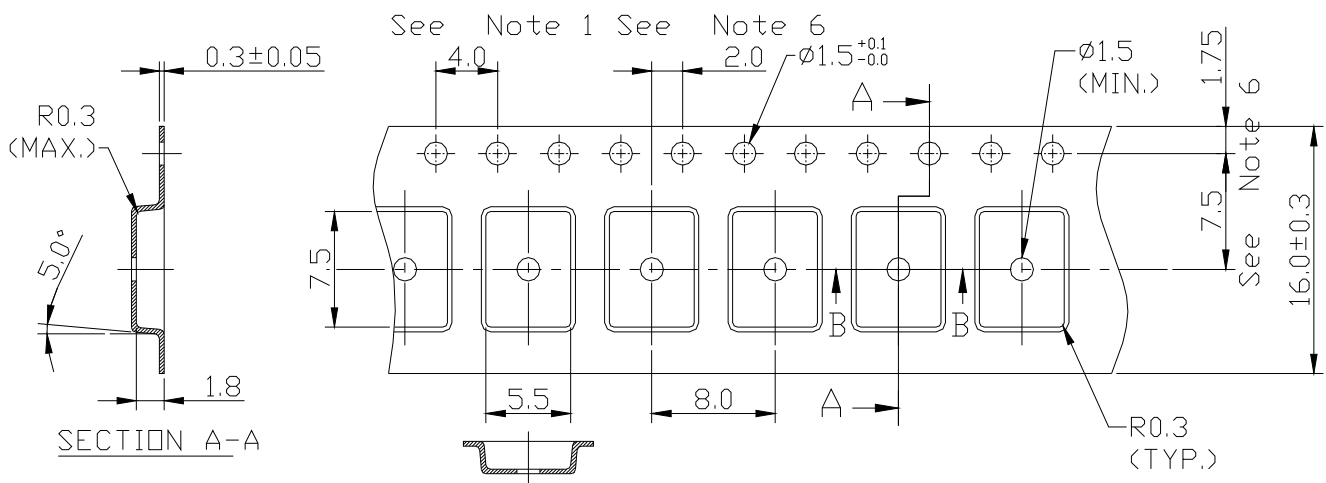
Model: TB0786A
Rev No: 2

G. PACKING:

1. REEL DIMENSION



2. TAPE DIMENSION



SAW Filter 279.880MHz
Part No: MP03531

Model: TB0786A
Rev No: 2

H. RECOMMENDED REFLOW PROFILE:

