

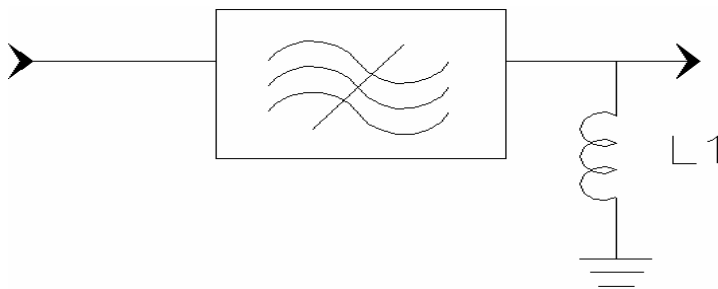
### Specifications

Parameter	Unit	Minimum	Typical	Maximum
Center Frequency	MHz	114.96	115	115.04
Insertion Loss	dB		18.5	19.5
2 dB Bandwidth	MHz	0.2	0.27	
45dB Bandwidth	MHz		0.75	0.8
50dB Bandwidth	MHz		0.77	1.2
Passband Variation	dB		0.3	0.5
Group Delay Variation ( $f_o \pm 0.1\text{MHz}$ )	nsec		200	300
Absolute Delay	usec		4.48	4.6
Ultimate Rejection (outside of $f_o \pm 0.6\text{MHz}$ )	dB	50	52	
Material temperature coefficient	KHz/°C	0.115		
Ambient Temperature	°C	25		
Package Size	DIP3616(36x16x5mm <sup>3</sup> )			

#### Notes:

1. All specifications are based on the test circuit shown
2. In production, devices will be tested at room temperature to a guardbanded specification to ensure electrical compliance over temperature
3. Electrical margin has been built into the design to account for the variations due to temperature drift and manufacturing tolerances
4. This is the optimum impedance in order to achieve the performance show

### Matching Configuration



**L1=68nH**

**Source/Load Impedance=50 ohm**

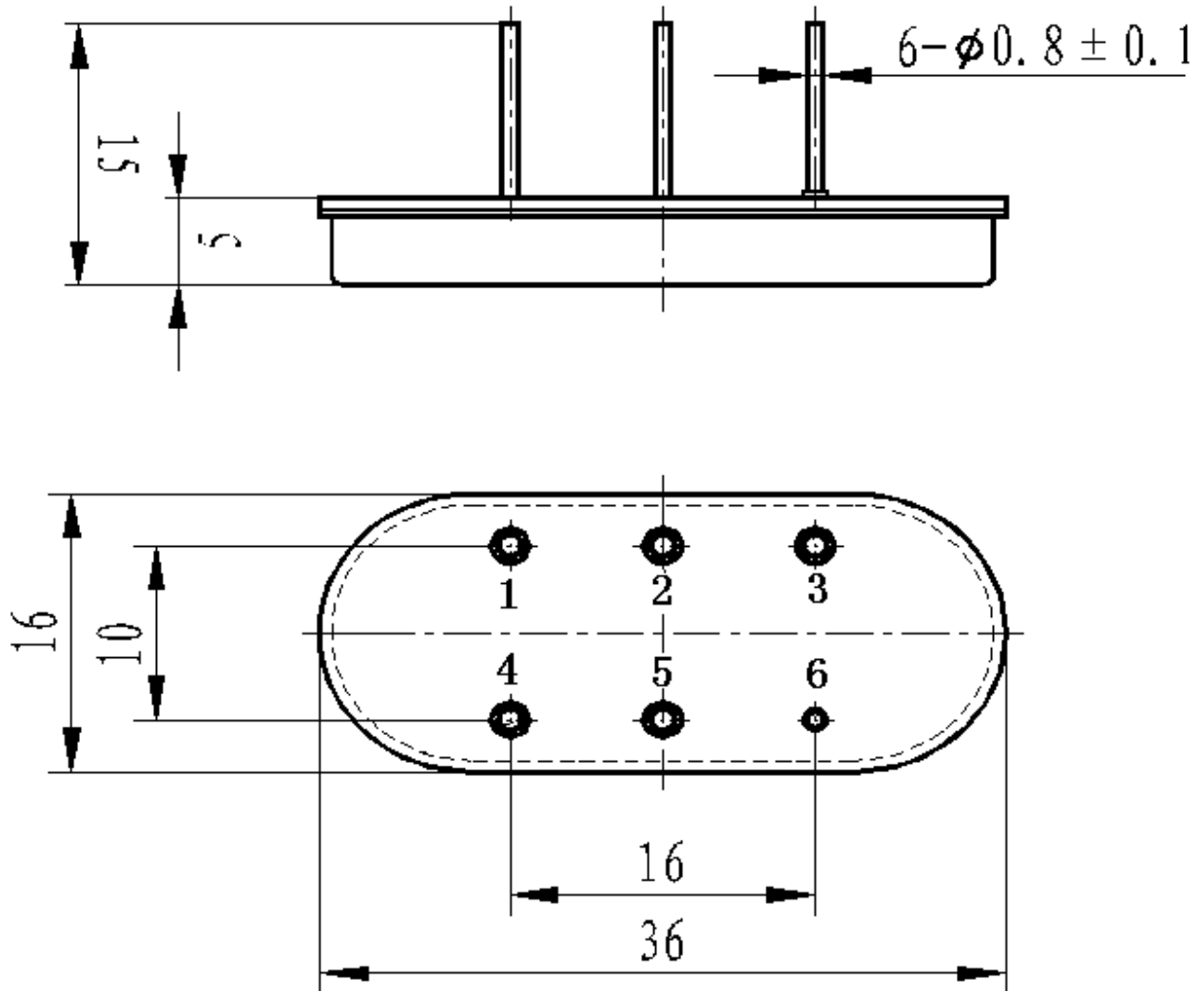
Notes - Component values may change depending on board layout.



**SIPAT Co., Ltd.**  
( CETC No. 26 Research Institute )  
Nanping Huayuan Road No. 14  
Chongqing, China, 400060

Part Number	LBS11540		
Rev. Date	2005-8-10		
Rev.	1.0	Page 1/3	

*Package Dimension*



**INPUT Pin:4**  
**OUTPUT Pin:3**

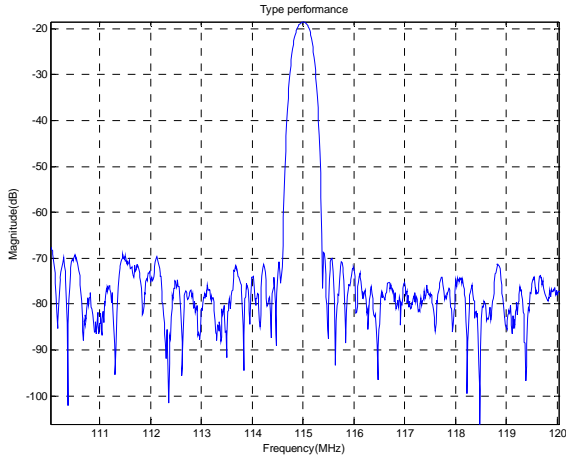


**SIPAT Co., Ltd.**  
( CETC No. 26 Research Institute )  
Nanping Huayuan Road No. 14  
Chongqing, China, 400060

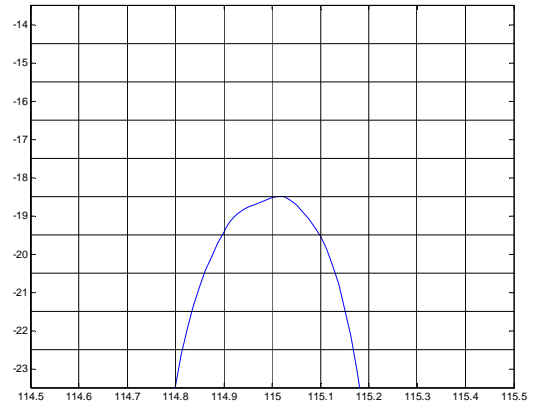
Part Number	LBS11540	
Rev. Date	2005-8-10	
Rev.	1.0	Page 2/3

Typical Performance

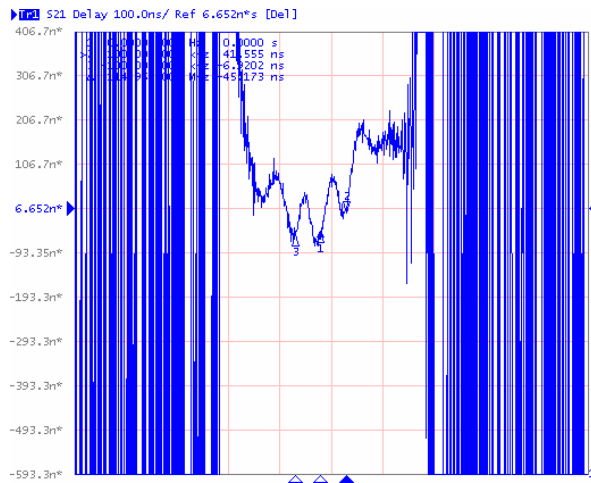
Frequency Respond



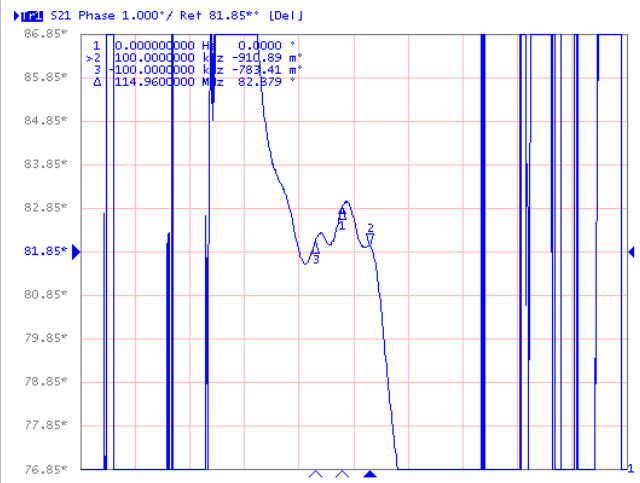
Passband Respond



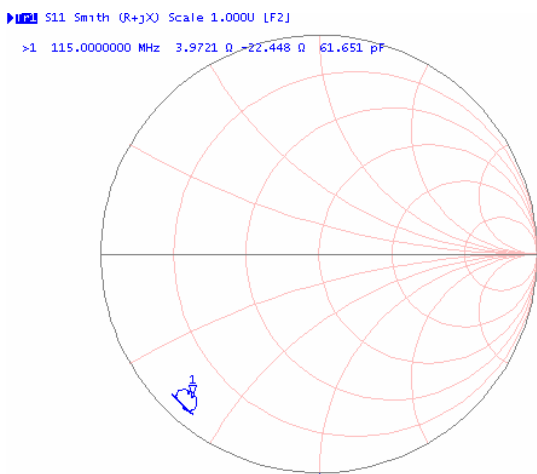
Group Delay Variation( $f_0 \pm 4.4$  MHz)



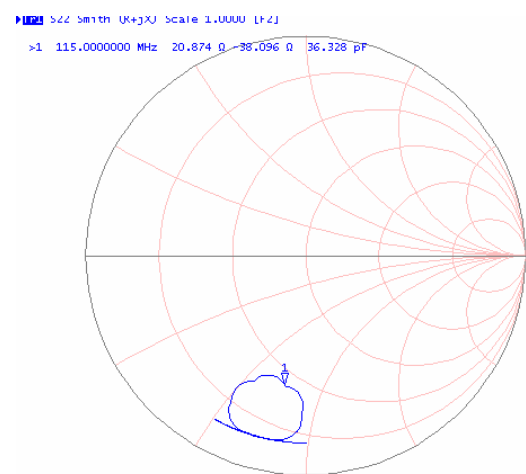
Phase Linearity( $f_0 \pm 4.4$  MHz)



Smith Chart S11



Smith Chart S22



**SIPAT Co., Ltd.**  
( CETC No. 26 Research Institute )  
Nanping Huayuan Road No. 14  
Chongqing, China, 400060

Part Number LBS11540

Rev. Date 2005-8-10

Rev. 1.0

Page 3/3