

FEATURES :

- 3PIN SIP Package
- Pin-out compatible with LM78XX Linear
- Efficiency up to 96%,Non isolated, no need for heatsink
- Customized Solutions Available
- UL94V-0 Package Material
- Operating Temperature:-40°C TO +82°C
- 3 Years Warranty
- Short circuit protection
- Wide Input Voltage Ranges 4.75~36VDC

Specifications typical at TA=25°C, nominal input voltage and rated output current unless otherwise specified

Part Number	Input Range	Output Voltage	Output Current	Efficiency	
	Vdc	Vdc	mA	Min.Vin(%)	Max.Vin(%)
01D-1R8-2A	4.75-36	1.8	2000	89	80
01D-2R5-2A	4.75-36	2.5	2000	90	82
01D-3R3-2A	4.75-36	3.3	2000	90	84
01D-05-2A	6.5-36	5.0	2000	93	89
01D-6R5-2A	9.0-36	6.5	2000	93	91
01D-09-2A	12-36	9.0	2000	94	90
01D-12-2A	15-36	12	2000	95	93
01D-15-2A	18-36	15	2000	96	94

Input Specifications

Parameters	Conditions	Min	Typ	Max	Units
Input Voltage Range	See table	4.75	24	36	V
Internal Input Filter	Capacitors		10		uF
No Load Input Current	Vin=24V		15	20	mA

Output Specifications

Parameters	Conditions	Min	Typ	Max	Units
Voltage Tolerance				±3	%
Short Circuit Protection	Hiccup, automatic recovery				
Line Regulation	Vin=min to max at full load		±0.5		%
Load Regulation	10% To 100% F.L		±0.5		%
Current Limit	Duty=40%		325		%
Ripple & Noise (without Output Capacitor)	100% F.L BW=20MHz			100	mVp-p
Transient response setting time	25% load step change		350		us
Capacitive load	ESR > 1mohm			900	uF

YUAN DEAN SCIENTIFIC



DC-DC Converter

01D-2A SERIES

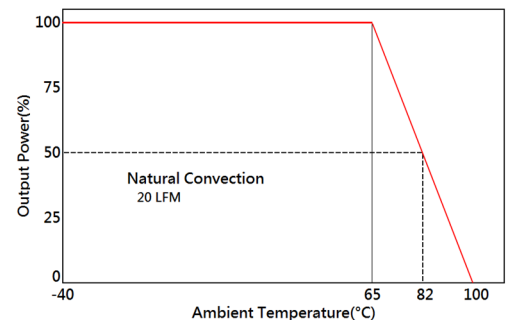
Non-Isolated

Single Output

0.45"*0.3"*0.68"



Temperature Derating Graph



www.yds.com.tw



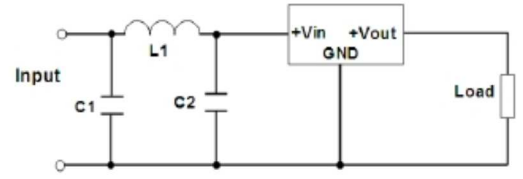
TEL : 886-6-3842899 FAX : 886-6-3843288
E-MAIL : ydsweb@yds.com.tw

Rev:0 2018/10/31

General Specifications

Parameters	Conditions	Min	Typ	Max	Units
Switching Frequency			500		KHz
Operating Temperature	With derating	-40		82	°C
Storage Temperature		-55		125	°C
Humidity	Non Condensing			95	%
Cooling	Natural Convection (20LFM)				
Case material	Non-Conductive Black Plastic				
Weight			4.0		g
Dimensions			11.5x8.5x17.5		mm
MTBF(+25°C)	using MIL-HDBK 217F		1630 x10 ³		hours

Application Examples



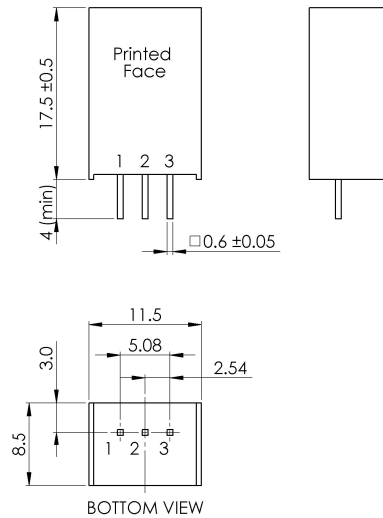
C1,C2=220uF/50V , ESR<0.1 ohm, L1=1uH

Part Number

01D - 05 - 2A
A B C

- A: Series
- B: Output Voltage
- C: Output Current

Dimensions



Unit : mm
Tolerance : XX.X ±0.5 , XX.XX ±0.25

PIN Assignment

PIN	1	2	3
Function	+Vin	GND	+Vout

